



1 Park Road

Kennington Ashford, TN24 9DL

Offers In Excess Of £620,000

A spacious detached home of around 1850 sqft with flexibly arranged accommodation.

Sitting in the very popular Park Road in Kennington, this delightful property offers a large kitchen/breakfast room with integrated appliances, sitting room, study, three bedrooms, en suite and family bathroom. In addition, the dining and dressing rooms could double as bedrooms should the need arise.

The generous, well stocked rear garden enjoys a sunny aspect with a large garden room with wifi and heating whilst to the front of the property a block paved driveway provides ample off road parking.

Bus routes, convenient co-op store and local schools are all within easy reach.

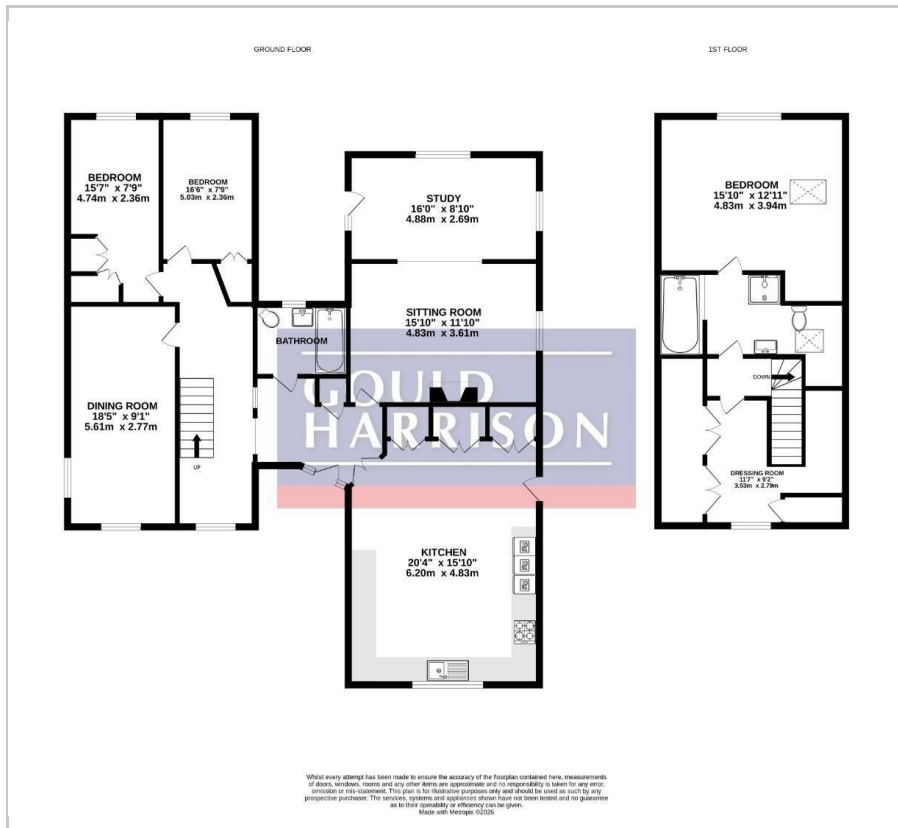
Viewing

Please contact our Ashford Office on 01233 646411 if you wish to arrange a viewing appointment for this property or require further information.

- IMPRESSIVE DETACHED HOME
- FLEXIBLY ARRANGED ACCOMMODATION
- SPACIOUS KITCHEN/BREAKFAST ROOM
- THREE BEDROOMS
- DINING ROOM/BEDROOM
- EN SUITE & DRESSING ROOM/FURTHER BEDROOM POTENTIAL
- STUDY
- GENEROUS REAR GARDEN WITH SUNNY ASPECT
- GARDEN ROOM WITH HEATING & WIFI
- POPULAR RESIDENTIAL LOCATION CLOSE TO AMENITIES



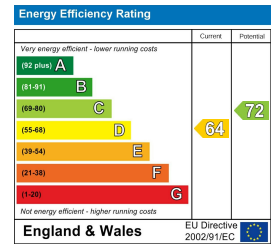
Floor Plan



Area Map



Energy Efficiency Graph



These particulars, whilst believed to be accurate are set out as a general outline only for guidance and do not constitute any part of an offer or contract. Intending purchasers should not rely on them as statements of representation of fact, but must satisfy themselves by inspection or otherwise as to their accuracy. No person in this firm's employment has the authority to make or give any representation or warranty in respect of the property.