



3 Robus Close, Lyminge - CT18 8JF

Guide Price **£385,000**

Approximate Gross Internal Area = 88 sq m / 944 sq ft

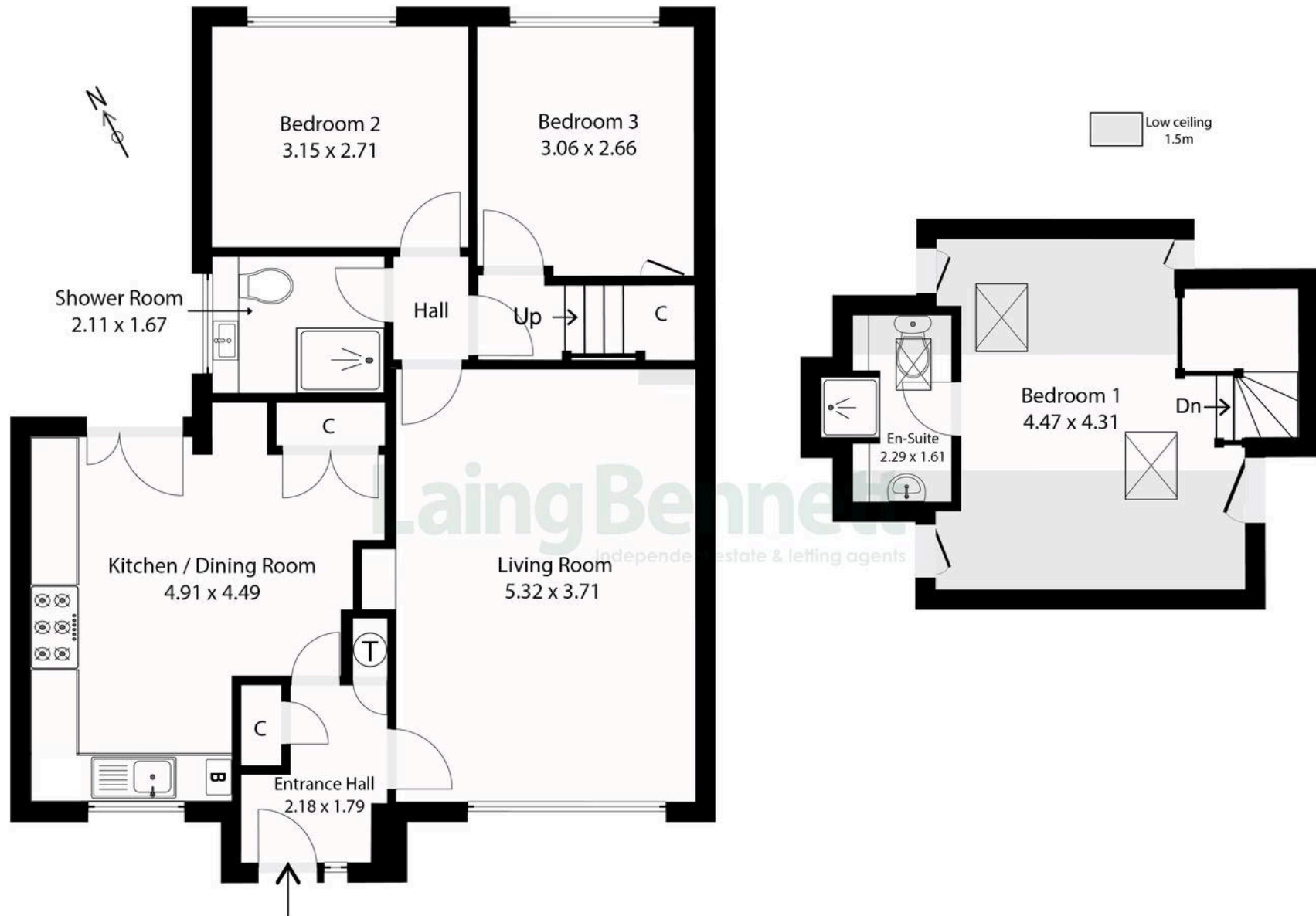


Illustration for Identification purposes only. Measurements are approximate. Dimensions given are between the widest points.

Not to scale. Outbuildings are not shown in actual location.

© Unauthorised reproduction prohibited - chriskemps@hotmail.com



3 Robus Close

Lyminge, Folkestone

Welcome to this beautifully presented three bedroom semi detached chalet bungalow. Located in a small cul de sac in the ever popular village of Lyminge. A delightful well enclosed easy to maintain garden and driveway parking. Accommodation Comprises: Ground floor - Good size entrance hall with airing cupboard and built in storage cupboard housing the water softener, delightful sitting room with large picture window to the front aspect flooding the room with natural sunlight, inner hallway, spacious kitchen/dining room being well fitted out and with plenty of room for table and chairs, bedroom two, bedroom three and newly installed bathroom. First floor: Bedroom one: With two large Velux windows to the front and rear, eaves storage. Door to: en suite shower room/WC with Velux window. Outside: Attractive front garden laid to lawn with attractive border beds. The rear garden is laid to artificial grass and has a sun terrace being ideal for outside entertaining.

Council Tax band: D

Tenure: Freehold

EPC Energy Efficiency Rating: C

EPC Environmental Impact Rating:





Laing Bennett

Laing Bennett Ltd, The Estate Office, 8 Station Road – CT18 8HP

01303 863393

info@laingbennett.co.uk

www.laingbennett.co.uk/

DISCLAIMER – These details are for guidance only and do not form part of an offer or contract. Measurements are approximate. Laing Bennett Ltd and the Vendor/Landlord accept no liability. Services and appliances are untested. Applicants must make their own checks. Items shown may not be included. No staff have authority to give warranties.