



# Sheffield Road, Stonegravels, Chesterfield, Derbyshire S41 7LT

0

0

0

EPC

£225,000

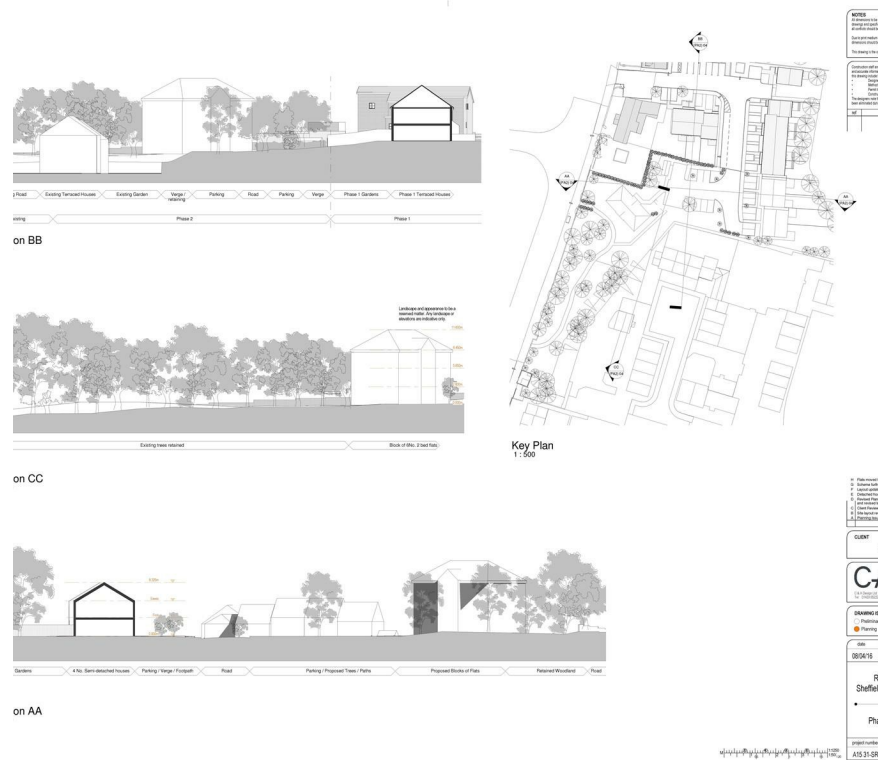
PINEWOOD

# Sheffield Road Stonegravels Chesterfield Derbyshire S41 7LT

**£225,000**

**0 bedrooms  
0 bathrooms  
0 receptions**

- DEVELOPMENT OPPORTUNITY
- PLANNING PERMISSION



#### LAND DEVELOPMENT OPPORTUNITY

Pinewood Property Estates are pleased to offer an excellent development opportunity for acquisition. The site benefits from outline planning consent for a scheme comprising six two-bedroom apartments and four three-bedroom semi-detached houses.

Situated on Sheffield Road in the popular Stonegravels area, the site is within easy walking distance of Chesterfield town centre and conveniently located close to a range of local amenities.

Interested parties are advised to review the full planning details via the Chesterfield Planning Portal under reference CHE/17/00722/OUT.

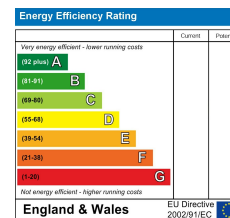
For further information or to submit an offer, please contact Pinewood Property Estates.

Mansfield branch  
24 Albert Street  
Mansfield, NG1  
01623 621001

Clowne branch  
26 Mill Street,  
Clowne, S43 4JN  
01246 810519

Clay Cross branch  
20 Market Street,  
Clay Cross, S45 9JE  
01246 251194

Chesterfield branch  
33 Holywell Street,  
Chesterfield, S41 7SA  
01246 221039



PINEWOOD

