



Price

£375,000

Freehold

3x  2x  1x 

**Alverstone Road, Apse
Heath, Sandown, Isle of
Wight, PO36**

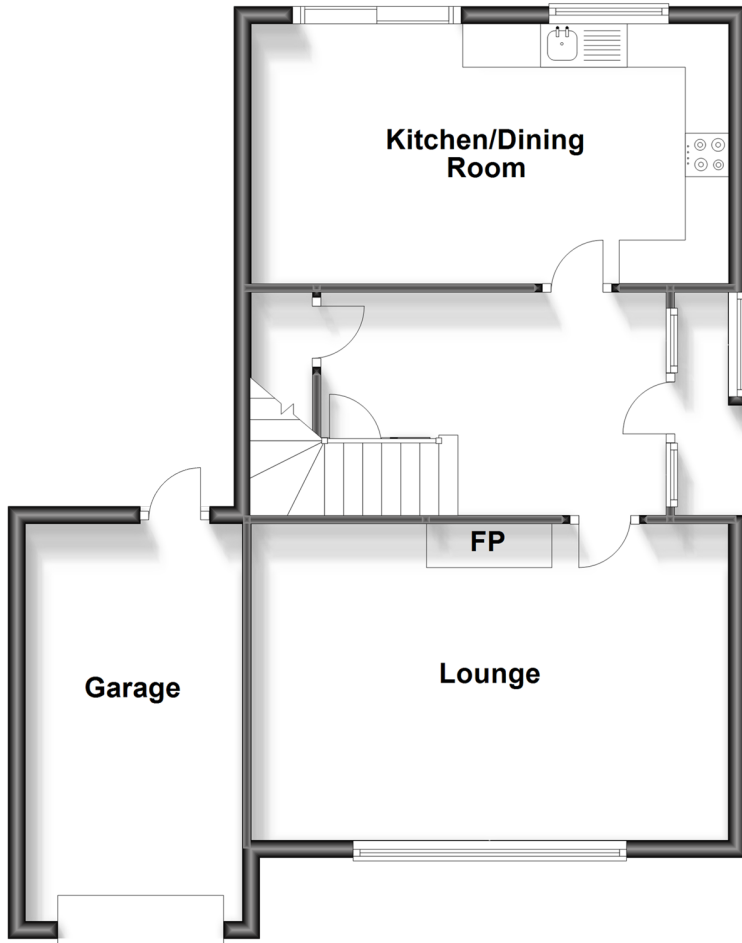
OVER 60?

Secure this property
for up to **59% less!**

Pittis 
Helping you move forwards

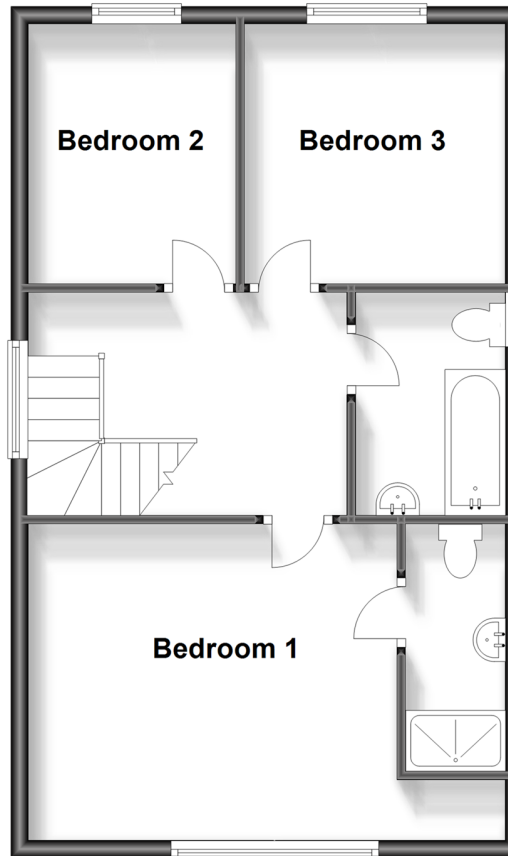
Ground Floor

Approx. 61.7 sq. metres (664.3 sq. feet)



First Floor

Approx. 51.9 sq. metres (558.4 sq. feet)



Accommodation

GROUND FLOOR

Entrance Hall

Hallway

Lounge: 18'11 x 11'9 (5.77m x 3.58m)

Kitchen/Dining Room: 18'1 x 9'8 (5.52m x 2.95m)

FIRST FLOOR

Bedroom 1: 14'0 x 11'9 (4.27m x 3.58m)

En-Suite Shower Room

Bathroom

Bedroom 3: 9'9 x 9'8 (2.97m x 2.95m)

Bedroom 2: 9'8 x 7'8 (2.95m x 2.34m)

OUTSIDE

Driveway

Garage

Rear Garden



Main features

- Detached house in a popular location
- Well presented throughout
- Garage and large driveway with parking for multiple cars
- Large garden to the rear and beautiful countryside views and surroundings
- Perfect for dog walks nearby and also located close to schools, local supermarkets and transport links



Nearest Schools

Primary Schools:
Lake Middle School
Sandham Middle School
Ventnor Middle School



Transport Information

Local buses providing Islandwide connections.



Address

Alverstone Road, Apse Heath, Sandown, Isle of Wight, PO36



Directions

For directions to this property please contact us.

