



PCM

**£900 PCM**

**Pelter Street**

London, E2 7PF

Large - DOUBLE ROOM - set just off Columbia Road in Shoreditch.

Fully furnished room, council tax is an extra £45 per month however other additional bills are included.

Recently decorated, with new modern fitted kitchen, stylish bathroom suite with separate shower.

Transport links include, Liverpool Street, Shoreditch High-Street, Old Street tube stations close by.

1st floor of a split level apartment shared with another 2 sharers.

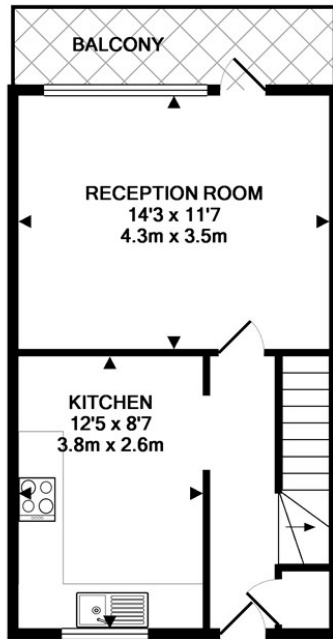
Available June.

No couples only single occupants.

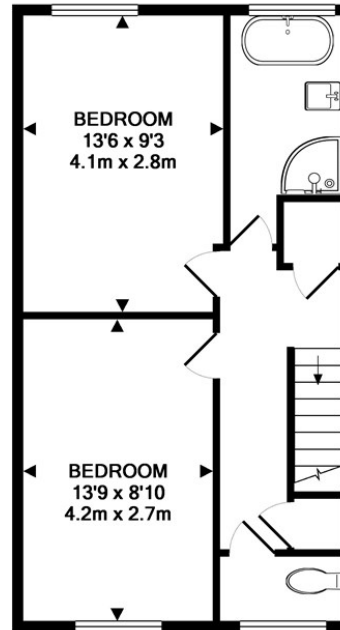
5 weeks deposit: £1038







1ST FLOOR  
APPROX. FLOOR  
AREA 342 SQ.FT.  
(31.8 SQ.M.)



2ND FLOOR  
APPROX. FLOOR  
AREA 397 SQ.FT.  
(36.9 SQ.M.)



TOTAL APPROX. FLOOR AREA 740 SQ.FT. (68.7 SQ.M.)

Whilst every attempt has been made to ensure the accuracy of the floor plan contained here, measurements of doors, windows, rooms and any other items are approximate and no responsibility is taken for any error, omission, or mis-statement. This plan is for illustrative purposes only and should be used as such by any prospective purchaser. The services, systems and appliances shown have not been tested and no guarantee as to their operability or efficiency can be given  
Made with Metropix ©2015

Energy Efficiency Rating		Current	Potential
Very energy efficient - lower running costs			
(92 plus) <b>A</b>			
(81-91) <b>B</b>			
(69-80) <b>C</b>			
(55-68) <b>D</b>		<b>67</b>	<b>72</b>
(39-54) <b>E</b>			
(21-38) <b>F</b>			
(1-20) <b>G</b>			
Not energy efficient - higher running costs			
<b>England &amp; Wales</b>		EU Directive 2002/91/EC	

Agents Note: Whilst every care has been taken to prepare these particulars, they are for guidance purposes only. All measurements are approximate and are for general guidance purposes only and whilst every care has been taken to ensure their accuracy, they should not be relied upon and potential buyers/tenants are advised to recheck the measurements

**OFFICE ADDRESS**  
88 Cheshire Street  
London  
E2 6EH

**OFFICE DETAILS**  
0207 739 6969  
info@peachproperties.com  
www.peachproperties.com