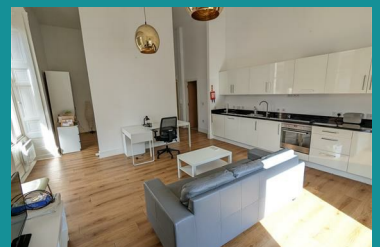




Apartment 55 Town Hall, Bexley Square, Salford, M3 £1,100 Per Month



**** WATER AND ELECTRICITY BILLS INCLUDED IN RENT**** Available 4th August. Furnished. A larger than average studio apartment located on the first floor of the grade II listed former town hall at Bexley Square just off Chapel Street in a convenient location close to Spinningfields, Deansgate and Salford University. This impressive corner aspect property benefits from high ceilings, large windows and bright interior. With a number of independent bars, cafes and restaurants on the door step the property also offers easy access to a number of transport links which include Salford Central train station and bus route. EPC Rating (E) Council tax band (B)



- Available 4th August
- First Floor Property
- High Ceilings & Large Windows
- Short Walk from Spinningfields & Deansgate
- Converted Town Hall Building
- Large Studio Apartment
- Furnished Accommodation
- Water & Electricity Bills Included In Rent
- Popular Location off Chapel Street Close to Shops, Bars & Restaurants
- Bright Corner Aspect Position