



Guide Price
£290,000

Freehold

3x  1x  1x 

**Invicta Road,
Folkestone, Kent, CT19**

OVER 60?

Secure this property
for up to **59% less!**

Wards
Helping you move forwards



Main features

- Recently renovated to a high standard, ready to move straight into
- Period features
- High efficiency heat pump
- Excellent transport links to London
- Close to local amenities

Accommodation

SPLIT LEVEL GROUND FLOOR

Entrance Hall
 Lounge: 24'8 x 11'2 (7.52m x 3.41m)
 Kitchen: 13'4 x 11'5 (4.07m x 3.48m)

SPLIT LEVEL FIRST FLOOR

Landing
 Bedroom 2: 13'4 x 11'0 (4.07m x 3.36m)
 Bedroom 3: 10'3 x 9'0 (3.13m x 2.75m)
 Bathroom: 8'0 x 7'7 (2.44m x 2.31m)

SECOND FLOOR

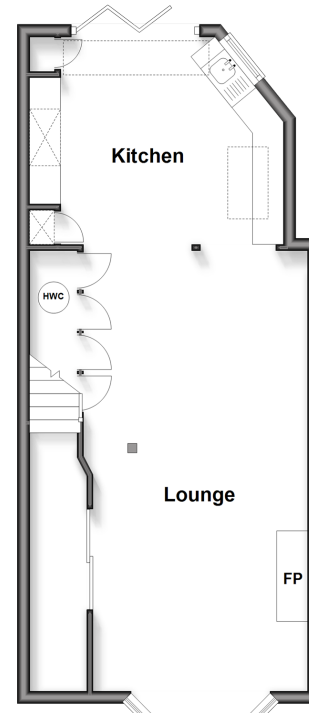
Landing
 Bedroom 1: 13'4 x 11'6 (4.07m x 3.51m)

OUTSIDE

Courtyard Garden

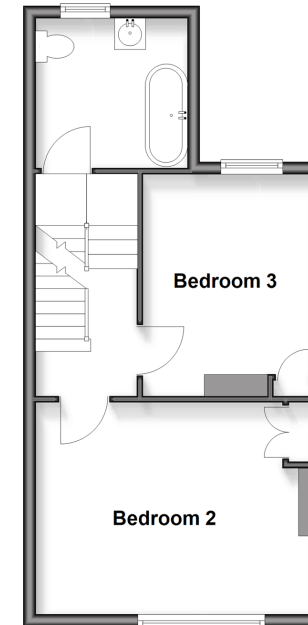
Split Level Ground Floor

Approx. 45.1 sq. metres (485.6 sq. feet)



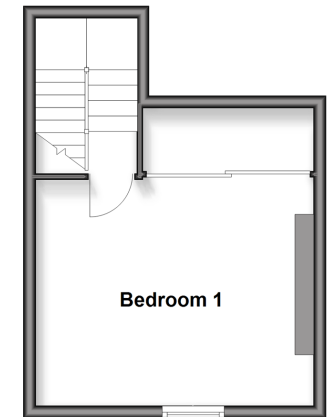
Split Level First Floor

Approx. 37.7 sq. metres (405.6 sq. feet)



Second Floor

Approx. 23.7 sq. metres (255.2 sq. feet)



Call Folkestone - 01303 256505 ■ wardsfolkent.co.uk

■ Legal advice should be taken to verify fixtures/fittings, planning, alterations and/or lease details
 ■ Through a Homewise Home For Life Plan people aged 60+ can secure this property for up to 50% less, by purchasing a Lifetime Lease.

■ Appliances & services are untested, dimensions are approximate and floor plans are not to scale



12638455/20251024/ET/LS1