

Stratford-Upon-Avon, Warwickshire, CV37



Price as listed



This pre-owned, modern Omar Regency (45'x20') luxury park home is perfect for those looking for a detached, easy-to-maintain, bungalow-style property. The home has a modern kitchen with integrated appliances and utility room, there is a dining area and comfortable living room with an electric fireplace. The master bedroom has a walk in wardrobe and en suite, there is a second double bedroom and a bathroom.

This park is a beautiful riverside development located in the idyllic village of Welford-on-Avon, with lovely country and riverside views. There are just 25 homes and residents can enjoy a community BBQ area. Welford-on-Avon is set in the heart of South Warwickshire and lies on the banks of the River Avon, five miles west of Stratford-upon-Avon, three miles south of Alcester, and just one mile from Bidford-on-Avon.

Age restriction: Over 50s

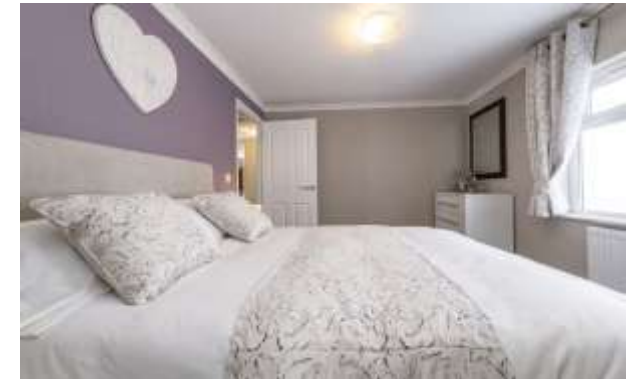
Pet friendly: Yes

Site fees (at time of listing): £259.14 per month

Residential license

Key Features

- Exceptionally high specification
- Modern design
- Over 50s
- Part Exchange available
- Pre-owned park home
- Residential development
- Village location
- Community living
- Fully furnished
- Garden



House to sell?

Hassle-free Property Part-Exchange is available from Quickmove Properties, with no estate agent fees, no solicitor's fees and no market uncertainty.

CONTACT US

01793 840917

advice@quickmoveproperties.co.uk

