

**LONDON
VICTORIA
GROUPS**



Reflection Apartments, Cascade Way

, LONDON W12 7ST

- White city/Wood land Station
- Private cinema room with Blu-ray and PS4 Pro facilities
- Meeting rooms and business spaces
- Secure entry system and lift access
- EPC-B
- Swimming pool and luxury spa facilities
- Residents' lounge and reading room
- Beautifully landscaped communal gardens
- Fully equipped gym
- CTB-E

£4,000 PCM

Local Authority **Hammersmith
And Fulham**
Council Tax Band **E**
EPC Rating **B**

**TWO BEDROOM
TYPE 09A&B**

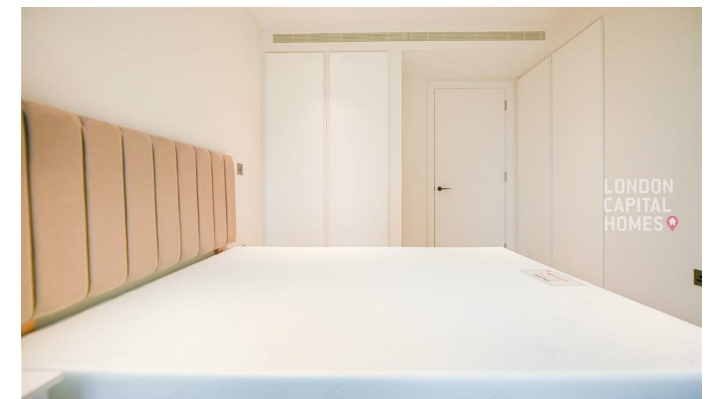
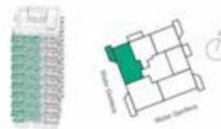


Levels: 01-08

Plots Type 09A: L.01.05, L.03.05, L.05.05, L.07.05, L.09.05, L.11.04, L.13.04, L.15.04, L.17.04

Plots Type 09B: L.02.05, L.04.05, L.06.05, L.08.05, L.10.05, L.12.04, L.14.04, L.16.04, L.18.04

Internal area	73.8 m ²	795 sq ft
External area	7.3 m ²	78 sq ft
Kitchen	2.04 x 4.03 m	85 8" x 156 1"
Living/Dining	3.57 x 4.81 m	119 8" x 159 1"
Bedroom 1	3.32 x 3.47 m	104 1" x 115 4"
Bedroom 2	2.79 x 3.47 m	85 7" x 115 4"
Balcony	4.86 x 1.03 m	159 2" x 35 2"



London Office Office
Spaces Victoria, 25 Wilton Road, Pimlico,
London, SW1V 1LW

Contact
020 3084 3094
XL@londonvictoriagroups.co.uk
www.londonvictoriagroups.co.uk

Agents Note: Whilst every care has been taken to prepare these particulars, they are for guidance purposes only. All measurements are approximate and for general guidance purposes only and whilst every care has been taken to ensure accuracy, they should not be relied upon and potential buyers/tenants are advised to recheck the measurements.