

LIVERMORES

THE ESTATE AGENTS

4 Bedrooms

House - Semi-Detached

Offers In The Region Of

£525,000

Located in

Dartford



www.livermores.co.uk



79 East Hill

Dartford DA1 1SN

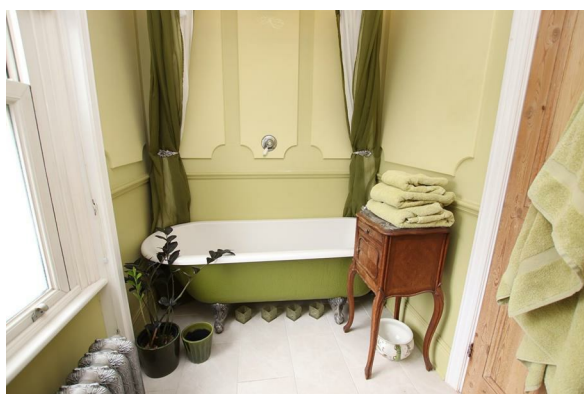
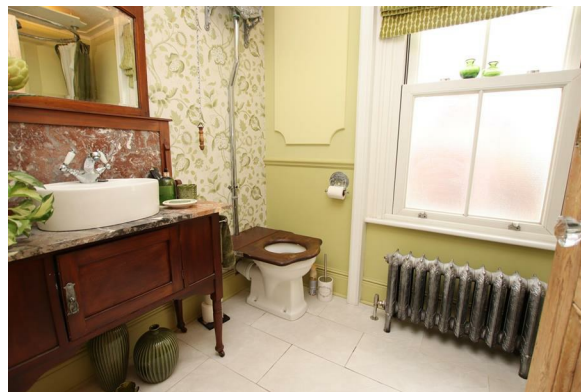


NO ONWARD CHAIN.... This splendid semi-detached Victorian house, built in 1896, offers a delightful blend of period features and modern living. The property is set over three floors, two good size reception rooms, with a well-appointed kitchen/breakfast room to the ground floor with 3 bedrooms double bedrooms with a stunning Victorian bathroom on the middle floor with a large bedroom and bathroom on the second. The property has some lovely Victorian features including double glazed sash windows, cornicing, fireplaces (not checked) basically everything you would want from a home of this age, with the added bonus of a parking space to the front and a large double garage to the rear and is situated just half a mile from Dartford Mainline Station, and a little over a mile from the popular Dartford Grammar Schools, plus other excellent schools locally. An internal viewing is required to fully appreciate all this has to offer.



79 East Hill

£525,000 Freehold




- NO ONWARD CHAIN
- 2 RECEPTION ROOMS
- LOVELY VICTORIAN FEATURES
- LARGE DOUBLE GARAGE TO REAR
- 0.5 MILES TO DARTFORD STATION
- 4 GOOD SIZE BEDROOMS
- 2 BATHROOMS
- OFF ROAD PARKING
- IN THE HEART OF DARTFORD
- EPC RATING COUNCIL TAX BAND D



Council Tax Band D

Local Authority Dartford

Agents Note: Whilst every care has been taken to prepare these particulars, they are for guidance purposes only. All measurements are approximate and are for general guidance purposes only and whilst every care has been taken to ensure their accuracy, they should not be relied upon and potential buyers/tenants are advised to recheck the measurements.

Energy Efficiency Rating		
	Current	Potential
Very energy efficient - lower running costs		
(92 plus) A		
(81-91) B		
(69-80) C		
(55-68) D		
(39-54) E		
(21-38) F		
(1-20) G		
Not energy efficient - higher running costs		
England & Wales	EU Directive 2002/91/EC	

1 Hythe Street

Dartford

Kent

DA1 1BE

LIVERMORES
THE ESTATE AGENTS

dartford@livermores.co.uk

01322 228090

www.livermores.co.uk