



Guide Price
£450,000

Freehold

2x  1x  1x 

**Coutts Avenue, Shorne,
Gravesend, Kent, DA12**

OVER 60?

Secure this property
for up to **59% less!**

Wards
Helping you move forwards



Main features

- Sought after location
- Beautiful well planted rear garden
- Bright and airy conservatory overlooking the garden
- Charming summerhouse
- Convenient location for local amenities, countryside walks and transport links

Accommodation

GROUND FLOOR

Entrance Hall

Bedroom 2: 11'10 x 10'10 (3.61m x 3.30m)

Shower Room

Bedroom 1: 12'1 x 11'6 (3.69m x 3.51m)

Kitchen/Diner : 23'1 x 11'0 (7.04m x 3.36m)

Lounge : 15'1 x 11'10 (4.60m x 3.61m)

Conservatory: 12'0 x 7'0 (3.66m x 2.14m)

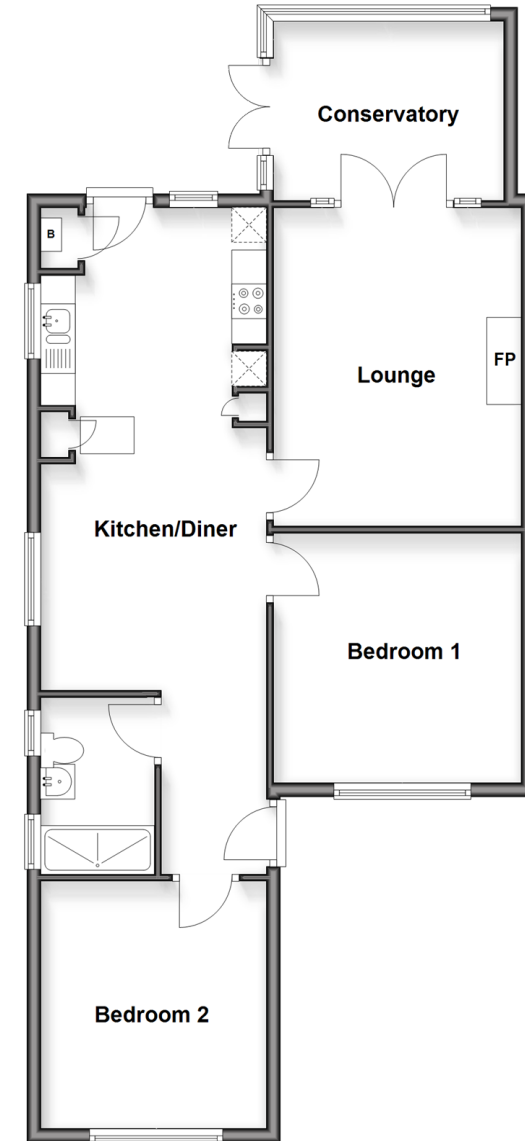
OUTSIDE

Front Garden

Driveway

Rear Garden

Ground Floor
Approx. 82.5 sq. metres (888.5 sq. feet)



Call Gravesend - 01474 352417 ■ wardsof Kent.co.uk

- Legal advice should be taken to verify fixtures/fittings, planning, alterations and/or lease details
- Appliances & services are untested, dimensions are approximate and floor plans are not to scale
- Through a Homewise Home For Life Plan people aged 60+ can secure this property for up to 59% less, by purchasing a Lifetime Lease



11125881/20260224/SB/SB