

## Tower Mill Road, SE15

£357 Per week

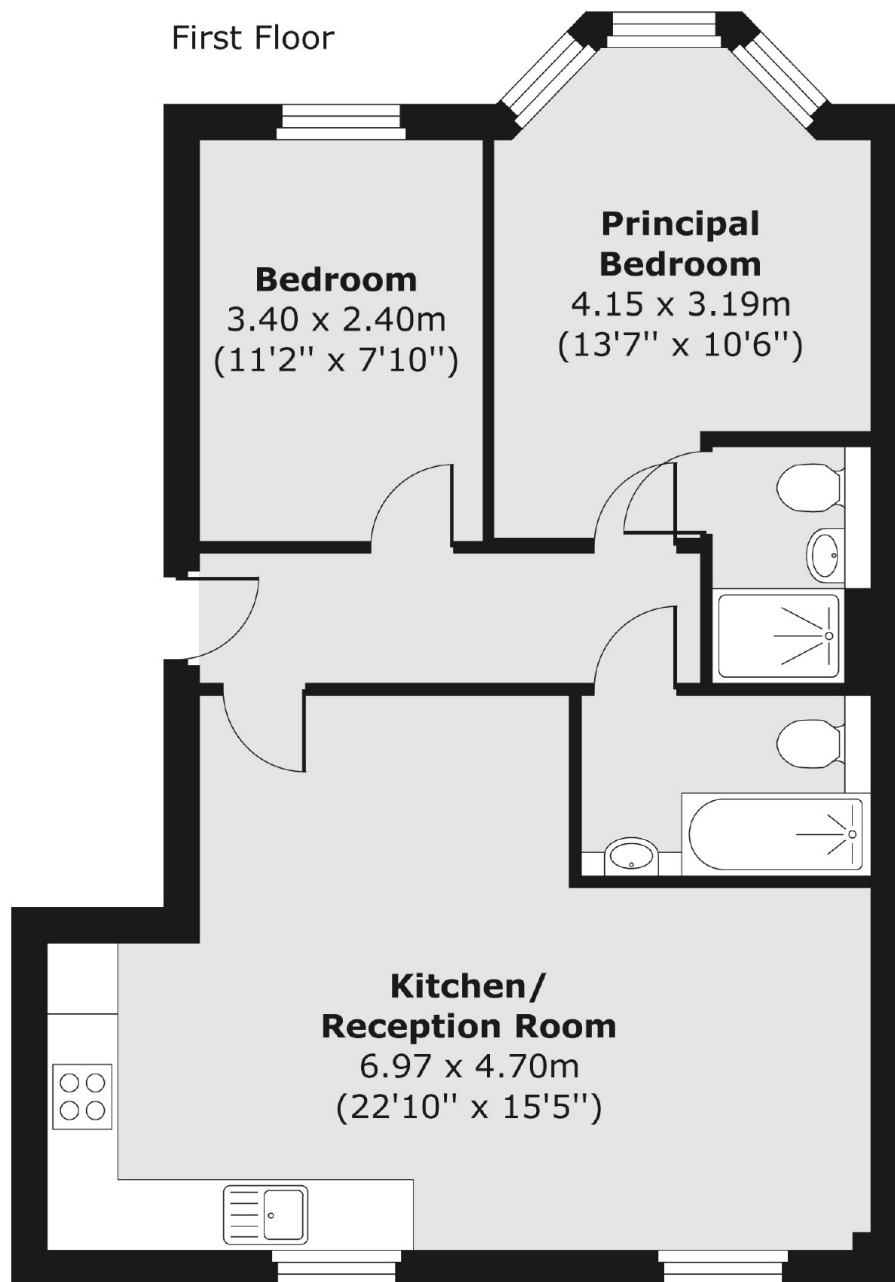
A well presented two double bedroom, two bathroom first floor apartment which is ideally located for Burgess Park. The property also offers a spacious open plan reception room with a fully integrated kitchen.

The property is close to the newly redeveloped Burgess Park and is close to many bus services taking you into Central London and through to Elephant and Castle (Northern and Bakerloo line).

### Features

- Two Bedroom Apartment
- Secure Bike Storage
- Two Bathrooms
- Modern Development
- Communal Garden
- Close To Burgess Park

# Tower Mill Road, London, SE15



Total area (approx.) 58.17 sq. m (626 sq. ft)