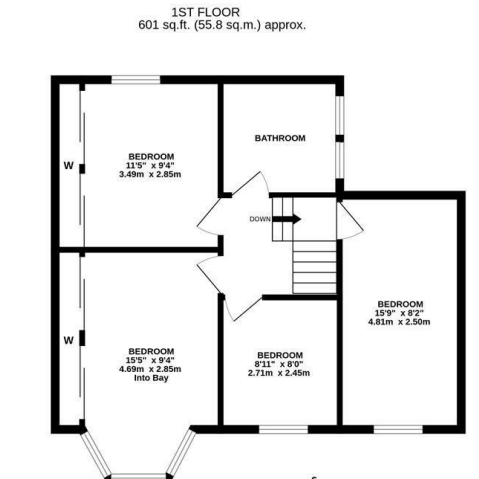
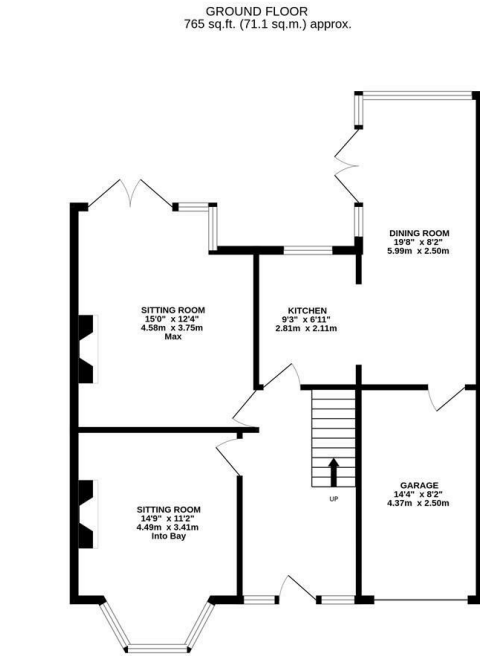


Well Presented 1930's Semi-Detached Family Home with 19ft Open Plan Kitchen Diner and a South Facing Rear Garden! This four bedroom semi-detached family home ideally located on the south backing side of Southwood Gardens, Kenton. Situated close to excellent local schools, Southwood Gardens tucked behind Kenton Lane, provides perfect family accommodation with immediate access to the A1 western bypass and close to the cafés, restaurants and shops of Gosforth High Street.

Boasting close to 1,400 Sq ft, the accommodation briefly comprises: Entrance hallway, stairs to first floor; sitting room with walk in bay window, fireplace and built in alcove storage; secondary sitting room with fireplace and french doors to the rear garden; Kitchen with a range of fitted units and spotlighting; open to the extended, light and welcoming dining room space. With access to a 14 ft garage perfect for storage or car parking and further French doors leading to the south-facing rear garden. The first floor landing gives access to; bedroom one, a 15ft bedroom with walk in bay and fitted alcoves wardrobe storage. Bedroom two also with fitted alcove wardrobe storage. Family bathroom with four piece suite, bedroom three a good sized nursery or office room. Bedroom Four a 16ft bedroom giving plenty of space for a family! Externally, an enclosed paved front driveway providing multi-vehicle off-street parking, To the rear, a delightful south facing garden, a patio seating area, mature tree and fenced boundaries. Offering well proportioned living for a growing family, this great home demands an internal inspection.

Stylish 1930's Semi-Detached Home | 1,366 Sq ft (126.9m2) | Four Bedrooms | Sitting Room | 19ft Open Plan Kitchen Diner | Garage | Family Bathroom with Four Piece Suite | Front Driveway | Enclosed South Facing Rear Garden | GCH & DG | Freehold | Council Tax Band: C | EPC: tbc



TOTAL FLOOR AREA: 1366 sq.ft. (126.9 sq.m.) approx.  
Whilst every attempt has been made to ensure the accuracy of the floorplan contained here, measurements of doors, windows, rooms and any other items are approximate and no responsibility is taken for any error, omission or mis-statement. This plan is for illustrative purposes only and should be used as such by any prospective purchaser. The services, systems and appliances shown have not been tested and no guarantee as to their operability or efficiency can be given.  
Made with Mempro ©2020



**Offers Over £365,000**

**IMPORTANT NOTE:** These particulars and the descriptions and measurements herein do not constitute representation and whilst every effort has been made to ensure accuracy, this cannot be guaranteed.

