



## Godson Street, N1

### £475,000

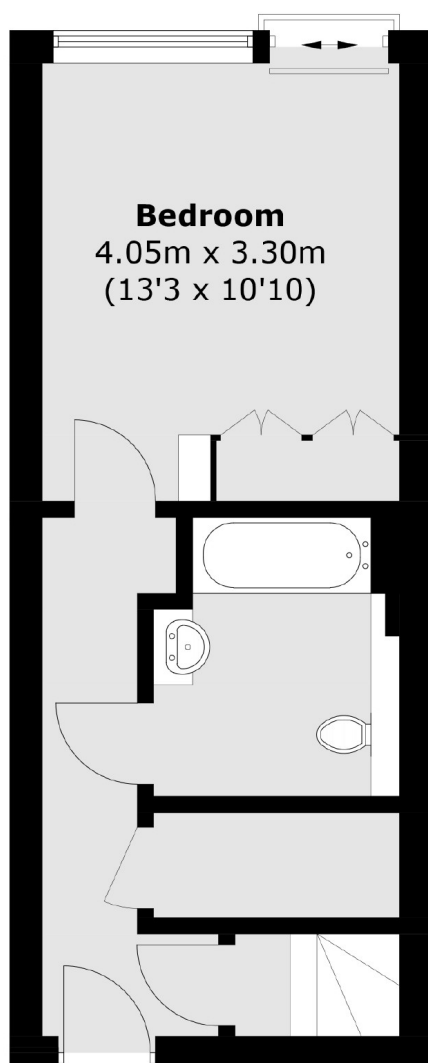
This exceptional split-level apartment, is part of an award-winning development originally completed in 2016 as a joint venture between Edgley Design and Spaced Out Architects. The open plan kitchen/ living space leads to a south facing balcony flooding the apartment with natural light.

Located in a pedestrianised street in central Islington, this apartment is just 0.3miles to Angel tube station (Northern Line) and 0.7miles to King's Cross Station, with multiple underground connections and access to the famous Euro Star.

### Features

- Split Level
- Award Winning Development
- South Facing Terrace
- Central Angel
- Modern Building
- Service Charge - £4445/year

# Godson Street, London, N1



**Second Floor**



**Third Floor**

Total area (approx.): 53.5 sq. m (575.8 sq. ft)  
Balcony: 7.7 sq. m (82.9 sq. ft)