

SNELLERS

ESTATE AGENTS



Hawks Road, KT1

£1,875 PCM

Well presented ground floor two-bedroom, two-bathroom modern apartment in the heart of Kingston upon Thames, featuring contemporary interiors, open-plan living, and excellent access to local shops, riverside walks, and transport links.



Well presented ground floor two-bedroom, two-bathroom modern apartment in the heart of Kingston upon Thames, featuring contemporary interiors, open-plan living, and excellent access to local shops, riverside walks, and transport links.

0.4 Miles To Norbiton Station

- Two Double Bedrooms • Two Bathrooms • Allocated Parking •
- Ground Floor • Available From August 5th •



SNELLERS

ESTATE AGENTS

Pyramid Court, KT1 3DX

Approximate Gross Internal Area :-
57 sq m / 613 sq ft

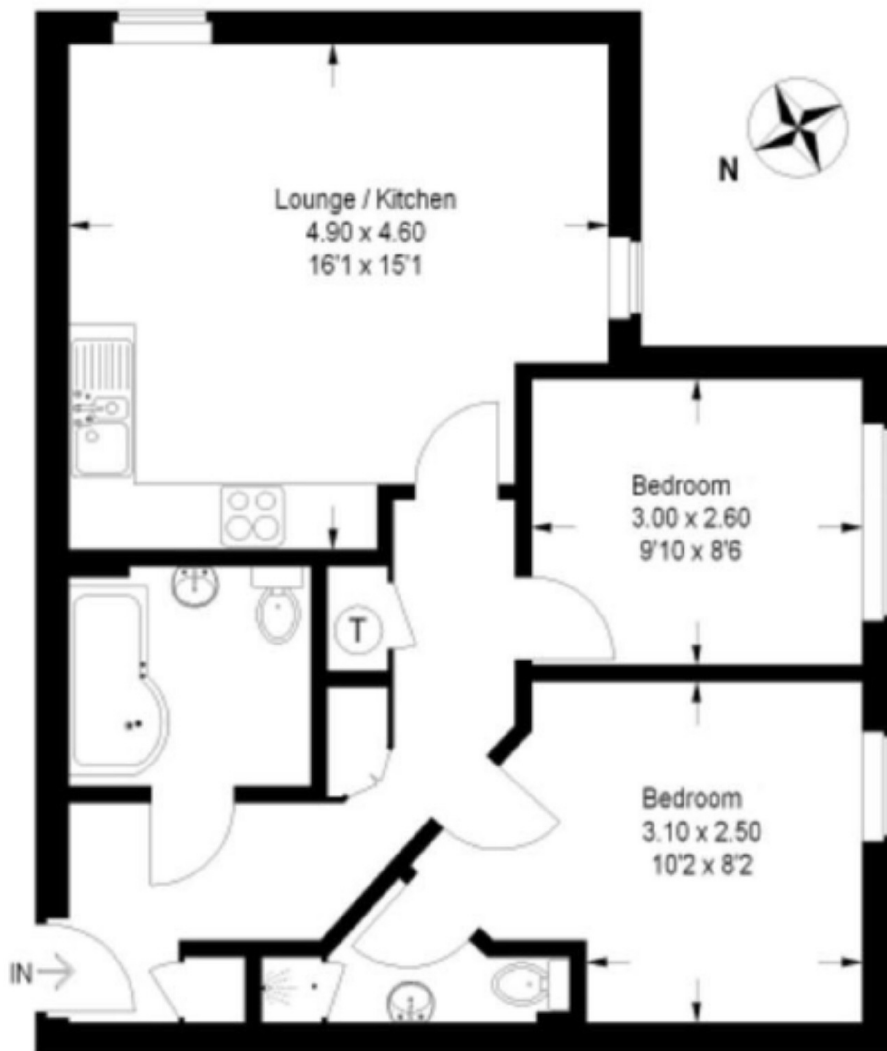


Illustration for identification purposes only, measurements are approximate, not to scale.

Snellers Kingston Lettings
17-21 Richmond Road
Kingston
KT2 5BW
020 8546 0505
kingstonlettings@snellers.co.uk

Energy Rating: We aim to make our particulars both accurate and reliable. However they are not guaranteed; nor do they form part of an offer or contract. If you require clarification on any points then please contact us, especially if you're traveling some distance to view. Please note that appliances and heating systems have not been tested and therefore no warranties can be given as to their good working order