



29b London House Mews High Street, Holywell – CH8 7TE
£575 pcm

29b London House Mews High Street

Holywell, Holywell

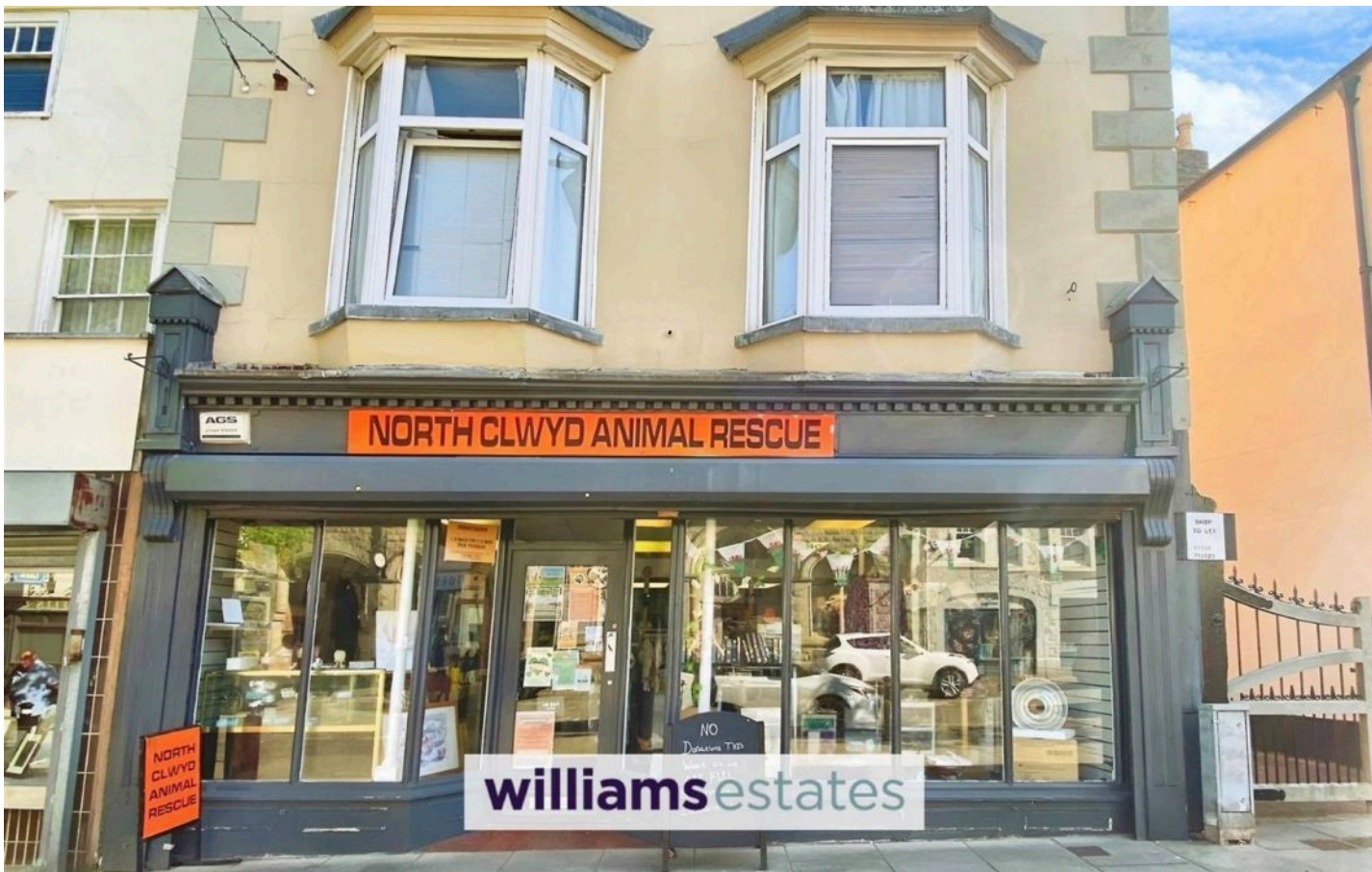
Viewing highly advised

A bright and spacious shop set in a town centre location, having large bay windows overlooking the high street being perfect for attracting business. With a large shop front, having display window ledge, strip lighting, in built shelving surrounding, power points and useful back storage room with W.C.

Council Tax - Business rates will apply

Council Tax band: TBD





Accommodation

London house is accessed via a single glazed glass door, leading into the main shop.

Store Room

Dimensions: 4.62 x 2.86 (15'1" x 9'4"). Having a wooden fire exit door to the rear, inbuilt metal shelving surrounding, stainless steel sink with mixer taps over, worktops with base units under, strip lighting, power points and door leading off to W.C.

W.C/Cloakroom

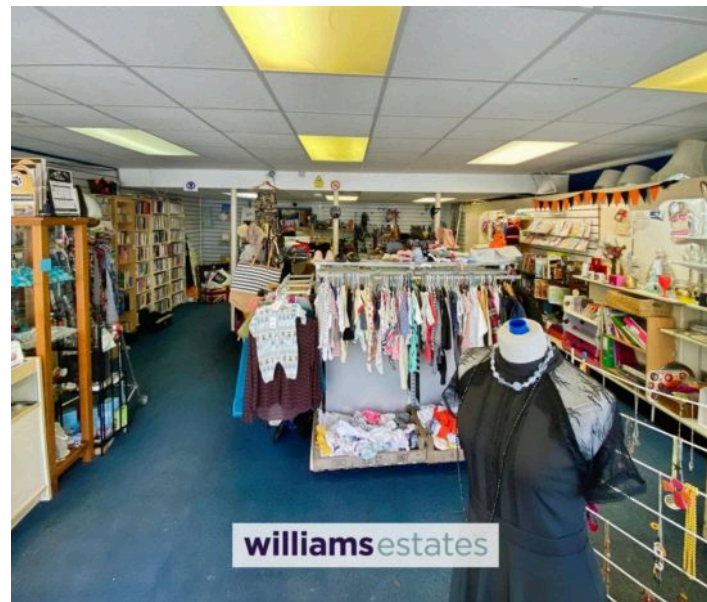
Having extra storage, W.C, hand wash basin with taps over, lighting and extractor fan.

Main Shop

Dimensions: 9.0 x 6.5 (29'6" x 21'3"). Having single glazed bay windows with wooden frames to the front elevation, built in shelving surrounding, ceiling tiles, downlights and power points.

Description

London House is situated on Holywell high street in Flintshire. Holywell town boasts a range of shops, cafes and pubs and has a regular footfall of pedestrians from local schools and businesses. Holywell benefits easy access to the A55 and having historical landmarks such as St Winefride's well and Basingwerk Abbey just a short walk away.



Accommodation

London house is accessed via a single glazed glass door, leading into the main shop.

Store Room

Dimensions: 4.62 x 2.86 (15'1" x 9'4"). Having a wooden fire exit door to the rear, inbuilt metal shelving surrounding, stainless steel sink with mixer taps over, worktops with base units under, strip lighting, power points and door leading off to W.C.

W.C./Cloakroom

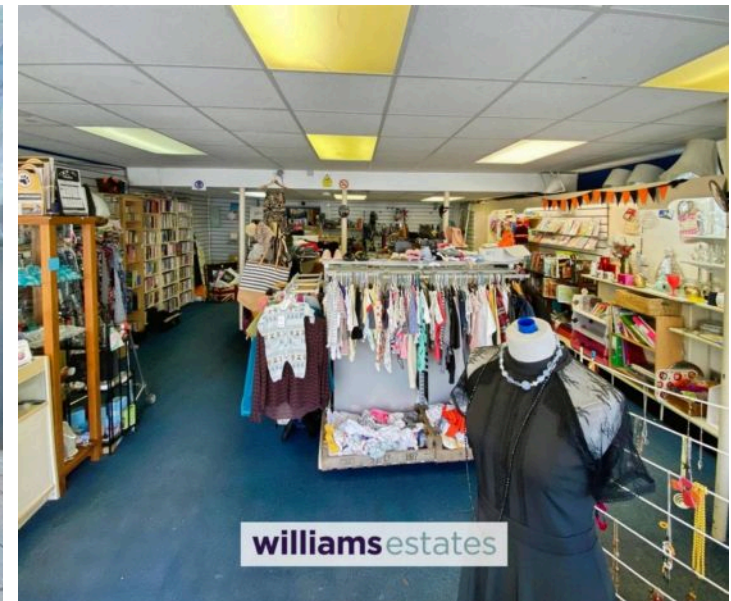
Having extra storage, W.C, hand wash basin with taps over, lighting and extractor fan.

Main Shop

Dimensions: 9.0 x 6.5 (29'6" x 21'3"). Having single glazed bay windows with wooden frames to the front elevation, built in shelving surrounding, ceiling tiles, downlights and power points.

Description

London House is situated on Holywell high street in Flintshire. Holywell town boasts a range of shops, cafes and pubs and has a regular footfall of pedestrians from local schools and businesses. Holywell benefits easy access to the A55 and having historical landmarks such as St Winefride's well and Basingwerk Abbey just a short walk away.

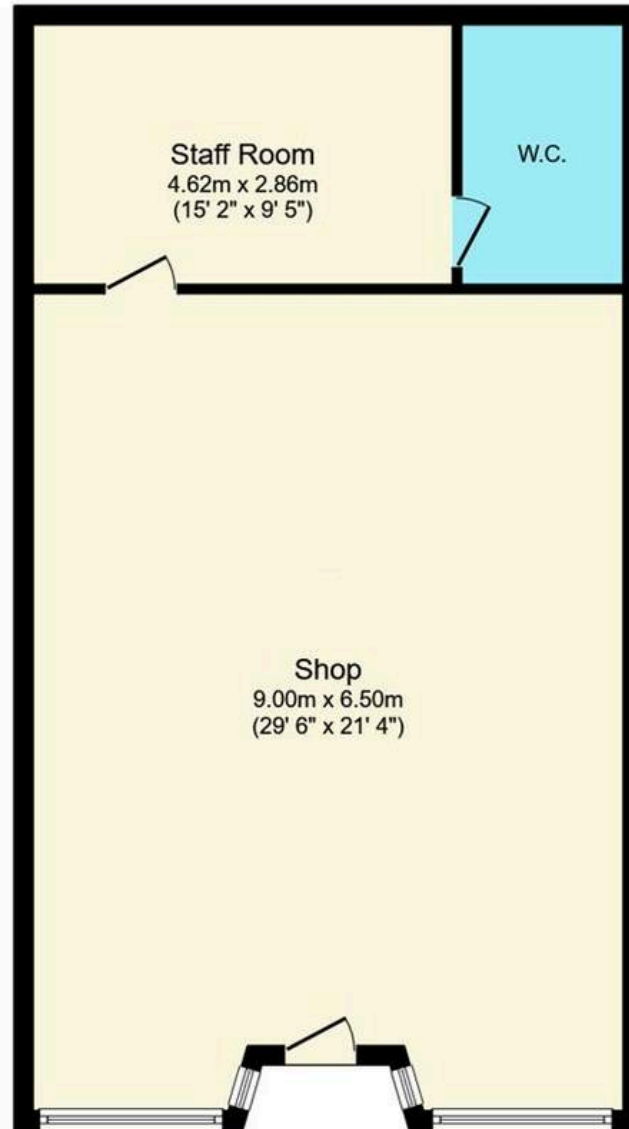




NORTH CLWYD ANIMAL RESCUE

williams estates

NO Donations This Week as we are FULL



Total floor area: 76.4 sq.m. (822 sq.ft.)

This floor plan is for illustrative purposes only. It is not drawn to scale. Any measurements, floor areas (including any total floor area), openings and orientations are approximate. No details are guaranteed, they cannot be relied upon for any purpose and do not form any part of any agreement. No liability is taken for any error, omission or misstatement. A party must rely upon its own inspection(s). Powered by www.Propertybox.io

williams
estates



Williams Lettings

Williams Estates, Princes Road - LL18 5PT

01745 299399 • lettings@williamsestates.com • www.williamsestates.com/

Whilst every care has been taken to prepare these particulars, they are issued by Williams Lettings Limited, trading as Williams Lettings, for guidance purposes only and do not constitute any part of an offer or contract. All measurements are approximate and provided for general guidance only. Whilst every effort has been made to ensure their accuracy, they should not be relied upon and prospective tenants are advised to recheck the measurements themselves.