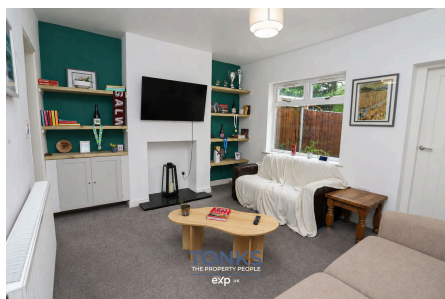


Beecher Street, Halesowen, B63 2DP

Offers In Region Of £200,000

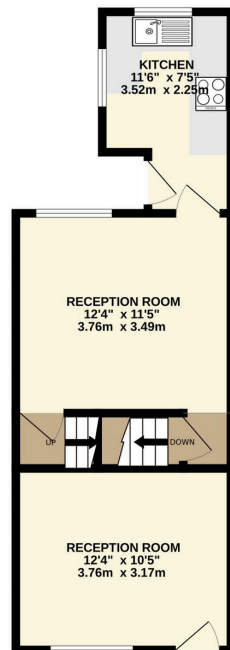


This is an exceptionally presented home with a contemporary interior on this lovely quiet road in Halesowen.

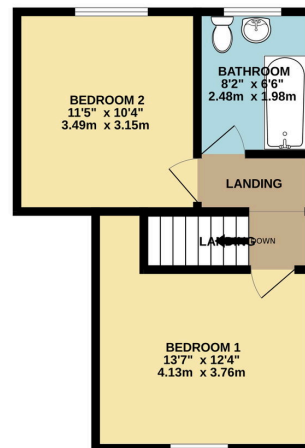
Key Features

- Exceptionally presented throughout
- Upstairs modernised house bathroom
- Beautifully maintained rear garden not overlooked
- Stylish fitted kitchen
- Lovely quiet road
- Two double bedrooms
- Two reception rooms
- Council tax band A
- On street parking with no restrictions
- Perfect for first time buyers

GROUND FLOOR
384 sq.ft. (35.7 sq.m.) approx.



1ST FLOOR
360 sq.ft. (33.4 sq.m.) approx.



TOTAL FLOOR AREA: 744 sq.ft. (69.2 sq.m.) approx.
Whilst every attempt has been made to ensure the accuracy of the floorplan contained herein, measurements of doors, windows, rooms and any other items are approximate and no responsibility is taken for any error, omission or mis-statement. This plan is for illustrative purposes only and should be used as such by any prospective purchaser. The services, systems and appliances shown have not been tested and no guarantee as to their operability or efficiency can be given.
Made with Metropix ©2025