



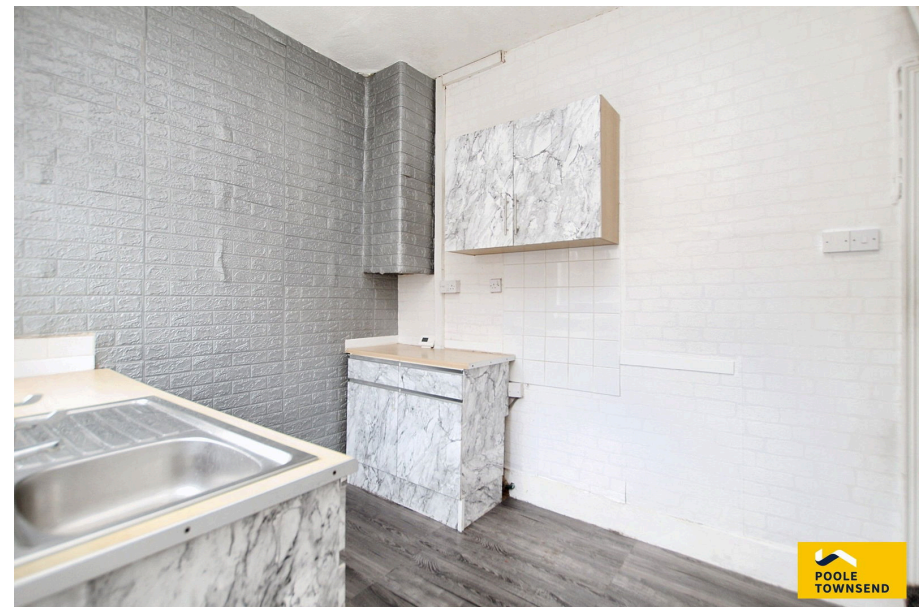
**POOLE  
TOWNSEND**



Westmorland Street, Barrow-in-furness, LA14 5AS

£75,000

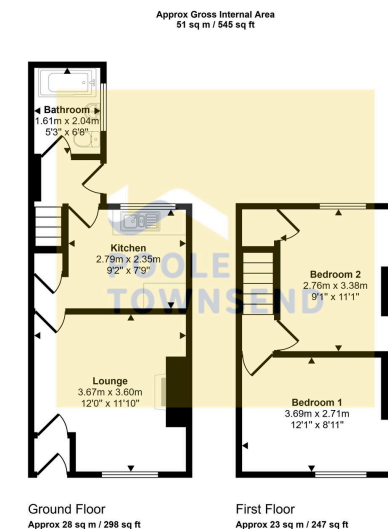
2 1 1





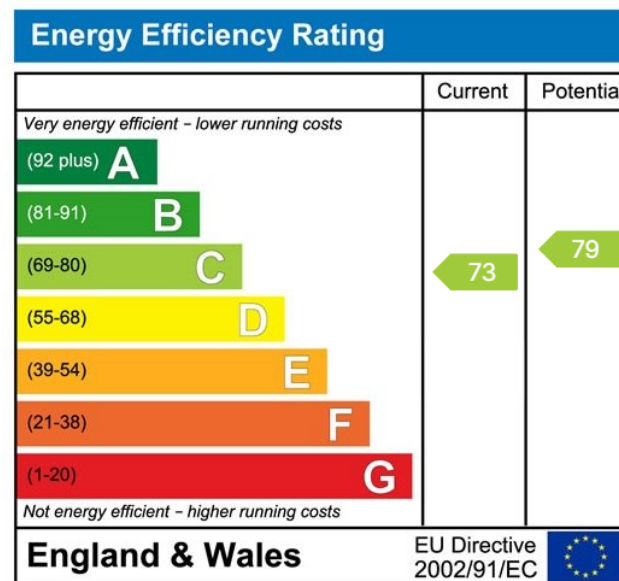
- 2 Bed Terraced Property
- NO ONWARD CHAIN!!
- situated in a popular residential area
- comfortable size lounge
- space for additional storage beneath stairs case





This floorplan is only for illustrative purposes and is not to scale. Measurements of rooms, doors, windows, and any items are approximate and no responsibility is taken for any error, omission or mis-statement. Icons of items such as bathroom suites are representations only and may not look like the real items. Made with Made Snappy 360.

NEW This is a great property to consider for any buyer searching for a home that could be upgraded and modernised, either as an investment opportunity to re-sell/let or to simply finish to your own taste and standards. The accommodation comprises; lounge, kitchen, GF bathroom and two bedrooms. There is a GCH system, DG and an enclosed galley style yard. No upper chain.



Visit us at  
[www.pooletownsend.co.uk](http://www.pooletownsend.co.uk)  
[enquiries@pooletownsend.co.uk](mailto:enquiries@pooletownsend.co.uk)

We are open  
 Monday – Friday 9.00 – 5.00  
 Saturday 9.00 – 1.00

Barrow 01229 811811  
 Ulverston 01229 588111  
 Grange 015395 33316  
 Kendal 01539 734455  
 Milnthorpe 015395 62044