



Park Drive, E14

£1,269 Per week

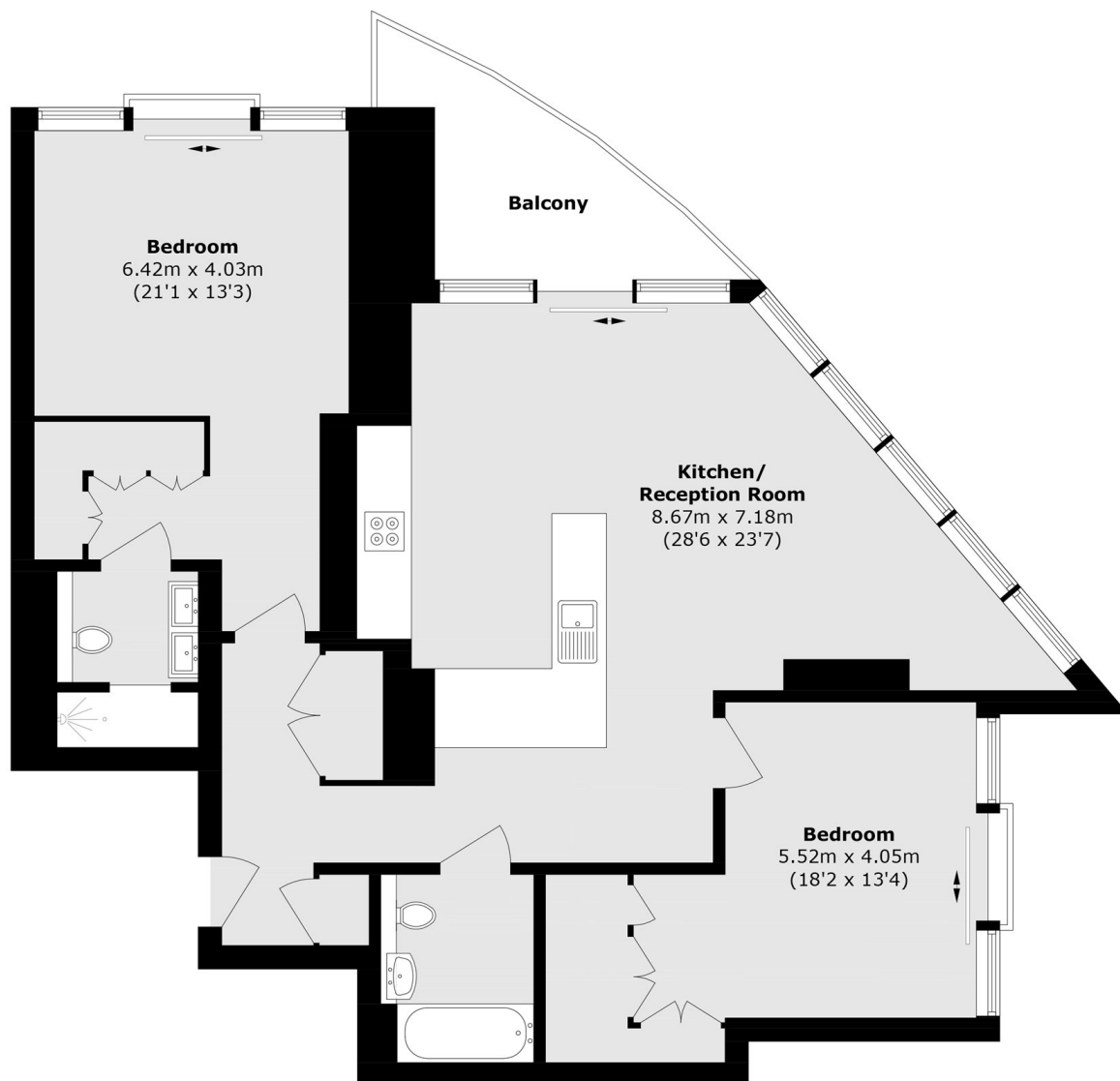
An impressive two bedroom apartment set within one of the most desirable developments within Canary Wharf. Situated on one of the highest floors, with unrivalled views, and over 1,000sqft of internal floorspace.

Residents of One Park Drive enjoy private security within the complex and central Canary Wharf, in addition to having access to luxurious on-site facilities, which include: a 24/7 concierge, lounge & library, cinema, swimming pool, gymnasium and spa.

Features

- Very High Floor
- Two Double Bedrooms
- Over 1,000sqft
- Luxurious Fittings
- Private Balcony
- On-Site Resident Facilities

Park Drive, London, E14



Total area (approx.): 107.7 sq. m (1,159.3 sq. ft)

Balcony (approx.): 7.5 sq. m (80.7 sq. ft)

Dexters

Canary Wharf East
39 Westferry Road
London
E14 8JH
Lettings
020 7590 9550

Energy Rating: B. We aim to make our particulars both accurate and reliable. However they are not guaranteed; nor do they form part of an offer or contract. If you require clarification on any points then please contact us, especially if you're traveling some distance to view. Please note that appliances and heating systems have not been tested and therefore no warranties can be given as to their good working order.

 **RICS** | Regulated
Estate Agent
and Letting Agent

dexters.co.uk