

MADE



11 Greenacres

Westfield, Hastings, TN35 4QT

£375,000

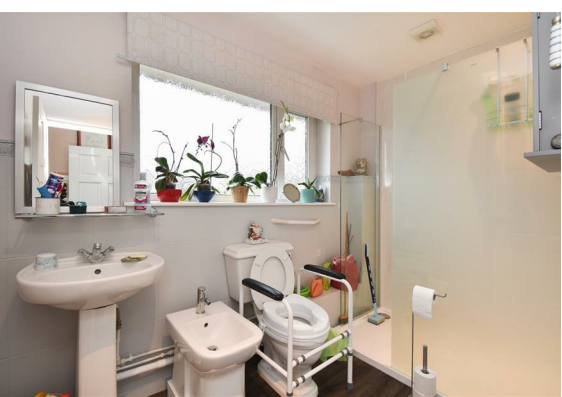


11 Greenacres

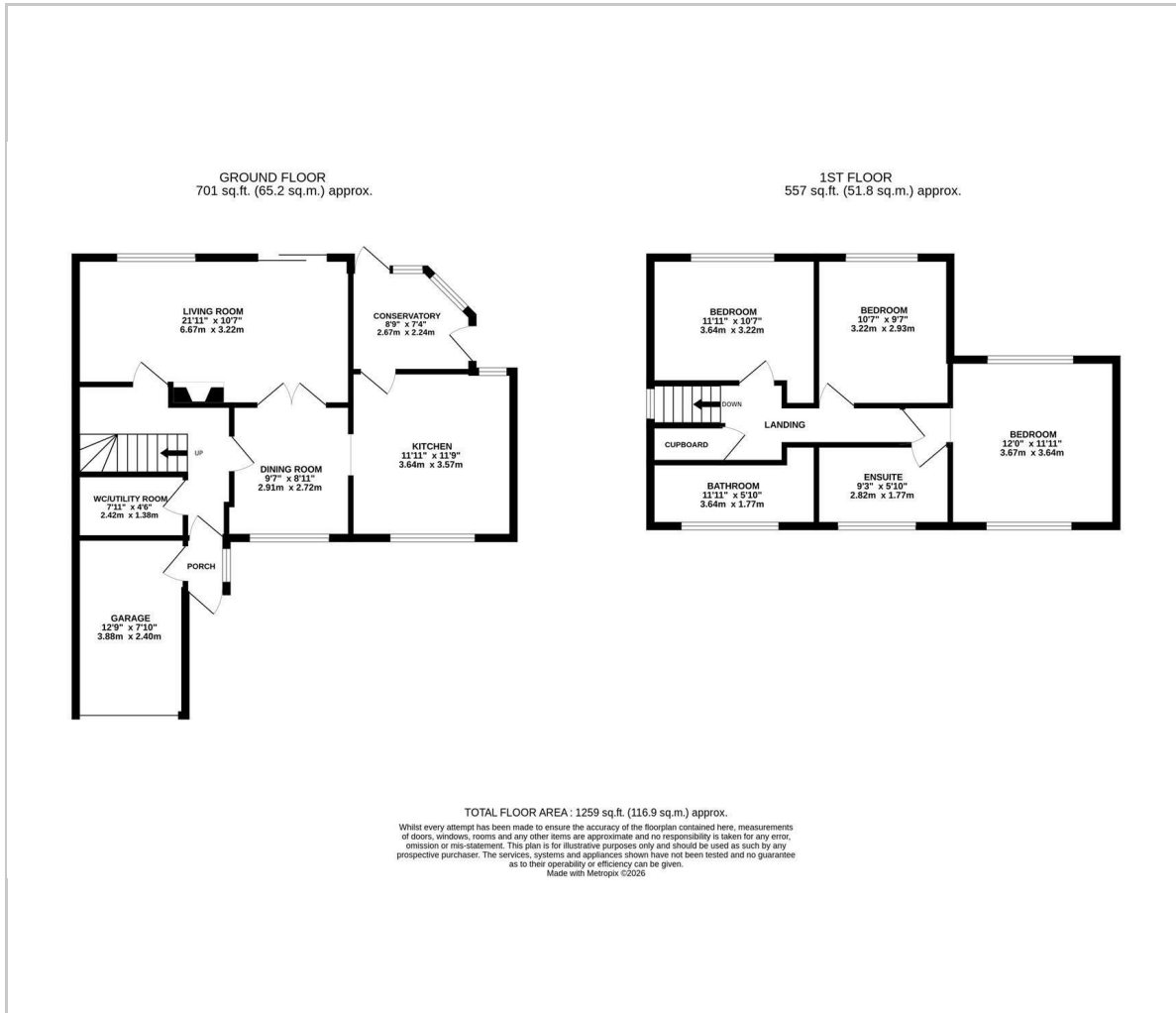
Westfield, Hastings, TN35 4QT

A spacious THREE BEDROOM end of terrace house with a GARAGE and PRIVATE DRIVEWAY situated in a QUIET CUL-DE-SAC within the village of Westfield. Westfield benefits from a popular Primary School and nursery, there is a butchers, a local shop and Village pub. The accommodation here is arranged as a BRIGHT LIVING ROOM measuring an impressive 21'11 x 10'7 which is situated at the rear of the property and enjoys access to the garden, there is a separate dining room and a modern fitted kitchen which benefits from access to the conservatory, The WC/UTILITY ROOM and access to the internal garage are also located on this floor. The first floor houses three DOUBLE BEDROOMS with the primary bedroom benefitting from an EN-SUITE SHOWER ROOM, and an additional family bathroom. Externally the rear garden provides an area of patio with an expanse of lawn, TWO GARDEN SHEDS and a SUMMER HOUSE. At the front of the house there is a DRIVEWAY providing off road parking for multiple vehicles and giving access to the GARAGE.





Floor Plan



Viewing

Please contact our Hastings Office on 01424 444700 if you wish to arrange a viewing appointment for this property or require further information.

These particulars, whilst believed to be accurate are set out as a general outline only for guidance and do not constitute any part of an offer or contract. Intending purchasers should not rely on them as statements of representation of fact, but must satisfy themselves by inspection or otherwise as to their accuracy. No person in this firms employment has the authority to make or give any representation or warranty in respect of the property.

24 Havelock Road, Hastings, East Sussex, TN34 1BP
Tel: 01424 444700 Email: hello@madehastings.co.uk <https://www.madehastings.co.uk>

Area Map



Energy Efficiency Graph

