

**OVER 60?**

Secure this property  
for up to **59% less!**



**Guide Price**

**£600,000**

**Freehold**

4x  2x  3x 

Victoria Road, Deal, Kent, CT14

*Wards*

Helping you move forwards

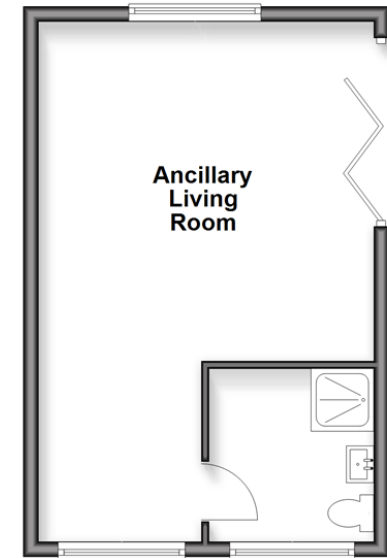
## Ground Floor

Approx. 165.5 sq. metres (1781.7 sq. feet)



## Outbuilding

Approx. 32.2 sq. metres (346.1 sq. feet)



## Accommodation

### GROUND FLOOR

Entrance Hallway

Dining Room : 13'5 x 11'11 (4.09m x 3.63m)

Lounge : 23'4 x 16'3 (7.12m x 4.96m)

Kitchen : 13'9 x 8'5 (4.19m x 2.57m)

Utility Room : 8'5 x 7'5 (2.57m x 2.26m)

Bedroom 1: 16'1 x 15'5 (4.91m x 4.70m)

En-suite Bathroom

Shower Room

Bedroom 2: 14'3 x 9'9 (4.35m x 2.97m)

Bedroom 3: 13'1 x 10'6 (3.99m x 3.20m)

Bedroom 4: 9'10 x 9'9 (3.00m x 2.97m)

### OUTBUILDING

Ancillary Living Room : 23'0 x 15'6 (7.02m x 4.73m)

Ancillary Shower Room

### OUTSIDE

Wrap Around Garden  
Driveway



## Main features

- Stunning views over golf course fields and sea
- Driveway for 4 vehicles and EV point
- Large primary bedroom with en-suite and walk in wardrobe
- Detached ancillary accommodation with shower room
- Spacious throughout ideal for families, set in a quiet location



### Nearest Schools

Primary Schools: Kingsdown and Ringwold CofE Primary 1.6 miles, St Margaret's-at-Cliffe Primary 2.6 miles, Hornbeam Primary 2.8 miles

Secondary Schools: Learning Opportunities Centre



### Transport Information

Train Stations: Walmer 3.4 miles, Martin Mill 3.8 miles, Deal 4.0 miles



### Address

Victoria Road, Deal, Kent, CT14



### Directions

For directions to this property please contact us.



*Wards*  
Helping you move forwards

Call Deal Branch 01304 361420 ■ [wardsofkent.co.uk](http://wardsofkent.co.uk)



■ Through a Homewise Home For Life Plan people aged 60+ can secure this property for up to 59% less, by purchasing a Lifetime Lease



16003377/20260330/LB1/LB1