



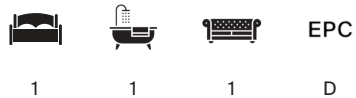
## CANNON PLACE

Hampstead, NW3



## A ONE BED FIRST FLOOR FLAT ON CANNON PLACE, NW3

Positioned on one of Hampstead's most sought-after streets, Cannon Place, this charming period flat beautifully combines classic architecture with modern comfort.



Local Authority: London Borough of Camden

Council Tax band: F

Tenure: Leasehold

Ground rent: Peppercorn

Service charge: £1,500\*

**Asking Price: £850,000**

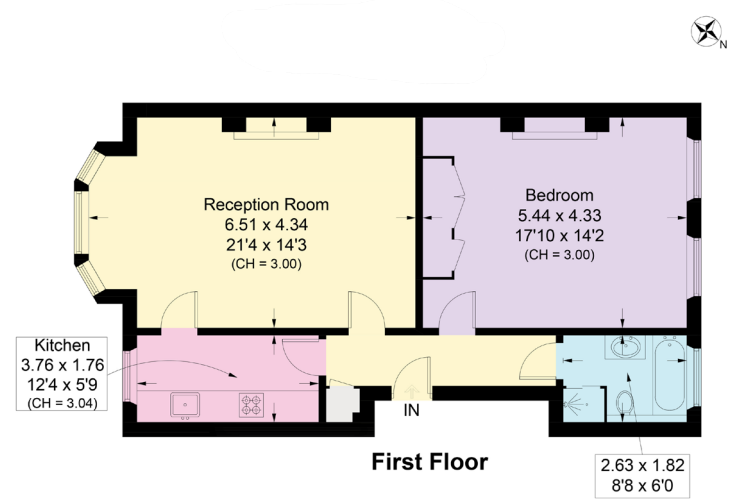


Situated on the first floor of an elegant five storey semi-detached building, the property offers a well-proportioned double bedroom, a stylish bathroom, and a bright south-facing reception room that enjoys excellent natural light throughout the day. The elevated position enhances the sense of space and outlook, with delightful views from the bedroom towards Hampstead Heath.

The apartment retains attractive period character, thoughtfully complemented by contemporary finishes, including low-maintenance waxed polished Italian marble plaster. The result is a home that feels both characterful and well suited to modern living.

Designed with practicality and efficiency in mind, the layout maximises usable space while maintaining an inviting and refined atmosphere.

\*Typical annual charge, inc. buildings Insurance and misc. costs. Expected uplift in the period 26/27 owing to some minor communal works, anticipated contribution of £2200 to cover the share; electrical work, replacement of door entry system, FRA emergency lighting, smoke detectors etc. FRA compliance. Major works split: 23% of the freeholder's expenses relating to the whole building structure, exterior and common parts, including insurance and maintenance of the building. One third of the hall/staircase lighting electricity cost.



Approximate Gross Internal Area = 72 sq m / 777 sq ft

This plan is for layout guidance only. Not drawn to scale unless stated. Windows and door openings are approximate. Whilst every care is taken in the preparation of this plan, please check all dimensions, shapes and compass bearings before making any decisions reliant upon them. (ID767266)

We would be delighted  
to tell you more.

Nathan White  
020 3833 9813  
nathan.white@knightfrank.com

Knight Frank Hampstead  
58-62 Heath Street, London,  
NW3 1EN

[knightfrank.co.uk](https://www.knightfrank.co.uk)

Your partners in property

1. Particulars: These particulars are not an offer or contract, nor part of one. You should not rely on statements given by Knight Frank in the particulars, by word of mouth or in writing ("information") as being factually accurate about the property, its condition or its value. Neither Knight Frank nor any joint agent has any authority to make any representations about the property, and accordingly any information given is entirely without responsibility on the part of Knight Frank. 2. Material Information: Please note that the material information is provided to Knight Frank by third parties and is provided here as a guide only. While Knight Frank has taken steps to verify this information, we advise you to confirm the details of any such material information prior to any offer being submitted. If we are informed of changes to this information by the seller or another third party, we will use reasonable endeavours to update this as soon as practical. 3. Photos, Videos etc: The photographs, property videos and virtual viewings etc. show only certain parts of the property as they appeared at the time they were taken. Areas, measurements and distances given are approximate only. 4. Regulations etc: Any reference to alterations to, or use of, any part of the property does not mean that any necessary planning, building regulations or other consent has been obtained. A buyer must find out by inspection or in other ways that these matters have been properly dealt with and that all information is correct. 5. Fixtures and fittings: A list of the fitted carpets, curtains, light fittings and other items fixed to the property which are included in the sale (or may be available by separate negotiation) will be provided by the Seller's Solicitors. 6. VAT: The VAT position relating to the property may change without notice. 7. To find out how we process Personal Data, please refer to our Group Privacy Statement and other notices at <https://www.knightfrank.com/legals/privacy-statement>.

Particulars dated March 2026. Photographs and videos dated March 2026. All information is correct at the time of going to print. Knight Frank is the trading name of Knight Frank LLP. Knight Frank LLP is a limited liability partnership registered in England and Wales with registered number OC305934. Our registered office is at 55 Baker Street, London W1U 8AN. We use the term 'partner' to refer to a member of Knight Frank LLP, or an employee or consultant. A list of members names of Knight Frank LLP may be inspected at our registered office. If you do not want us to contact you further about our services then please contact us by either calling 020 3544 0692, email to [marketing.help@knightfrank.com](mailto:marketing.help@knightfrank.com) or post to our UK Residential Marketing Manager at our registered office (above) providing your name and address.