

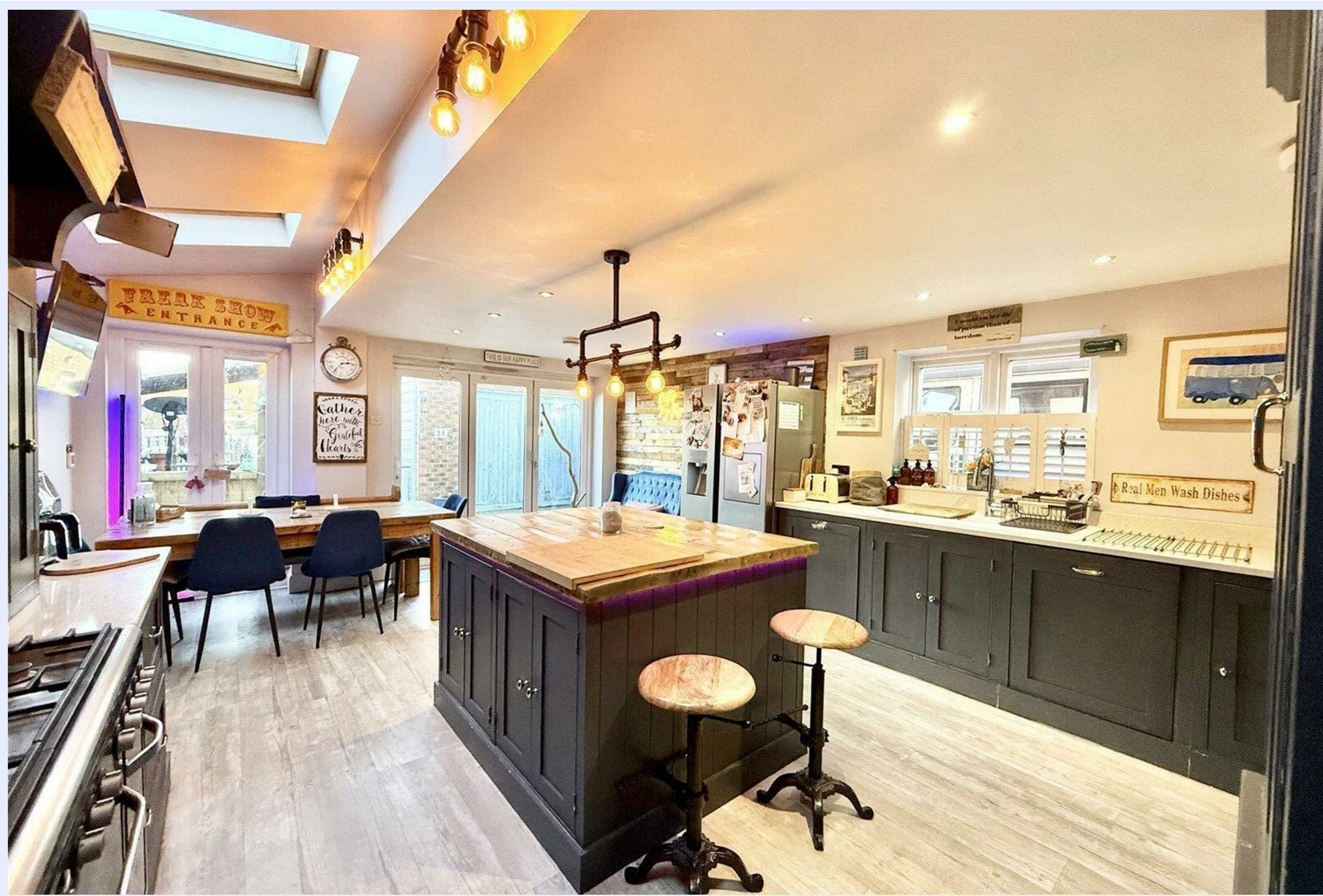


*25 Gordon Road, Christchurch BH23 5HN*

*£569,950*

**Mitchells**

1963 — TODAY



# *Gordon Road, Christchurch*

An attractive and extended Victorian semi-detached family residence enviably positioned in the very heart of Highcliffe-on-Sea, moments from the town centre, clifftop and beach.



## The Property

- Extended character family home
- Four bedrooms
- Four bath/shower rooms (three en-suite & one GF shower/utility room)
- Large master suite with Juliette balcony
- Stunning partially vaulted bespoke kitchen/living space
- Formal sitting room
- Separate study
- Prime town centre and coastal position
- Large garden approx. 80ft in length
- Off-road parking



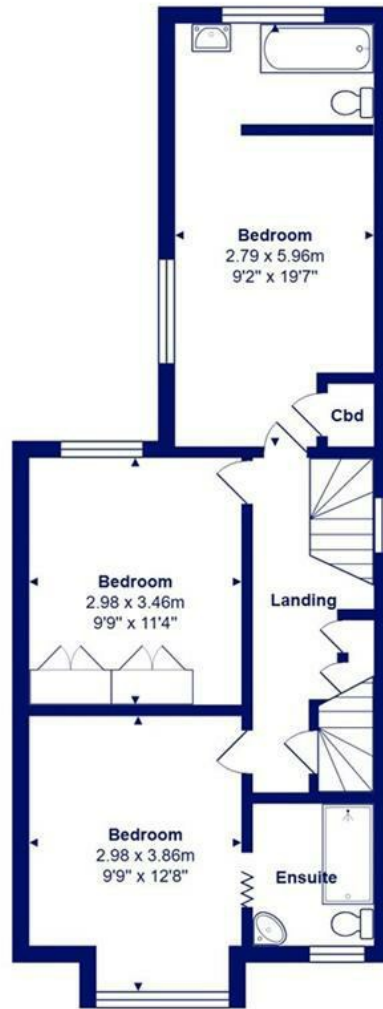


Location

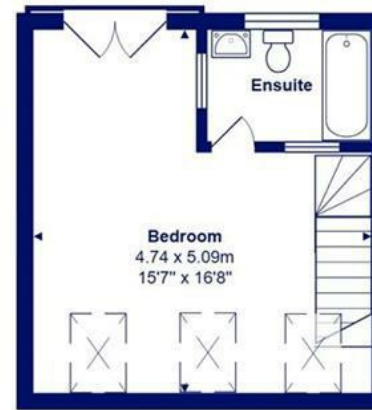




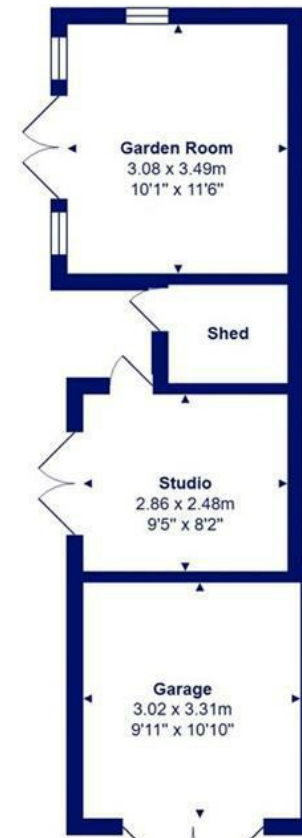
Ground Floor



First Floor



Second Floor



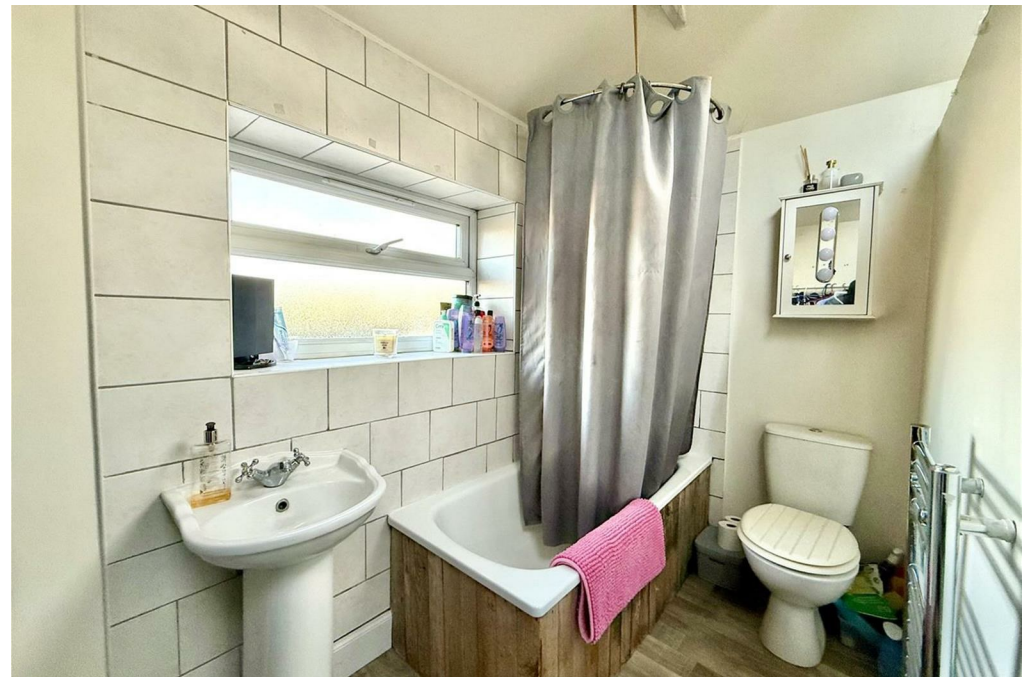
Outbuildings

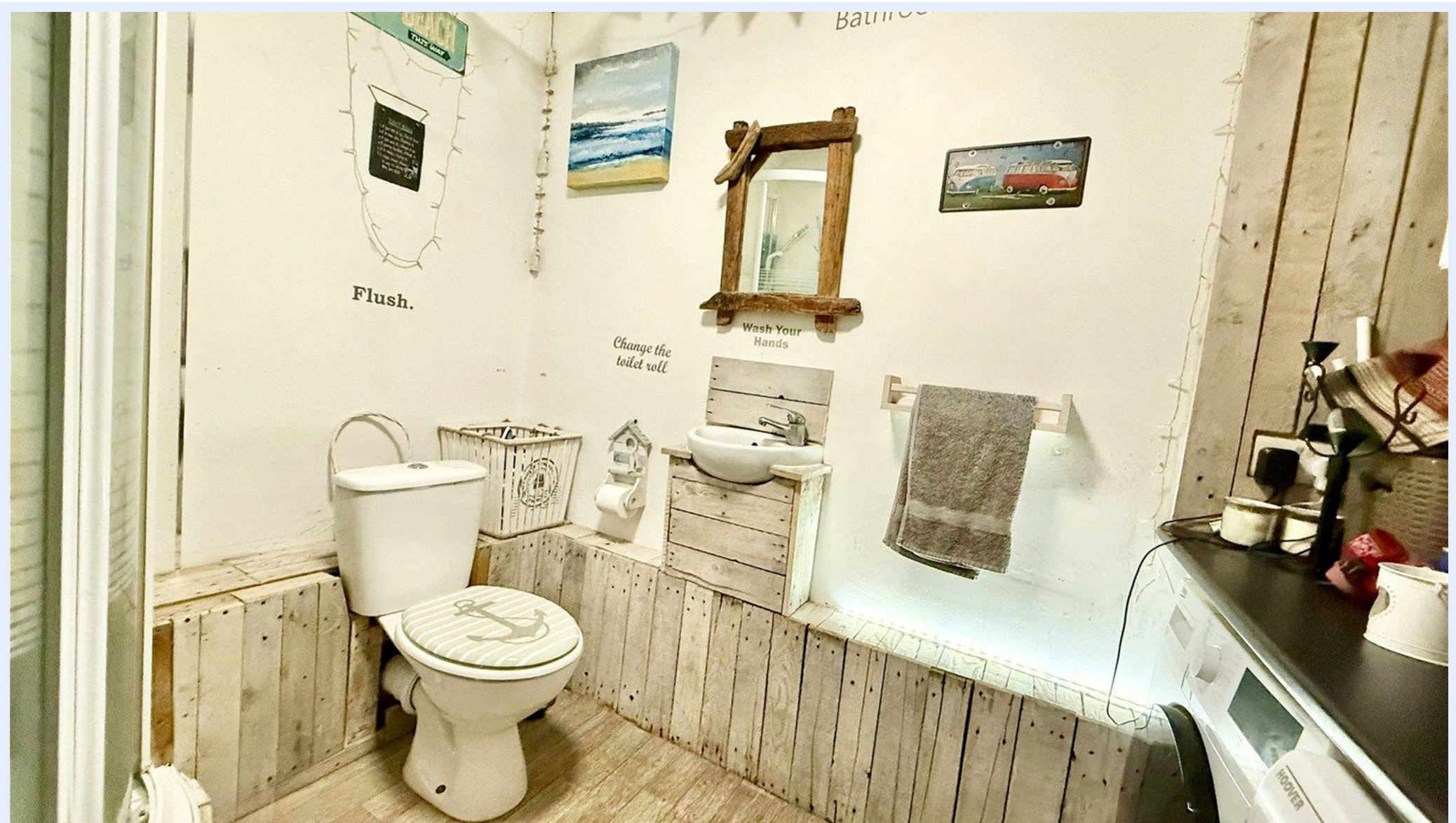


Total Area: 135.7 m<sup>2</sup> ... 1461 ft<sup>2</sup> (excluding outbuildings)

All measurements are approximate and for display purposes only







[www.mitchells.uk.com](http://www.mitchells.uk.com)  
[Highcliffe@mitchells.uk.com](mailto:Highcliffe@mitchells.uk.com)  
01425 272206

Highcliffe  
284 Lymington Road  
Highcliffe  
Christchurch  
BH23 5ET

