



3 Sylvan Drive

Old Tupton, Chesterfield, S42 6HE

£325,000



3 Sylvan Drive

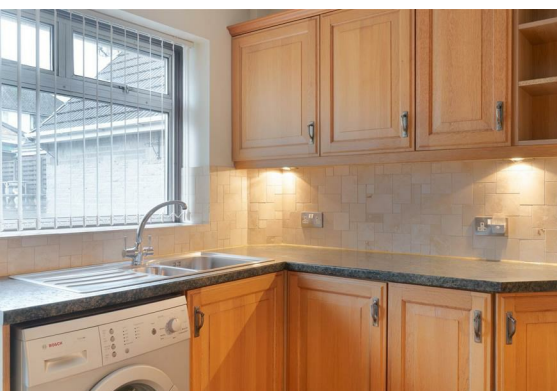
Old Tupton, Chesterfield, S42 6HE

Situated in this quiet cul-de-sac, in the pretty semi-rural village of Old Tupton, located on the outskirts of Chesterfield, close to transport links, amenities and some stunning countryside walks, is this deceptively spacious 2 bedroom detached bungalow, presenting a fantastic opportunity for personalisation.

Offering 1033 sqft of accommodation over 2 storeys, the property features a large social family lounge with open plan dining room, a flexible layout which including a second snug lounge, which could be made into a 3rd bedrooms subject to fire regulations, a ground floor bedrooms and bathroom and a further bedroom on the first floor.

Externally, to the front and side of the property is a large block paved driveway providing ample off road parking for multiple vehicles. To the rear, a low maintenance garden and detached garage.





Floor Plan



Viewing

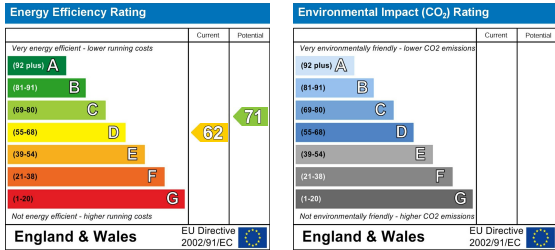
Please contact our Chesterfield Office on 01246 567540 if you wish to arrange a viewing appointment for this property or require further information.

These particulars, whilst believed to be accurate are set out as a general outline only for guidance and do not constitute any part of an offer or contract. Intending purchasers should not rely on them as statements of representation of fact, but must satisfy themselves by inspection or otherwise as to their accuracy. No person in this firms employment has the authority to make or give any representation or warranty in respect of the property.

Area Map



Energy Efficiency Graph



131 Chatsworth Road, Chesterfield, Derbyshire, S40 2AP
T: 01246 567540



E: info@dalesandpeaks.co.uk
www.dalesandpeaks.co.uk