



St Annes Lodge

West Hill

St Anne's
Lodge



St Annes Lodge, West Hill, St Helier, JE2 3HB

Detached four bedroom house, accessed via a private gated driveway and in an elevated position with stunning sea views.

The property underwent complete refurbishment in 2017 by its current owners and has been finished to a very high standard. Internally the ground floor reception space comprises of three excellent rooms, exceptional open plan eat in kitchen with breakfast bar, dining room and spacious lounge. All benefiting from Bi-fold or sliding doors to the extensive sun terraces and views beyond. A separate utility, feature wine storage and study/office complete the ground floor.

On the first floor of the property are two double bedrooms a house bathroom with walk in shower and a bedroom en suite complete with dressing area. The master bedroom suite is on the top floor with an open plan dressing room and access onto a large balcony with enviable sea views.

Externally St Anne's Lodge is surrounded by mature gardens with extensive terrace areas and is very private. There is a lower ground floor basement which is currently utilised as a games room/storage area. Double garage and parking for circa six cars.



4



3



3

Parish: St Helier

Qualification: Qualified

Tenure: Freehold

Price £2,500,000



- Detached four bedroom family home
- Elevated position with sea views
- Totally refurbished in 2017 by current owners
- Mature gardens and very private
- Double garage and parking for circa six cars
- Quietly located just minutes from town













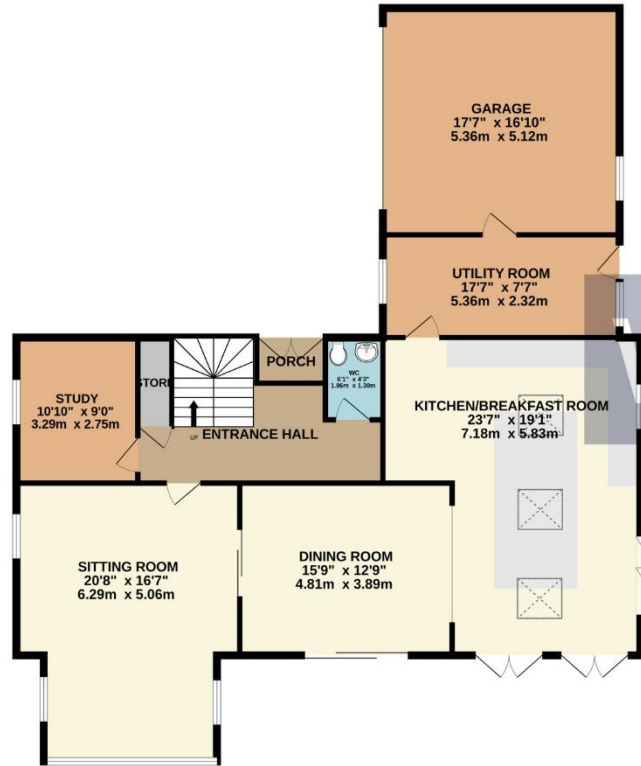




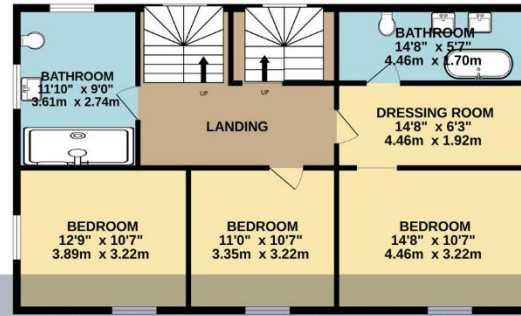




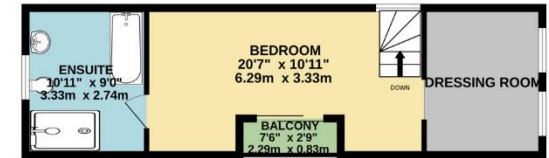
GROUND FLOOR
1623 sq.ft. (150.8 sq.m.) approx.



1ST FLOOR
861 sq.ft. (80.0 sq.m.) approx.



2ND FLOOR
399 sq.ft. (37.0 sq.m.) approx.



TOTAL FLOOR AREA : 2883 sq.ft. (267.8 sq.m.) approx.

Whilst every attempt has been made to ensure the accuracy of the floorplan contained here, measurements of doors, windows, rooms and any other items are approximate and no responsibility is taken for any error, omission or mis-statement. This plan is for illustrative purposes only and should be used as such by any prospective purchaser. The services, systems and appliances shown have not been tested and no guarantee as to their operability or efficiency can be given.

Made with Metropix ©2023

This plan is for layout guidance only. Not drawn to scale unless stated. Windows and door openings are approximate. Whilst every care is taken in the preparation of this plan, please check all dimensions, shapes and compass bearings before making any decisions reliant upon them.

Services

Mains water

Mains drains

OFCH

Gas hob for cooking

Double glazed

UF heating in kitchen dining room and bathrooms

+441534 877977

Knight Frank Jersey

37-39 Halkett Place, St. Helier, Jersey JE2 4WG

knightfrank.je

Your partners in property

1. Particulars: These particulars are not an offer or contract, nor part of one. You should not rely on statements given by Knight Frank Jersey in the particulars, by word of mouth or in writing ("information") as being factually accurate about the property, its condition or its value. Neither Knight Frank Jersey nor any joint agent has any authority to make any representations about the property, and accordingly any information given is entirely without responsibility on the part of Knight Frank Jersey. 2. Material Information: Please note that the material information is provided to Knight Frank Jersey by third parties and is provided here as a guide only. While Knight Frank Jersey has taken steps to verify this information, we advise you to confirm the details of any such material information prior to any offer being submitted. If we are informed of changes to this information by the seller or another third party, we will use reasonable endeavours to update this as soon as practical. 3. Photos, Videos etc: The photographs, property videos and virtual viewings etc. show only certain parts of the property as they appeared at the time they were taken. Areas, measurements and distances given are approximate only. 4. Regulations etc: Any reference to alterations to, or use of, any part of the property does not mean that any necessary planning, building regulations or other consent has been obtained. A buyer must find out by inspection or in other ways that these matters have been properly dealt with and that all information is correct. 5. Fixtures and fittings: A list of the fitted carpets, curtains, light fittings and other items fixed to the property which are included in the sale (or may be available by separate negotiation) will be provided by the Seller's Lawyer. Particulars dated 04/09/2025. All information is correct at the time of going to print.

