



Tanner Street, SE1

£590,000

A highly attractive park-side apartment enjoying a sunny westerly aspect, flooding the interior with natural light. The property features a spacious open-plan living room and kitchen, two well-proportioned double bedrooms, and a large family bathroom complete with both bath and separate shower. Further benefits include two private balconies and a Share of Freehold.

Park West Apartments are enviably located overlooking Tanner Street Park, in the heart of SE1 and both Bermondsey Street and Maltby Street's celebrated food scene, galleries, restaurants & cafés. The South Bank offers iconic riverside walks past Borough Market, Tate Modern & numerous cultural landmarks.

Features

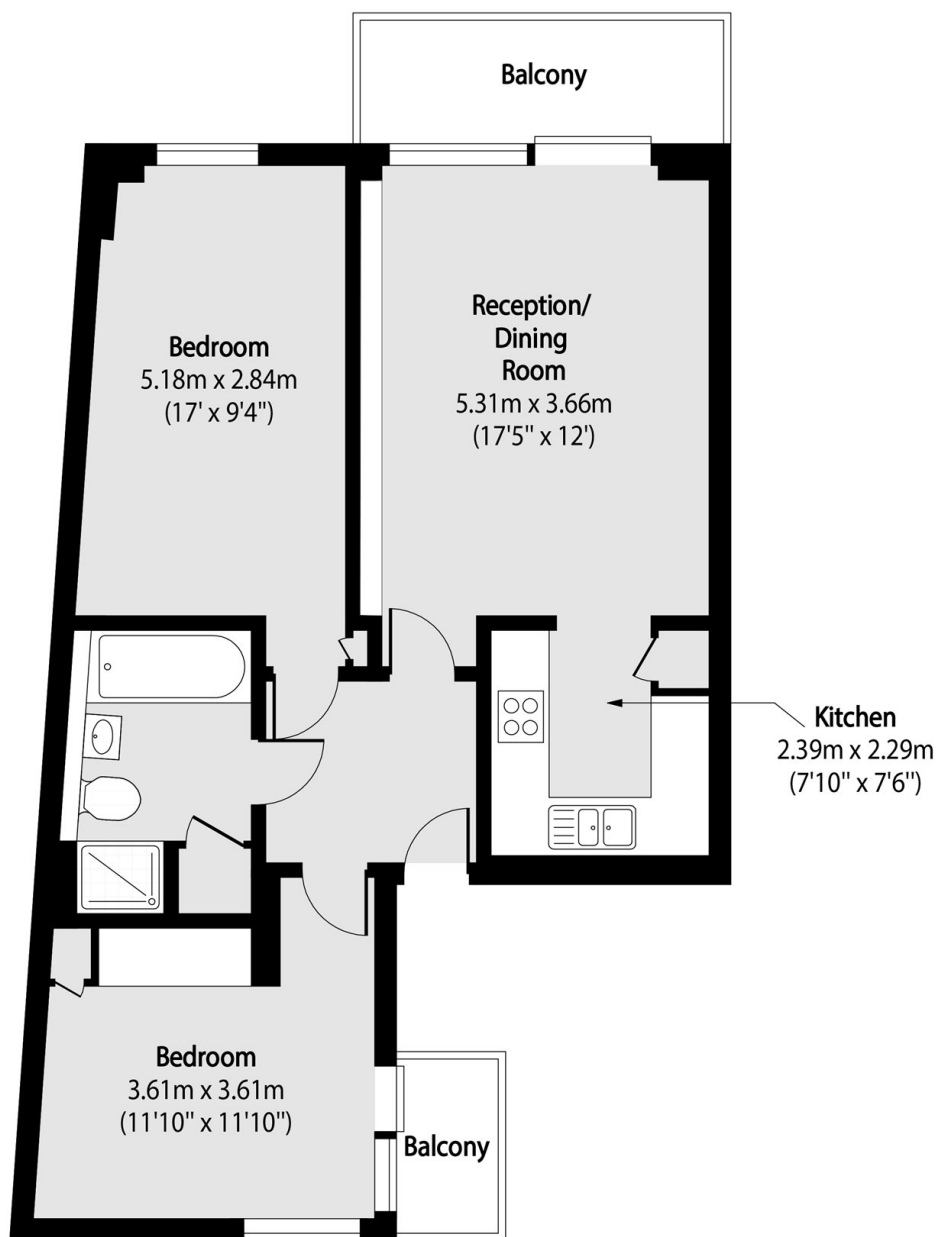
- West-Facing Apartment
- Open Plan Living Space
- Two Double Bedrooms
- Two Private Balconies
- Very Central Location
- Excellent Transport Links



Tanner Street, SE1



Tanner Street, London, SE1



Total area (approx): 60.75 sq m (654 sq. ft)

Balcony total area (approx): 6.87 sq m (74 sq. ft)