



Gloucester Terrace, W2 £800,000

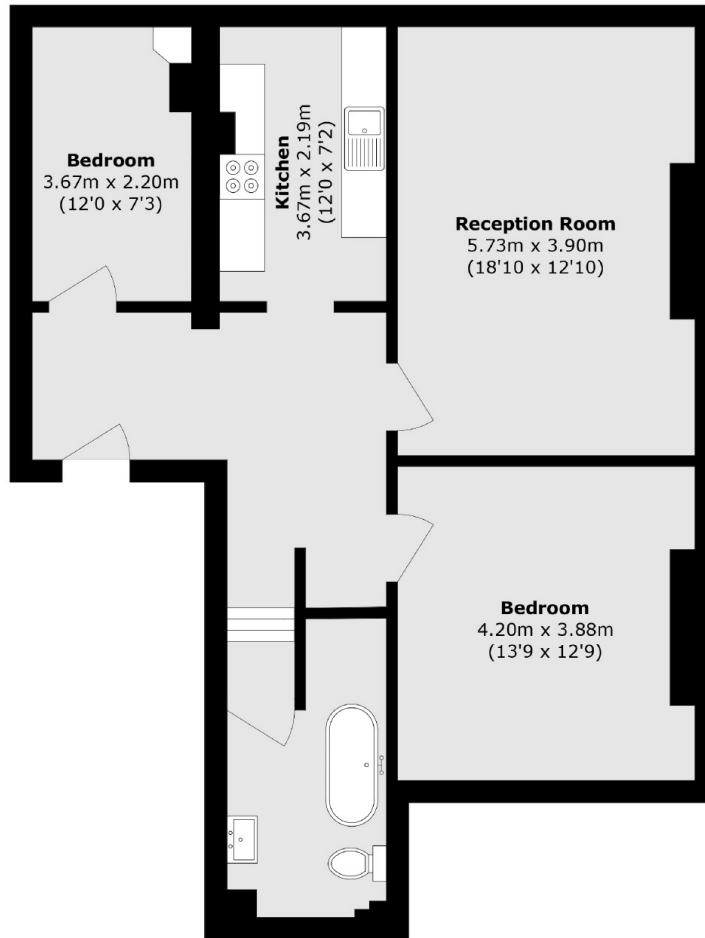
A spacious second floor apartment in a smart white stucco built terraced building. The property is presented to a good standard throughout, with two bedrooms, an open plan reception and dining room and separate kitchen.

Gloucester Terrace is conveniently placed for the facilities and amenities available in Queensway. Lancaster Gate and Paddington stations are also located nearby.

Features

- Two Bedrooms
- Second Floor
- Separate Kitchen
- Victorian Conversion
- Close to Hyde Park
- Share Of Freehold

Gloucester Terrace, London, W2



Total area (approx.): 82.0 sq. m (882.6 sq. ft)