

Forest Edge, Hanham, South Glos, BS15 3PP

£1,900 Per Month

Council Tax Band: D



Welcome to Forest Edge, a delightful recently refurbished three bedroom semi detached home in Hanham. With a modern kitchen and bathroom and new carpets this well maintained property will make an ideal family home. The property also has the advantage of off street parking for several vehicles and a garage. Contact us to arrange a viewing.

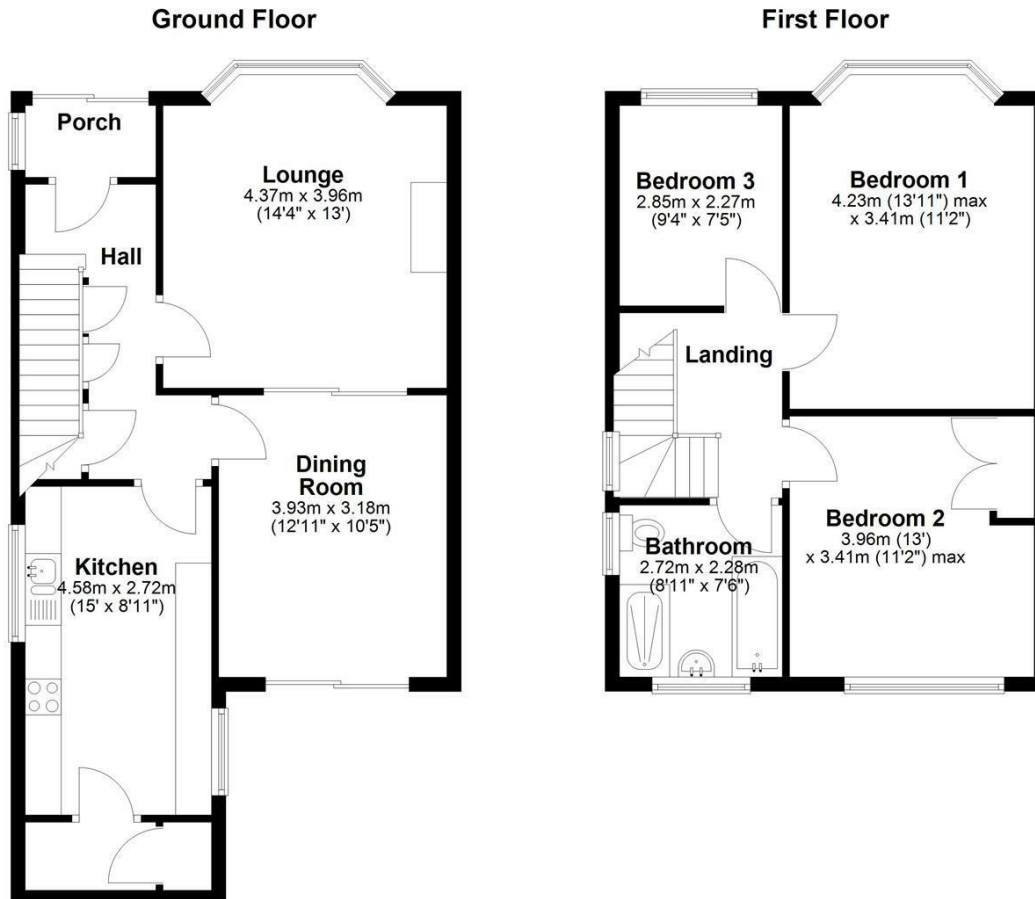
Pets considered.  
Sorry but NO SHARERS.

A combined income in excess of £60,000 pa is required for this property.  
Full referencing and ID checks will apply.

Rent £1900 pcm  
Holding Deposit £435  
Deposit £2190



Open House Bristol North East



Energy Efficiency Rating		Current	Potential
Very energy efficient - lower running costs			
(92 plus)	A		
(81-91)	B		
(69-80)	C		
(55-68)	D	67	
(39-54)	E		
(21-38)	F		
(1-20)	G		
Not energy efficient - higher running costs			
<b>England &amp; Wales</b>		EU Directive 2002/91/EC	