



Guide Price
£230,000

Leasehold

2x  1x  1x 

**Manor Court,
Brockhampton Road,
Havant, Hampshire, PO9**

OVER 60?

Secure this property
for up to **59% less!**

cubitt & west
Helping you move forwards



Main features

- **2 bedroom second floor apartment**
- **Located in the sought after area of Bedhampton**
- **Spacious open plan living**
- **Lounge leads onto a private balcony**
- **Beautiful communal gardens**
- **No age restriction on property**
- **Walking distance to local amenities and transport links**

Accommodation

SECOND FLOOR

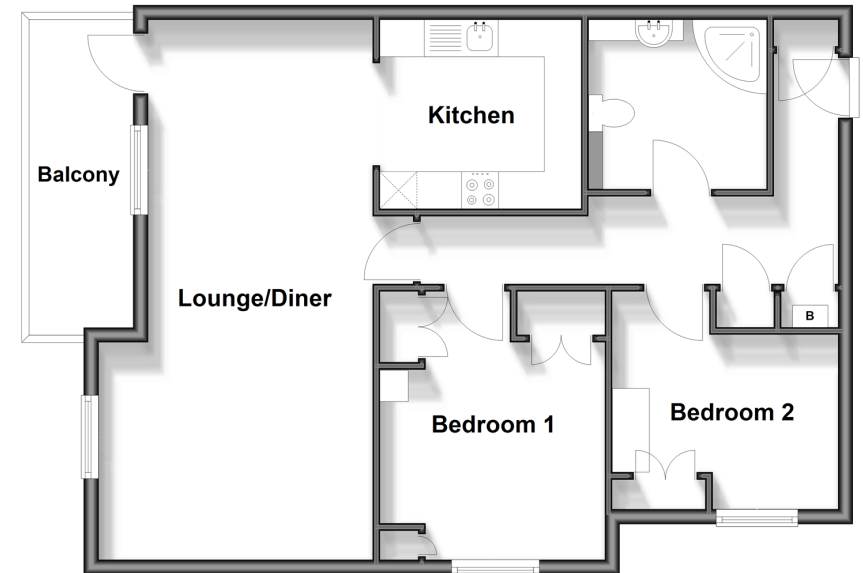
- Hallway
- Lounge/Diner: 21'5 x 12'1 (6.53m x 3.69m)
- Balcony
- Kitchen: 8'6 x 8'3 (2.59m x 2.52m)
- Bedroom 1: 11'9 x 9'9 (3.58m x 2.97m)
- Bedroom 2: 10'1 x 9'1 (3.08m x 2.77m)
- Shower Room

OUTSIDE

- Allocated Parking
- Communal Gardens

Second Floor

Approx. 68.0 sq. metres (732.2 sq. feet)



Call Havant - 023 92492708 ■ cubittandwest.co.uk

■ Legal advice should be taken to verify fixtures/fittings, planning, alterations and/or lease details
 ■ Through a Homewise Home For Life Plan people aged 60+ can secure this property for up to 59% less, by purchasing a Lifetime Lease

■ Appliances & services are untested, dimensions are approximate and floor plans are not to scale



41129555/20251127/DG1/JG