



**Nether Alderley**  
Vale Crescent



# Nether Alderley

## Vale Crescent

£950,000



### The Property

This immaculately presented five-bedroom, three bathroom detached family home has been much improved by the current owners to now provide light, spacious and flexible living accommodation in a contemporary style. Particular mention must be made of the stunning, open plan, Living Dining SieMatic kitchen with Neff appliances, media wall and large pantry cupboard, the master bedroom suite with fitted wardrobes and en-suite shower room as well as the beautifully appointed reception space and bathrooms, incorporating Duravit sanitary ware and Hansgrohe fittings.

Located in a fantastic position, bordering on to woodland and open countryside on the exclusive Alderley Park development, forming part of 'The Serpentine' a beautiful enclave of family homes constructed by renowned house builders PH Homes whilst being ideally positioned for all major network links to the Northwest and beyond. The Alderley Park Estate provides access to hundreds of acres of parkland, woodland, arboretum, walled garden and popular Gastro pub The Churchill Tree.

The property is approached over a block paved, double width driveway, providing ample off-road parking, leading to the front entrance and integral garage with open lawned garden, feature planting and mature hedging. The rear gardens are a lovely feature of the property, being generous in proportions with a private, open aspect over woodland to the rear. Laid to lawn in the with a large, stone flagged patio area that sweeps around the rear of the property providing ample opportunity for alfresco dining and enjoying the lovely aspect.

### Directions

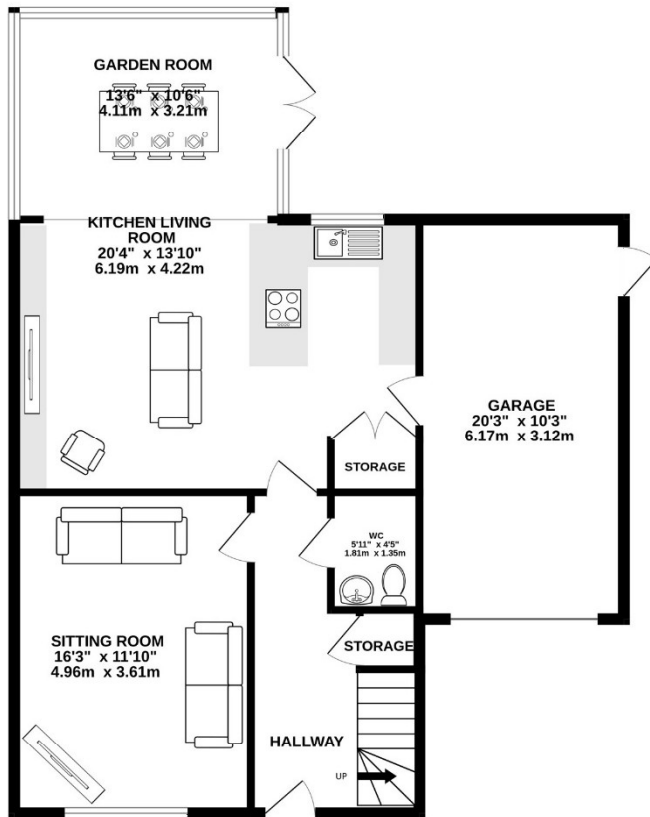
From Knutsford Town Centre pass the rail station on your left onto A537 and continue up Brook Street/Chelford Road for approx. 6.3 miles passing The Dun Cow and Egerton Arms public houses. Take the left turn onto Bollington Lane and left again onto Congleton Road (A34). Turn right into Alderley Park and follow the road passing The Churchill Tree public house turning right onto Churchill Avenue and then left into Vale Crescent.

- Immaculately presented five-bedroom, three-bathroom detached family home
- Premium SieMatic open-plan kitchen with integrated Neff appliances and walk-in pantry
- High-spec bathrooms featuring Duravit sanitary ware and Hansgrohe fittings
- Spacious bedrooms with bespoke fitted wardrobes
- Private, enclosed garden backing onto Woodlands
- Beautifully appointed reception space with media wall
- Garage Space

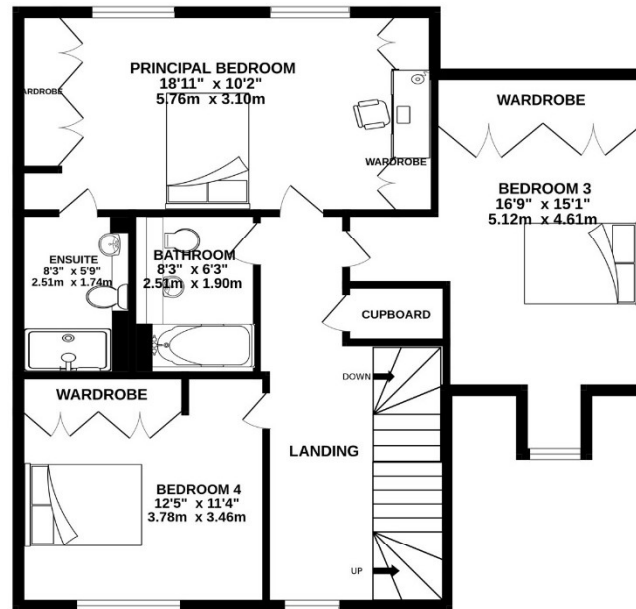
**Postcode** – SK10 4LU  
**Tenure** – Leasehold  
**Local Authority** – Cheshire East  
**Council Tax** – Band G  
**EPC** - B



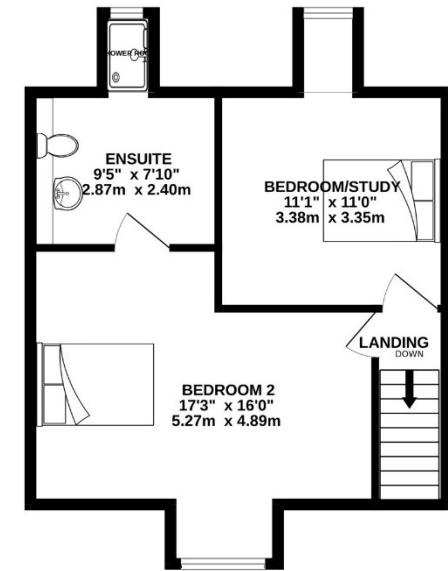
GROUND FLOOR  
961 sq.ft. (89.2 sq.m.) approx.



1ST FLOOR  
811 sq.ft. (75.4 sq.m.) approx.



2ND FLOOR  
475 sq.ft. (44.1 sq.m.) approx.



TOTAL FLOOR AREA : 2246 sq.ft. (208.7 sq.m.) approx.

Whilst every attempt has been made to ensure the accuracy of the floorplan contained here, measurements of doors, windows, rooms and any other items are approximate and no responsibility is taken for any error, omission or mis-statement. This plan is for illustrative purposes only and should be used as such by any prospective purchaser. The services, systems and appliances shown have not been tested and no guarantee as to their operability or efficiency can be given.  
Made with Metropix ©2026

103 King Street, Knutsford, Cheshire, WA16 6EQ  
01565 654 000  
E: [info@irlamsestateagents.co.uk](mailto:info@irlamsestateagents.co.uk)  
[www.irlamsestateagents.co.uk](http://www.irlamsestateagents.co.uk)

Irlams (Estate Agents) Ltd for themselves and for the vendors or lessors of this property whose agents they are give notice that:  
(a) The particulars are set out as a general outline only for the guidance of intending purchasers or lessees, and do not constitute, nor constitute part of, an offer or contract;  
(b) All descriptions, dimensions, references to condition and necessary permissions for use and occupation, and other details are given in good faith and are believed to be correct but any intending purchasers or lessees should not rely on them as statements or representations of fact, but must satisfy themselves by inspection or otherwise as to the correctness of each of them;  
(c) No person in the employment of Irlams (Estate Agents) Ltd has any authority to make or give any representation or warranty whatsoever in relation to this property.  
(d) We believe the information above to be accurate at the point it was obtained however you may wish to make a final check with your Solicitor or with us in respect of anything above you feel crucial before you proceed with the purchase of this property.

