



KINGSLEY MEWS, WAPPING, E1W 2 BED APARTMENT

£2,400 PCM

Two double bedroom apartment situated in a secure gated development in Wapping, benefits include parking.

This well-proportioned apartment comprises of a large reception room, separate kitchen with fully integrated appliances, two double bedrooms, and a modern tiled bathroom.

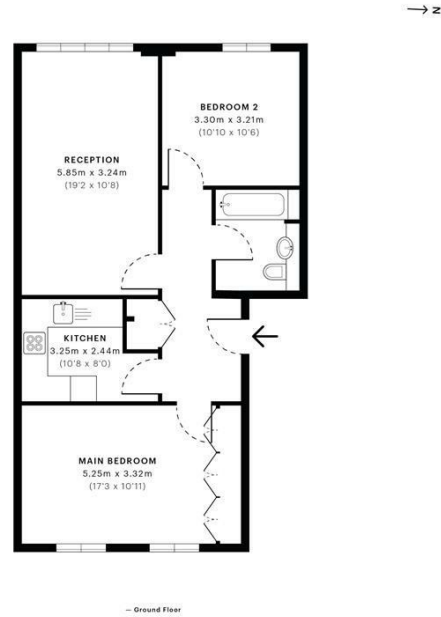
Close to the amenities of Wapping High Street, the City and Shoreditch, with the River Thames and St Katharine Docks within walking distance. The nearest stations are Wapping, Tower Gateway & Shadwell.

Offered furnished or unfurnished

Hemmingfords

Kingsley Mews, E1W
 CAPTURE DATE: 14/06/2021 LASER SCAN POINTS: 1,297,482

GROSS INTERNAL AREA
 69.83 sqm / 751.64 sqft



GROSS INTERNAL AREA (GIA)
 The footprint of the property
 69.83 sqm / 751.64 sqft

NET INTERNAL AREA (NIA)
 Excludes walls and external features
 Excludes swimming pools, covered terraces
 66.64 sqm / 717.31 sqft

EXTERNAL STRUCTURAL FEATURES
 Balconies, terraces, verandas, etc.
 0.00 sqm / 0.00 sqft

RESTRICTED HEAD HEIGHT
 Limited use area under 1.9m
 0.00 sqm / 0.00 sqft

Spec Verified floor plans are produced in accordance with Royal Institution of Chartered Surveyors' Property Measurement Standards. Pits and gardens are illustrative only and excluded from all area calculations. Due to rounding, numbers may not add up precisely. All measurements shown for the individual room lengths and widths are the maximum points of measurements captured in the scan.

IPRS RESIDENTIAL: 71.13 sqm / 765.84 sqft
 IPRS AC RESIDENTIAL: 67.66 sqm / 727.52 sqft
 spec id: 60c32c7f5333a6c0d68b8f0f5



Energy Efficiency Rating		Current	Potential
Very energy efficient - lower running costs			
(92 plus) A			
(81-91) B			
(69-80) C			
(55-68) D			
(39-54) E			
(21-38) F			
(1-20) G			
Not energy efficient - higher running costs			
England & Wales		EU Directive 2002/91/EC	

Agents Note: Whilst every care has been taken to prepare these particulars, they are for guidance purposes only. All measurements are approximate and are for general guidance purposes only and whilst every care has been taken to ensure their accuracy, they should not be relied upon and potential buyers/tenants are advised to recheck the measurements

Hemmingfords Lettings
 34 Upper Street
 London
 N1 0PN

020 3890 7470
 info@hemmingfords.co.uk
 www.hemmingfords.co.uk

Hemmingfords