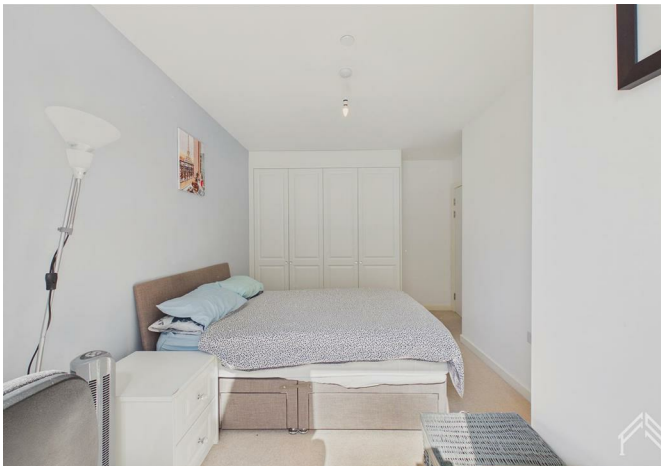




655 Marathon House, Olympic Way, Wembley, HA9 0GE
£2,000 Per month





655 Marathon House, Olympic Way, Wembley, HA9 0GE

£2,000 Per month

Spacious One-Bedroom Apartment | Furnished | On-Site Gym & Concierge.

A brand-new, beautifully presented one-bedroom apartment offering generous proportions that exceed the local average, making this an exceptional find for those seeking space, comfort, and convenience.

The apartment benefits from ample built-in storage throughout and is available fully furnished to suit your needs. Bright, modern, and thoughtfully designed, the layout makes the most of every square foot.

Residents enjoy access to a professionally managed building with first-class amenities, including an on-site gym with complimentary access reserved exclusively for residents, plus a dedicated concierge service for added security and peace of mind.

Early viewing is highly recommended to appreciate the space and lifestyle on offer.

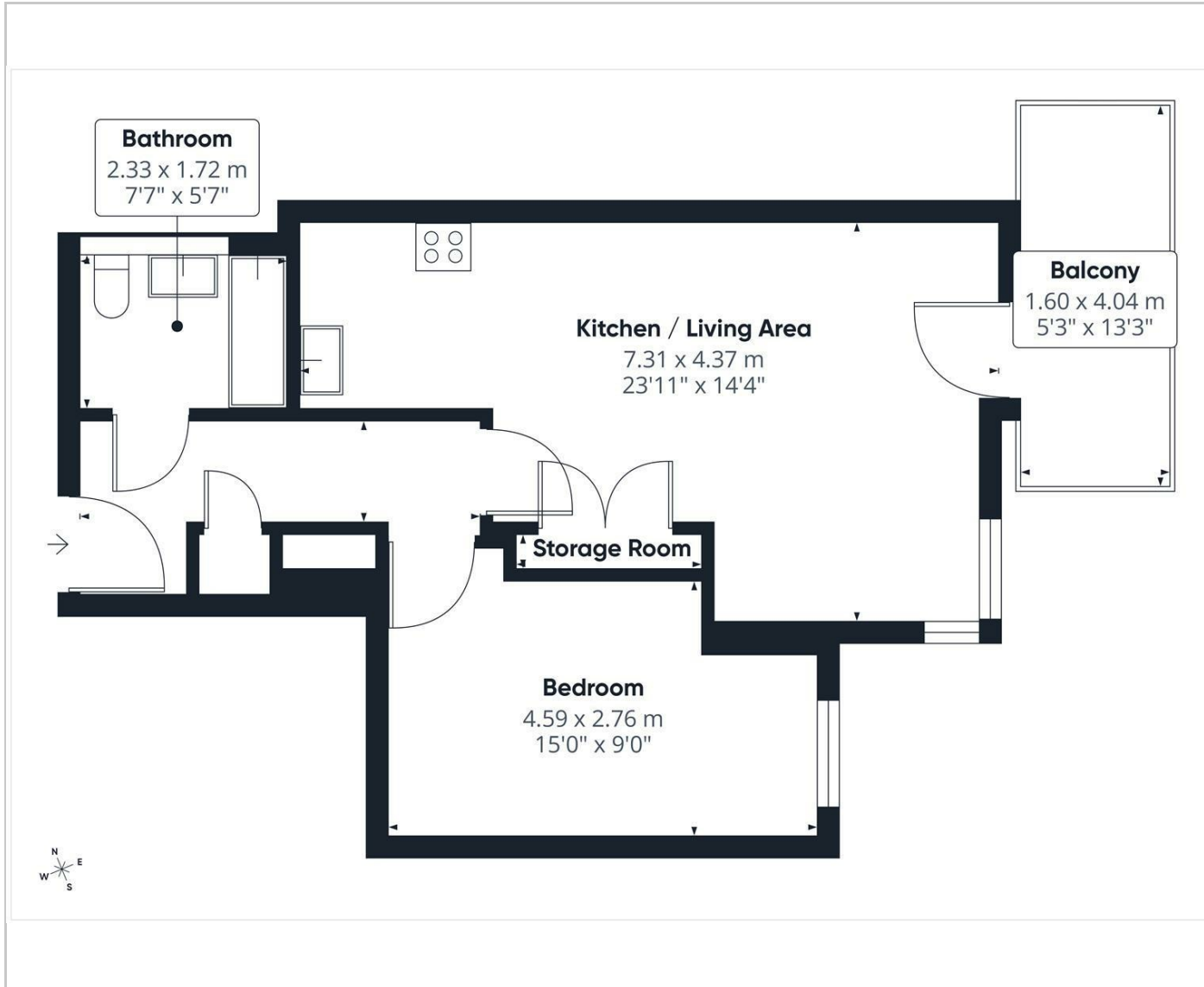
Description

Situation

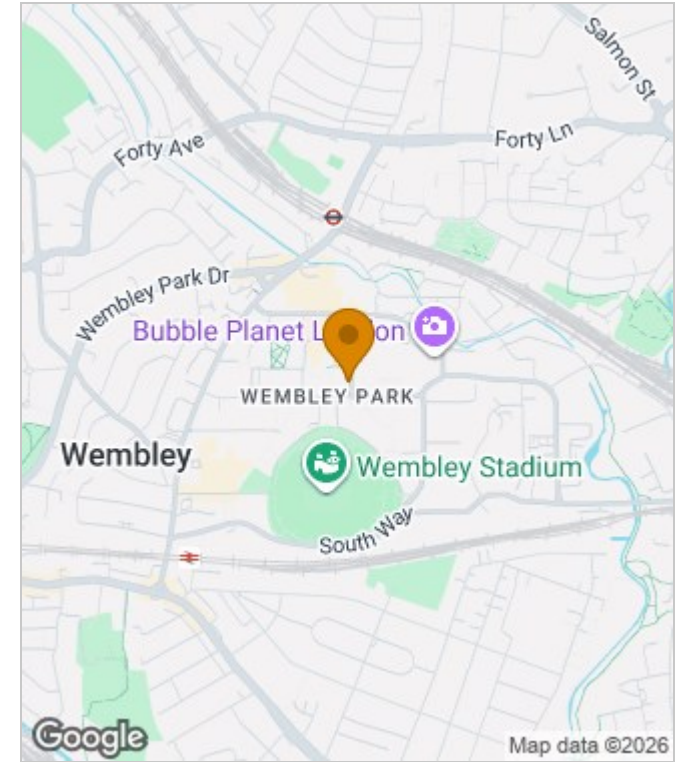
Furnished
Council Tax Band: C
Available:



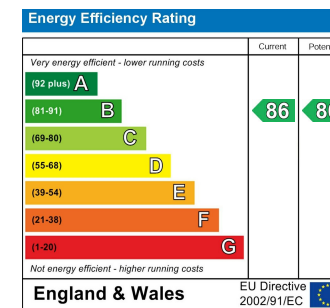
Floor Plans



Area Map



Energy Performance Graph



These particulars, whilst believed to be accurate are set out as a general outline only for guidance and do not constitute any part of an offer or contract. Intending purchasers should not rely on them as statements of representation of fact, but must satisfy themselves by inspection or otherwise as to their accuracy. No person in this firm's employment has the authority to make or give any representation or warranty in respect of the property.