



Park Street  
London, W1K

CHESTERTONS





A superbly presented one bedroom first floor flat situated on Park Street with lift access, this flat benefits from high ceilings, floor to ceiling windows flooding the rooms with natural light.

- Lift
- Bright
- Balcony
- High ceiling
- Floor to ceiling windows
- Ample bedroom storage

### £5,000 pcm

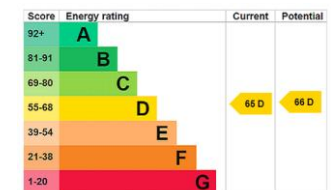
Additional tenant charges apply (fees apply to non-AST tenancies only)

Tenancy Agreement Fee: £300

References per Tenant/Guarantor: £60

Inventory check (approx. £100 – £250 inc. VAT)

[chestertons.co.uk/property-to-rent/applicable-fees](http://chestertons.co.uk/property-to-rent/applicable-fees)



**Minimum Term:** 12 months  
**Deposit Required:** £6,923.08  
**Local Authority:** City of Westminster  
**Council Tax Band:** F  
**EPC Rating:** D  
**Furnished**

### Chestertons Mayfair Lettings

47 South Audley Street

Mayfair

London

W1K 2QA

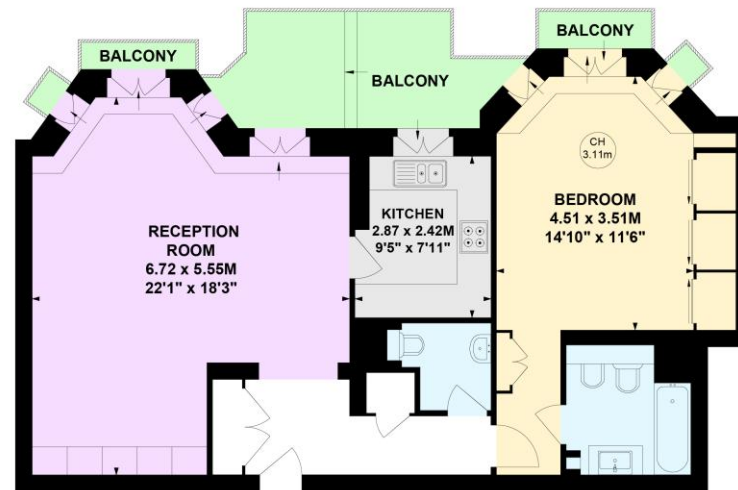
[mayfairlettingsusers@chestertons.co.uk](mailto:mayfairlettingsusers@chestertons.co.uk)

020 7288 8301

# Park Street, W1K

Approximate gross internal area  
77.72 sq m / 836 sq ft

Key :  
CH - Ceiling Height



First Floor

Not to scale, for guidance only and must not be relied upon as a statement of fact.  
All measurements and areas are approximate only

Chesterton UK Services Limited trading as Chestertons for themselves and for the vendor of this property whose agents they are, give notice that (i) these particulars do not constitute any part of an offer or contract, (ii) all statements contained within these particulars are made without responsibility on the part of Chestertons or the vendor, (iii) whilst made in good faith, none of the statements contained within these particulars are to be relied upon as a statement or representation of fact, (iv) any intending purchasers must satisfy themselves by inspection or otherwise as to the correctness of each of the statements contained within these particulars, (v) the vendor does not make or give either Chestertons or any person in their employment any authority to make or give representation or warranty whatsoever in relation to this property. Wide angle lenses may be used. ©Copyright Chestertons | Chesterton Global Ltd | Registered Office 40 Connaught Street, Hyde Park, London W2 2AB Registered Company Number 05334580.



This paper is  
100% recyclable