



PENZANCE STREET



Penzance Street, W11

A stunning period freehold house benefitting from a lovely secluded south-east-facing garden. The home provides stylish open-plan living with a large reception space leading to the kitchen/dining room which provides access to the garden. The first floor provides a fabulous principal bedroom suite with en-suite bathroom, there are two further double bedrooms and two further bathrooms. The bedroom on the second floor has an additional mezzanine level, great for a kids play area. Penzance Street runs off the beautiful St James Gardens, and the house has access to the private communal garden square. The amenities of Holland Park and Clarendon Cross are very close by, as is Holland Park Underground station for the Central Line.

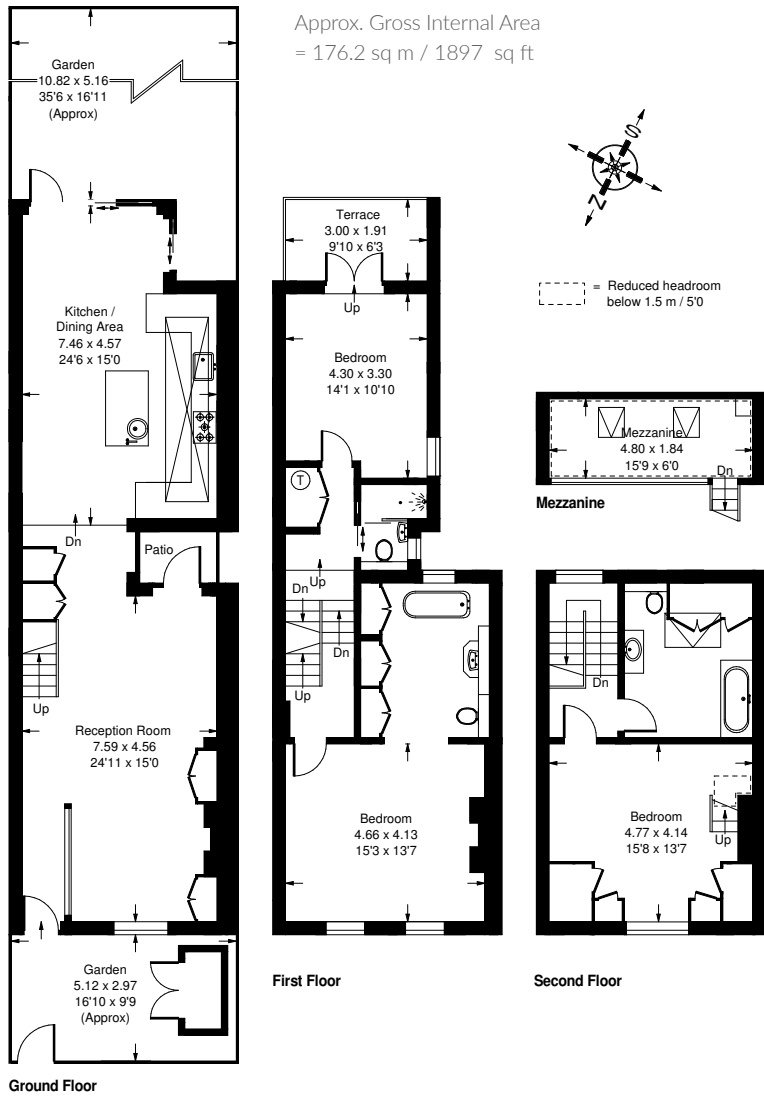












Penzance Street, W11 - Freehold
Local Authority - Royal Borough of Kensington & Chelsea

- Three bedrooms
- Three bathrooms
- Garden
- Terrace
- St James Garden access
- Council Tax Band: F
- EPC Rating: D



Whilst every attempt has been made to ensure the accuracy of the floor plan, measurements are approximate and not to scale. No guarantee is given on the total square footage of the property quoted on the plan. Figures given are for guidance. Plan is for illustration purposes only, not to be used for valuations.