



FURNIVAL MANSIONS, WELLS STREET, W1T

2 BED APARTMENT

£2,600 PER MONTH

A Hemmingfords Collection: With the living room converted in to a second bedroom, we offer this two bedroom apartment situated in a highly desirable location just off Oxford Street. This smart apartment is situated on the raised ground floor, comprises of a separate kitchen with modern integrated appliances, two double bedrooms and a modern tiled three piece bathroom.

Wells Street is located just off Mortimer Street where shops and amenities are on your door step. Oxford Circus (Victoria, Central and Bakerloo Line) and Goadge Street (Northern Line) are within a few minutes walk.

Hemmingfords

Furnival Mansions, W1T

Approximate Gross Internal Area
400 sq ft / 37.16 sq m

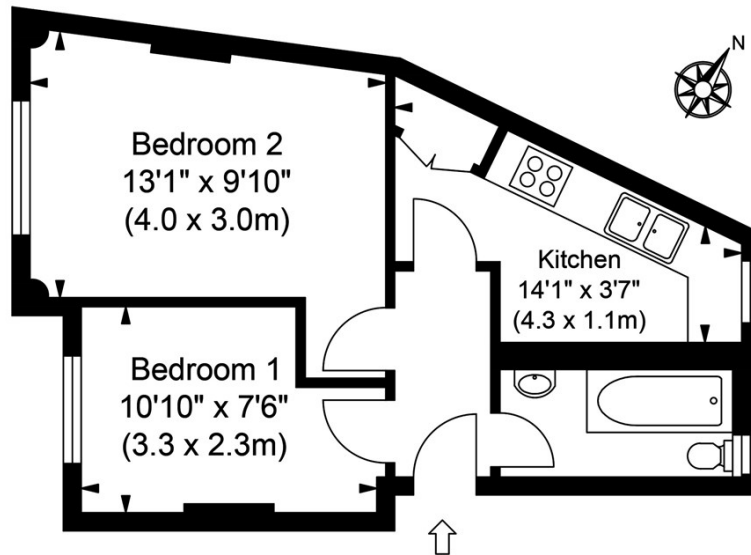


ILLUSTRATION FOR IDENTIFICATION PURPOSES ONLY

ALL MEASUREMENTS ARE MAXIMUM, AND INCLUDE WINDOW BAYS AND WARDROBES WHERE APPLICABLE
THIS PLAN MUST NOT BE REPRODUCED BY ANY OTHER PERSON WITHOUT PERMISSION



Energy Efficiency Rating		Current	Potential
Very energy efficient - lower running costs			
(92 plus) A			
(81-91) B			
(69-80) C		73	81
(55-68) D			
(39-54) E			
(21-38) F			
(1-20) G			
Not energy efficient - higher running costs			
England & Wales		EU Directive 2002/91/EC	

Agents Note: Whilst every care has been taken to prepare these particulars, they are for guidance purposes only. All measurements are approximate and are for general guidance purposes only and whilst every care has been taken to ensure their accuracy, they should not be relied upon and potential buyers/tenants are advised to recheck the measurements

Hemmingfords Lettings
34 Upper Street
London
N1 0PN

020 3890 7470
info@hemmingfords.co.uk
www.hemmingfords.co.uk

Hemmingfords