



9-10, Grosvenor Hill,
Mayfair, W1K

£4,200 Per Week,

NAPIER WATT

T: 0207 935 0011
E: enquiries@napierwatt.co.uk
W: napierwatt.co.uk

35 Berkeley Square, Mayfair, London, W1J 5BF







Description

We proudly present this stunning two bedroom apartment in the heart of Mayfair. The apartment comprises an interconnecting living room and dining room, a stylish eat-in kitchen, guest cloakroom and two double bedrooms, both with en-suite bathrooms. Alongside the bespoke fixtures and fittings is a state of the art Crestron home control system offering access to lighting, security, underfloor heating, comfort cooling and media / audio visual systems controlled via an iPad. The apartment has been fitted with LED televisions and an Aqua Television in the master en-suite; there are also ceiling speakers in all primary rooms. The apartment benefits from a spectacular private decked roof terrace to the rear and is moments from exclusive amenities, including world-class shops, bars and restaurants. Hyde Park is within a short stroll. Nearby Underground stations include Bond Street and Green Park.

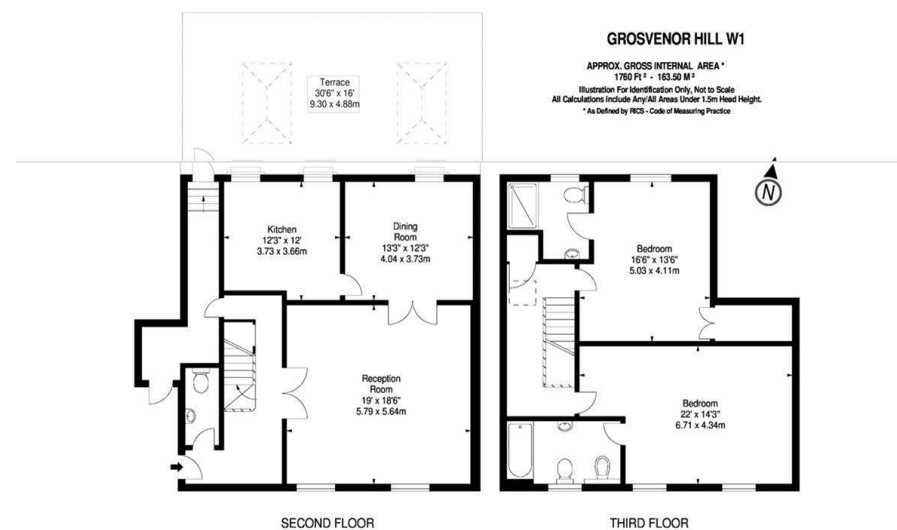
2 Bedrooms : 2 Bathrooms : Guest WC : 2 Receptions : Roof Terrace : EPC Rating E : Council Tax Band H

Key Features

- COMFORT COOLING
- LIFTS
- UNDERFLOOR HEATING
- ROOF TERRACE
- LUXURY
- CLOSE TO BOND STREET AND GREEN PARK

Terms

Fees & Charges: Tenancies exceeding £100,000 Per annum £480 inc VAT, Tenancies where a company is a tenant £480 Inc VAT.



IMPORTANT: We would inform prospective purchasers that these sales particulars have been prepared as a general guide only. A detailed survey has not been carried out, nor the services, appliances and fittings tested. Room sizes should not be relied upon for furnishing purposes and are approximate. If floor plans are included, they are for guidance only and illustration purposes only and may not be to scale. If there are any important matters likely to affect your decision to buy, please contact us before viewing the property.