



# Wilbury Crescent

Hove, BN3 6FL

**Guide price £650,000**

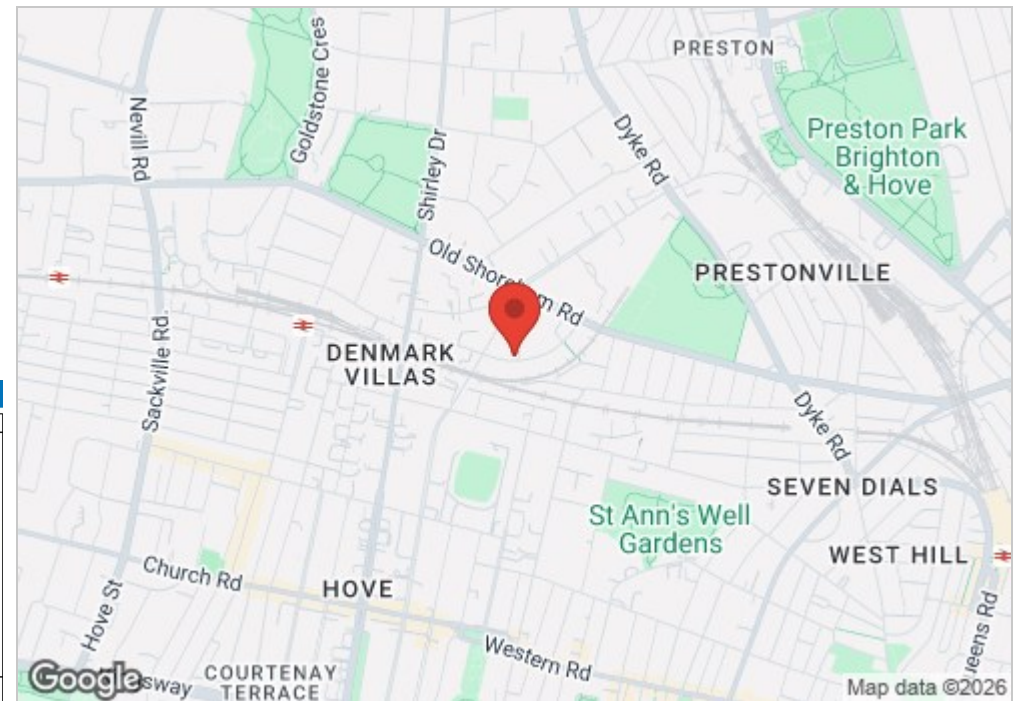
GUIDE PRICE £650,000 - £675,000

Spanning an impressive 1,624 sq ft, this substantial six-bedroom maisonette offers exceptional space rarely found in today's market. Arranged over generous levels, the property provides versatile accommodation ideal for large families, multi-generational living, or investors seeking strong rental potential.

Each bedroom is well-proportioned, complemented by expansive living areas that create a real sense of openness throughout. The layout has been thoughtfully designed to maximise both comfort and practicality, with ample room for entertaining, working from home, and everyday family life.

The property benefits from a good size private garden which is mainly laid to lawn with some attractive planting.

Combining size, flexibility, and excellent living space, this is a rare opportunity to acquire a truly spacious maisonette with the feel of a house.



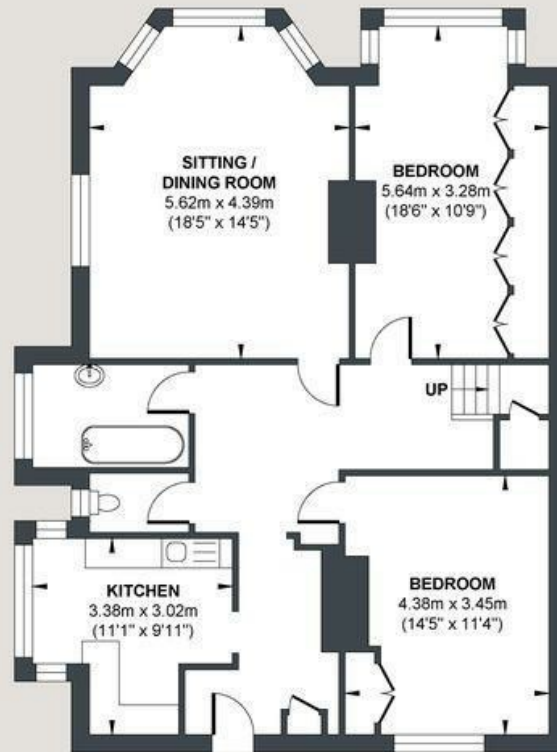
- Maisonette
- 2 bathrooms
- Private Street Entrance
- Chain Free
- Share Of Freehold
- 6 bedrooms
- Garden
- Kitchen
- 1624 SqFt

Energy Efficiency Rating	
	Potential
Very energy efficient - lower running costs	
(92 plus) <b>A</b>	
(81-91) <b>B</b>	
(69-80) <b>C</b>	
(55-68) <b>D</b>	
(39-54) <b>E</b>	
(21-38) <b>F</b>	
(1-20) <b>G</b>	
Not energy efficient - higher running costs	
Current: <b>54</b>	Potential: <b>72</b>
EU Directive 2002/91/EC	
England & Wales	

# WILBURY CRESCENT

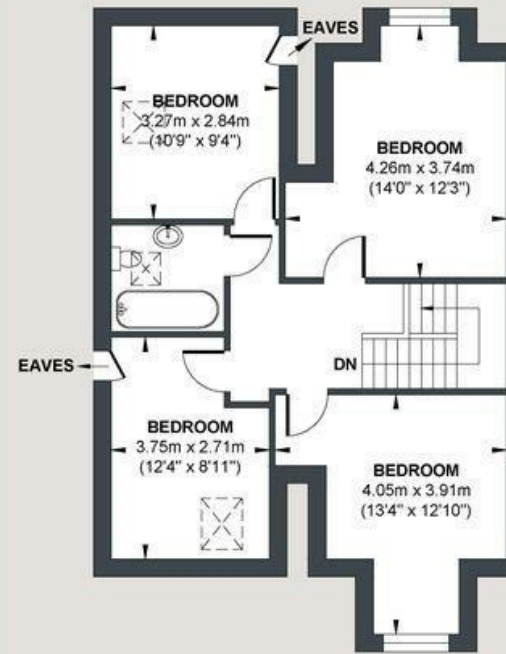
Approx. Gross Internal Floor Area = 150.96 sq m / 1624.92 sq ft

Illustration for identification purposes only, measurements are approximate, not to scale.



FIRST FLOOR

Approximate Floor Area  
1009.12 sq ft  
(93.75 sq m)



SECOND FLOOR

Approximate Floor Area  
615.80 sq ft  
(57.21 sq m)



Foster & Co and their clients give notice that:

These sales particulars do not constitute any part of an offer of contract and are for guidance for prospective purchases only and should be not relied upon as a statement of fact.

We are not to be held responsible for material information that has not been given to us by our client at the time of marketing.

All measurements are approximate



