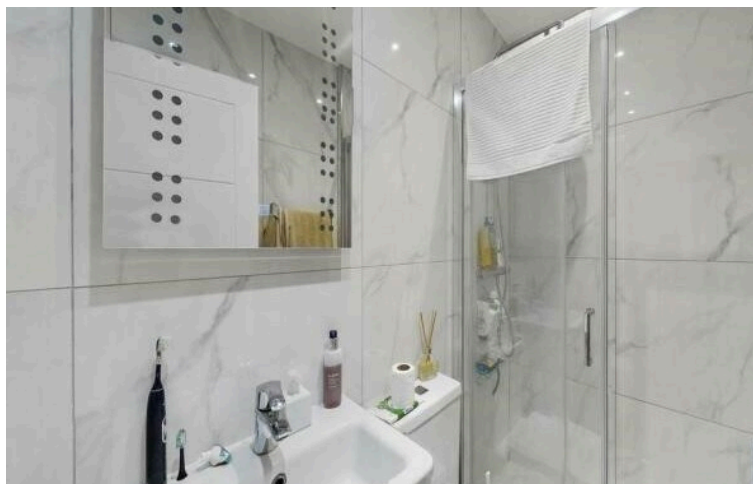
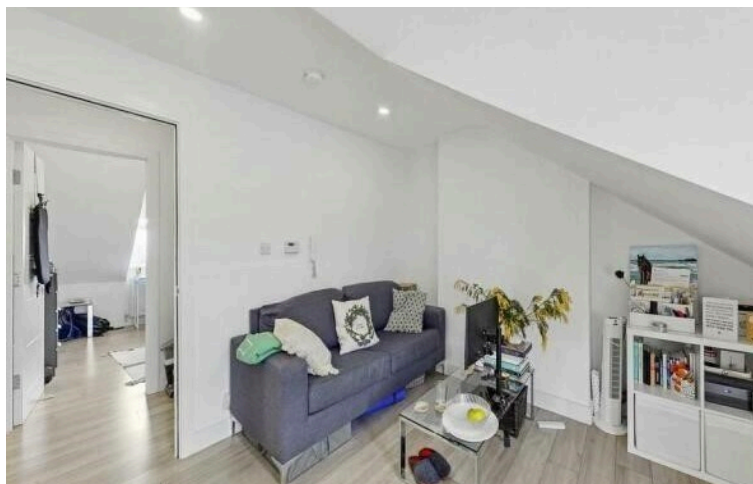


Ferme Park Road, London, United Kingdom, N4

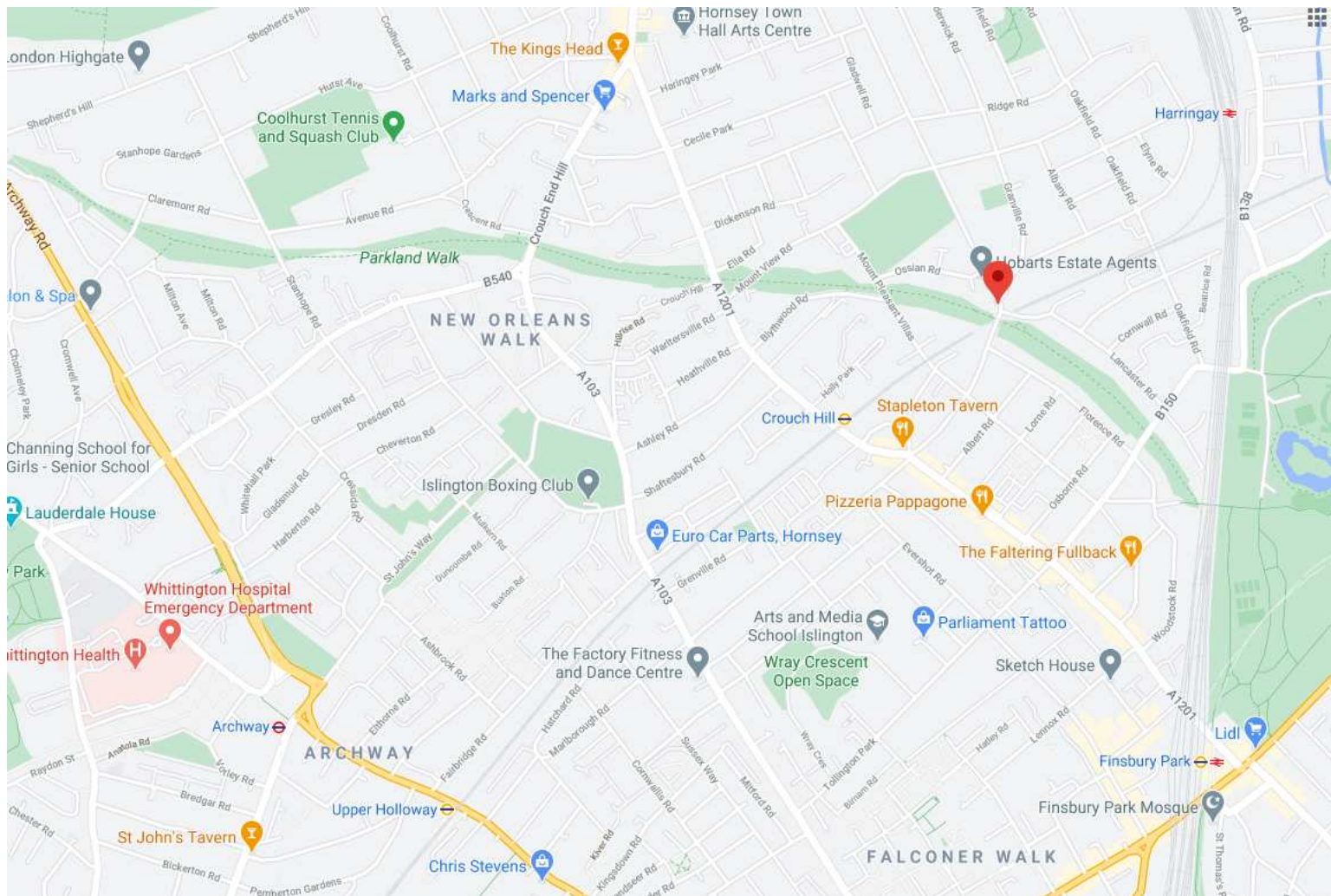
£1,800 pcm

Top-floor, one-bedroom apartment in a charming period building on Ferme Park Road, with a sleek open-plan kitchen/lounge and modern shower room. Features include new double-glazed windows, wood-effect flooring, stylish appliances, and handy hallway storage. Ideally located with shops and the W3 bus on your doorstep, Stroud Green and Crouch End Broadways nearby, and excellent transport links just minutes away – Harringay and Crouch Hill Overground stations, plus Finsbury Park tube only a 15-minute walk.

Hobarts Estate Agents
23 Ferme Park Road, Stroud Green, London, N4 4DS
stroudgreen@hobarts.co.uk
www.hobarts.co.uk
442083429000



- One double bedroom
- Recently converted
- Modern shower room
- Shopping and busses on your doorstep
- Finsbury Park tube 15 minutes walk
- Top floor
- Open plan reception to kitchen
- Furnished or Unfurnished
- Harringay and Crouch Hill over ground nearby





Energy Efficiency Rating		
	Current	Potential
Very energy efficient - lower running costs		
(92+) A		
(81-91) B		
(69-80) C	75	75
(55-68) D		
(39-54) E		
(21-38) F		
(1-20) G		
Not energy efficient - higher running costs		
England, Scotland & Wales		
EU Directive 2002/91/EC		

Address: Ferme Park Road, London, United Kingdom, N4

Tenure:

Ground rent:

Service Charges:

Local Authority:

Viewings:

Strictly by appointment via
HOBARTS ESTATE AGENTS
442083429000

Contact:

23 Ferme Park Road, Stroud
Green, London, N4 4DS

stroudgreen@hobarts.co.uk
www.hobarts.co.uk

rightmove

PrimeLocation.com

homes24.co.uk

Zoopla.co.uk

propertyfinder.com



These property details, including measurements, floor plans and items depicted in photographs etc. are intended only as a brief guide to prospective purchasers and are not intended to be relied upon for any purpose whatsoever. Any interested party should satisfy themselves by inspection or otherwise as to the correctness of each statement contained in these details.