

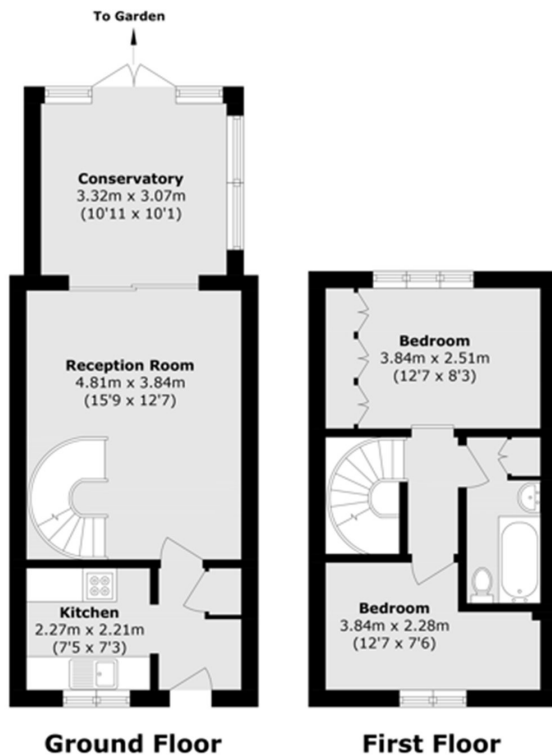


CLAIRE PLACE, E14

£550,000

Set within a private gated development is this split level two-bedroom freehold house, situated in the heart of the Isle of Dogs. The property features ample natural lighting and a spacious conservatory which leads to a private garden. The property comes with a garage and a parking space included.

- 711 square feet
- Two bedroom
- Freehold house
- Parking available
- Private garden
- Chain free



Total area (approx.): 66.1 sq. m (711.5 sq. ft)

LiFE RESIDENTIAL

36 Millharbour, London, E14

9JS

Sales: 020 3668 1033

Lettings: 020 3668 1030

Energy Rating: . We aim to make our particulars both accurate and reliable. However they are not guaranteed; nor do they form part of an offer or contract. If you require clarification on any points then please contact us, especially if you're traveling some distance to view. Please note that appliances and heating systems have not been tested and therefore no warranties can be given as to their good working order.