



Stoneacre
Properties



Dawlish Mount, Leeds, LS9 9DZ
Offers Over £160,000

Stoneacre Properties are delighted to offer for sale this well presented three bedroom mid terrace property. This lovely home would be an ideal purchase for a first time buyer or investor. Located in East End Park so boasts easy access to Leeds City Centre. Comprising: entrance, lounge, kitchen, three bedrooms and bathroom. Externally there is a garden to the front and a spacious low maintenance garden to the rear. Viewings are highly recommended. NO CHAIN.

Entrance

Staircase leading to first floor. Door into living room.

Lounge



To the front is a window. Feature fire place.

Kitchen



Fitted with a range of wall and base units with work surfaces over incorporating a sink and drainer unit. Door to rear. Window to rear.

First Floor Landing

Access into all room.

Bedroom One



To the front is a window. Built in wardrobes with feature lighting.

Bedroom Two



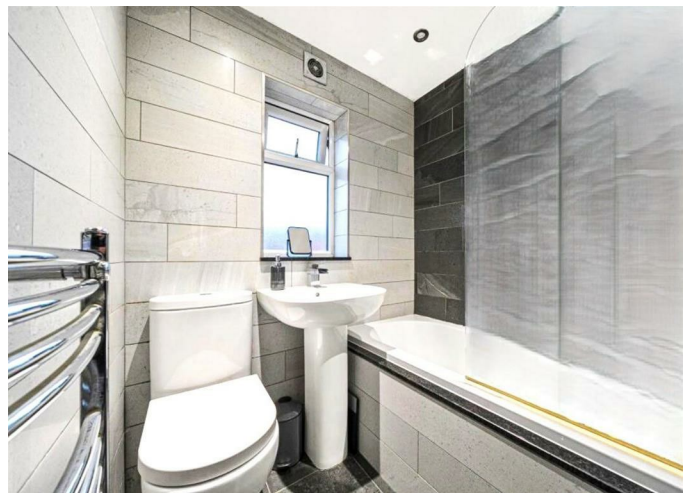
Window to rear.

Bedroom Three



Window to front.

Bathroom



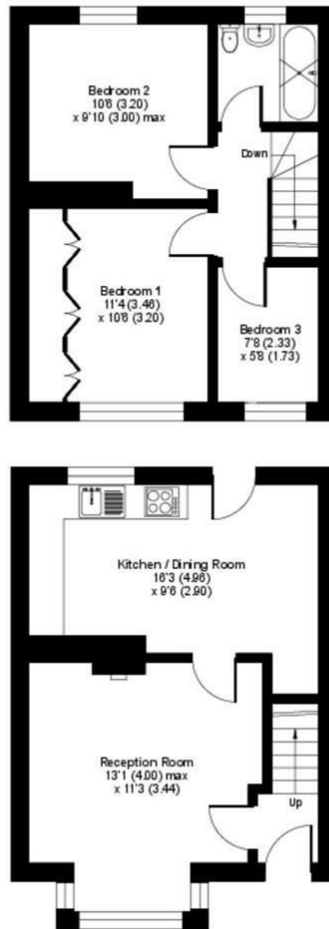
Modern suite comprising bath with shower over, wash hand basin and wc. In addition there is a heated towel rail, tiling and a window.

External

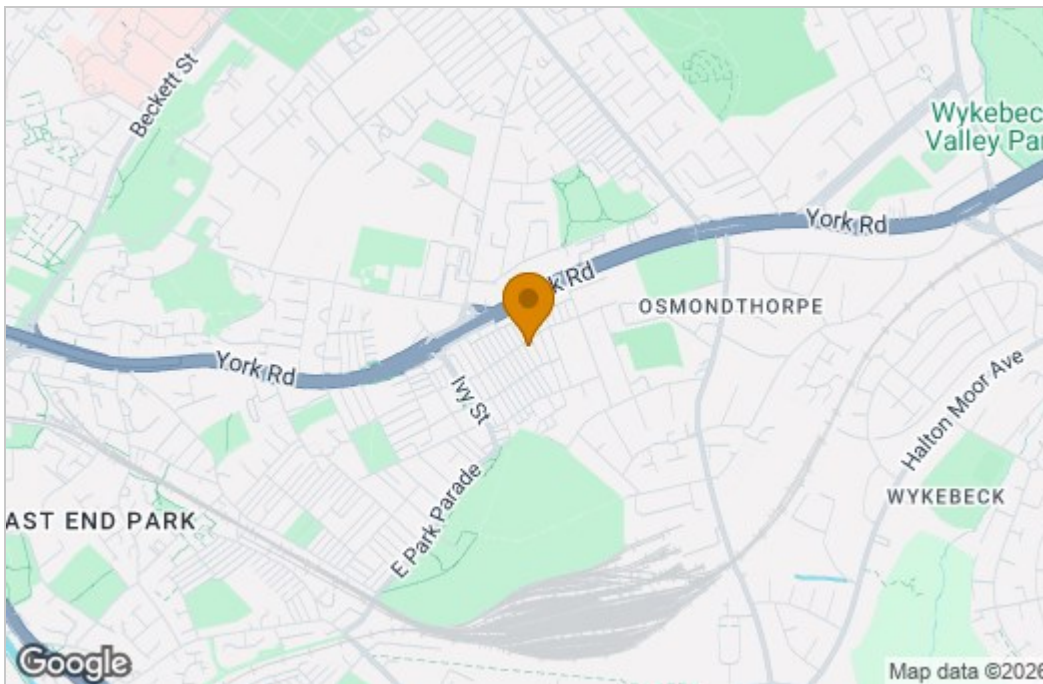


To the front is a garden with path leading to front door. To the rear is a spacious paved garden that is enclosed with a lockable gate.

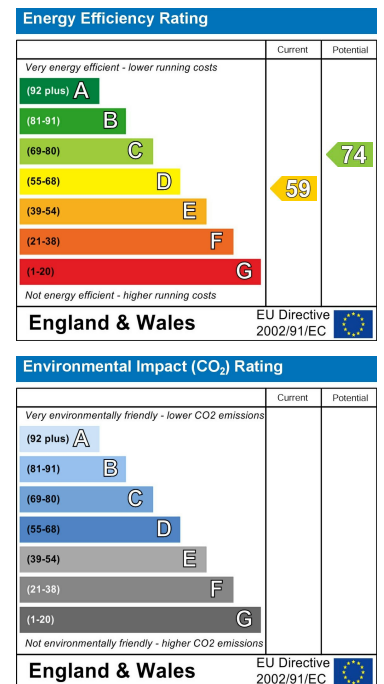
Floor Plan



Area Map



Energy Efficiency Graph



These particulars, whilst believed to be accurate are set out as a general outline only for guidance and do not constitute any part of an offer or contract. Intending purchasers should not rely on them as statements of representation of fact, but must satisfy themselves by inspection or otherwise as to their accuracy. No person in this firm's employment has the authority to make or give any representation or warranty in respect of the property.

