

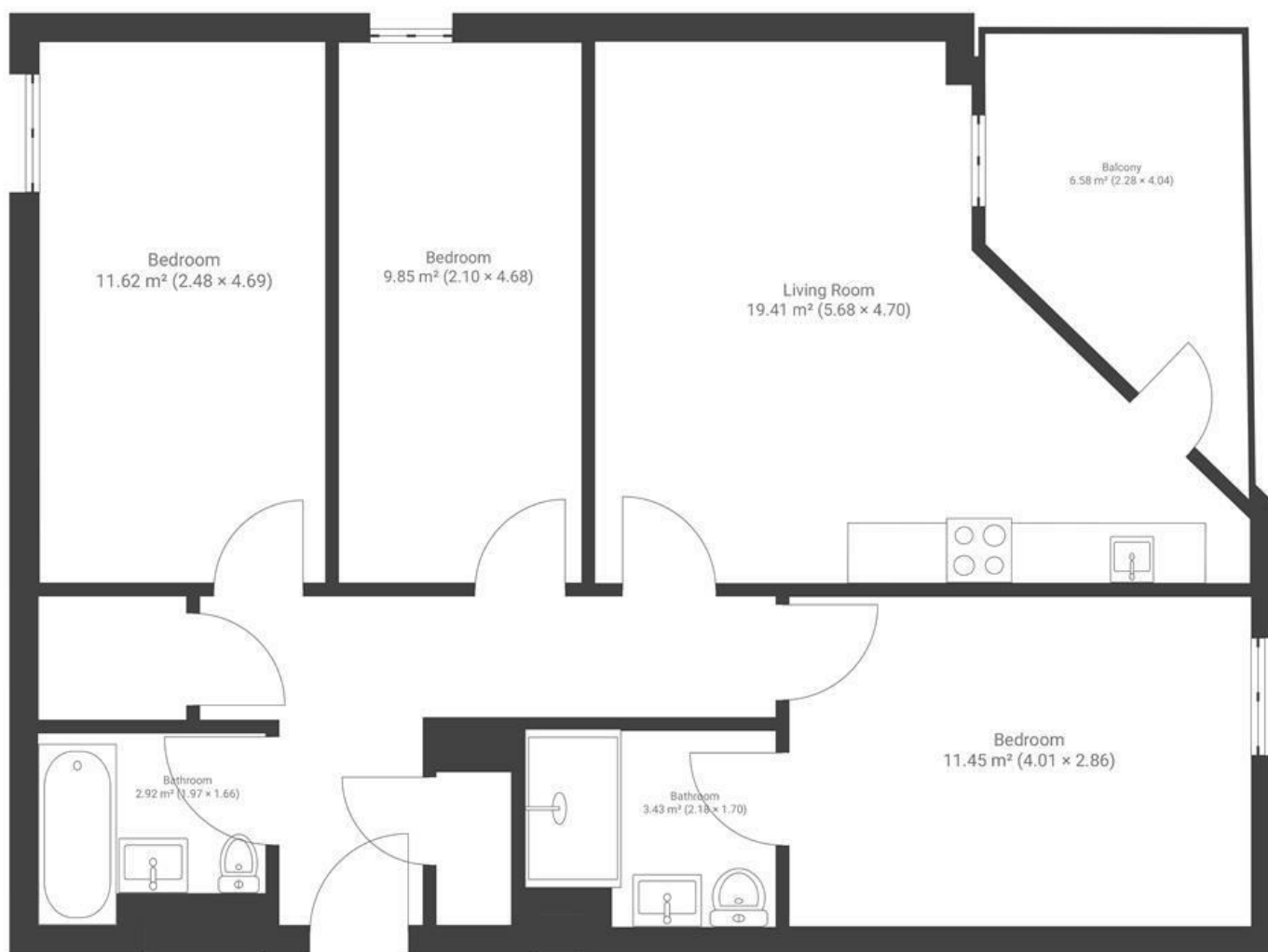
# Stillhouse Lane

## BEDMINSTER

APPROXIMATE FLOOR AREA  
72 SQM / 775 SQFT



GROUND FLOOR



**Boardwalk**

# Stillhouse Lane

BEDMINSTER, BRISTOL

£

£315,000



BS3 4EP

zzz

3 Bedrooms



2 Bathrooms

*"I chose this flat because of its fantastic location on a cobbled side street just off East Street in Bedminster. I also liked the fact it is within a small development of 10 flats making it a secure a quiet development. I was pleasantly surprised to find somewhere with such spacious bedrooms for a three bedroom property too."*

