



## Maclaren House, 7 Warwick Lane

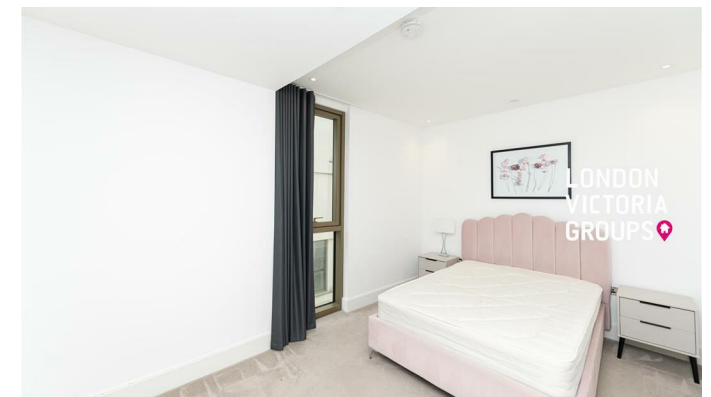
, London W14 8DR

- Two-bedroom, two-bathroom apartment
  - Secure entry system
  - Landscaped communal areas
- Ideally positioned in West Kensington
  - EPC-B
- Bright open-plan living and dining area
  - Lift access
  - Concierge
  - CTB-G

**£4,767 Per Month**



Local Authority **Kensington And Chelsea**  
Council Tax Band **G**  
EPC Rating **B**



**London Office Office**

Spaces Victoria, 25 Wilton Road, Pimlico,  
London, SW1V 1LW

**Contact**

020 3084 3094  
[XL@londonvictoriagroups.co.uk](mailto:XL@londonvictoriagroups.co.uk)  
[www.londonvictoriagroups.co.uk](http://www.londonvictoriagroups.co.uk)

Agents Note: Whilst every care has been taken to prepare these particulars, they are for guidance purposes only. All measurements are approximate and for general guidance purposes only and whilst every care has been taken to ensure accuracy, they should not be relied upon and potential buyers/tenants are advised to recheck the measurements.