

Buy. Sell. Rent. Let.



Cromwell Road, Grimsby



3



2



1

When it comes to  
property it must be

  
**lovelle**



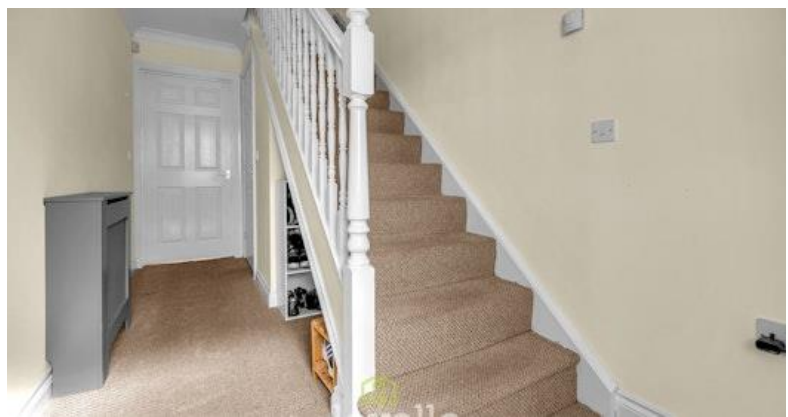
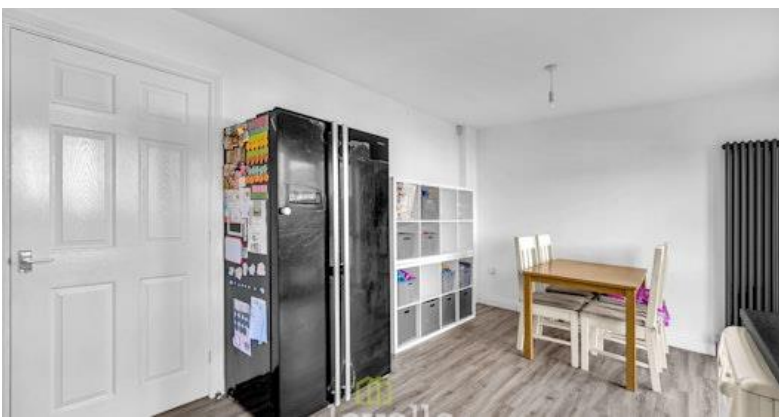
**£129,950**



An immaculate three-bedroom end-terrace house in Grimsby, ideal for first-time buyers and families, featuring a modern kitchen-diner, ensuite to the main bedroom, family bathroom, ground-floor cloakroom, parking, a pleasant rear garden, and convenient access to local amenities, schools, green spaces and transport links.

### Key Features

- End of terrace
- uPVC double glazed & GCH
- Three Bedrooms
- Two Bathrooms & Cloakroom
- Kitchen/Diner & Lounge
- Private Parking
- EPC rating TBC
- Tenure: Freehold





This three-bedroom end of terrace house is offered for sale in Grimsby and presents an immaculate interior suitable for first-time buyers and families.

The ground floor comprises a welcoming hallway leading to a lounge and a modern kitchen with units, oven and gas hob, plumbing for a washer, and dining space with doors opening to the rear garden. There is also a cloakroom with WC and sink on this level. Upstairs, the main double bedroom benefits from an ensuite with shower, sink and WC. A further double bedroom and a sizeable third bedroom are served by a family bathroom with bath and shower attachment, sink and WC.

The property features uPVC double glazing, gas central heating, parking, and a pleasant rear garden, providing outdoor space for relaxation and play.

Located in Grimsby, the house is well placed for local amenities, schools and green spaces. Nearby Peoples Park offers open space and walking routes, while Grimsby town centre provides supermarkets, shops and cafes. Grimsby Town railway station is within easy reach by bus or car, offering services to Cleethorpes in around 10 minutes and to Manchester via Doncaster, making regional travel straightforward. Bus routes along main roads in the area provide regular connections across the town and to the seafront at Cleethorpes.

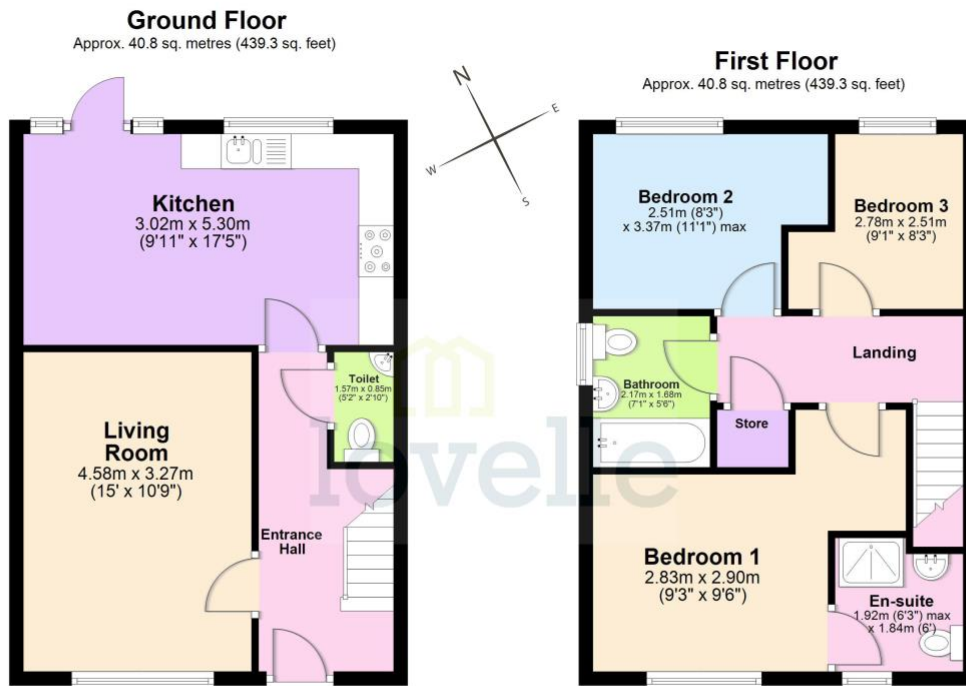
### Disclaimer

We endeavour to make our sales particulars accurate and reliable, however, they do not constitute or form part of an offer or any contract and none is to be relied upon as statements of representation or fact. Any services, systems and appliances listed in this specification have not been tested by us and no guarantee as to their operating ability or efficiency is given. All measurements have been taken as a guide to prospective buyers only, and are not precise. If you require clarification or further information on any points, please contact us, especially if you are travelling some distance to view.

## Mobile and broadband

It is advised that prospective purchasers visit [checker.ofcom.org.uk](http://checker.ofcom.org.uk) in order to review available wifi speeds and mobile connectivity at the property.





Total area: approx. 81.6 sq. metres (878.6 sq. feet)

The provided floor plan is intended for general informational purposes only and may not accurately represent the exact dimensions, layout, or features of the property. The floor plan should not be relied upon for making decisions about purchasing, renting, or modifying the property. Actual measurements and features may vary. It is recommended that interested parties conduct a physical inspection of the property to verify the accuracy of the floor plan and obtain specific information about the property's condition, amenities, and any other relevant details.  
Plan produced using PlanUp.

When it comes to **property**  
it must be

  
**lovelle**

01472 251918

grimsby@lovelle.co.uk