

Belvedere Road, SE1 £475,000

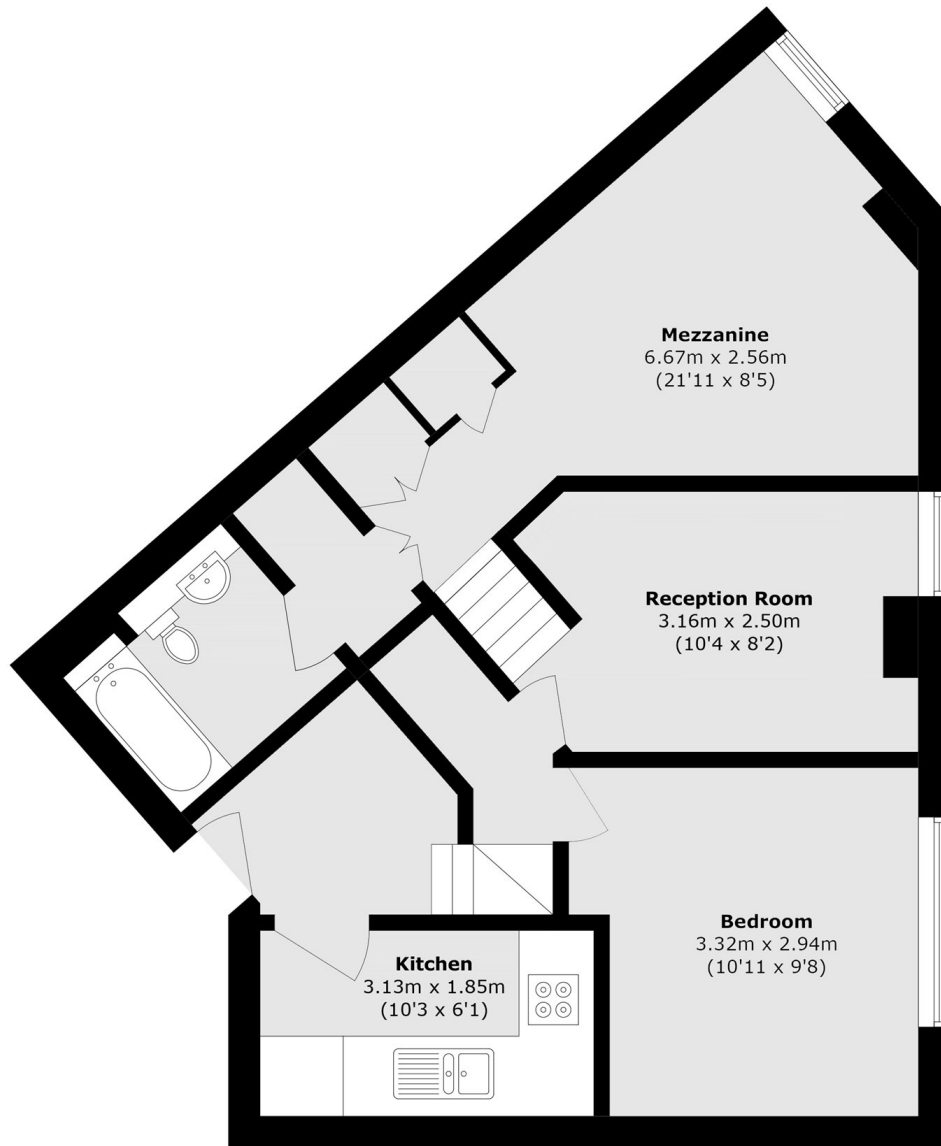
A highly attractive 600 sq ft one bedroom apartment with a very generous split level living space, with ample room for dining, a separate fully-fitted kitchen, a spacious double bedroom and ample built-in storage. Sold chain free, with access to a residents' gym, swimming pool, sauna and 24 hour concierge.

County Hall is one of Waterloo's most iconic developments, perfectly positioned on the vibrant South Bank. Residents are just moments from the London Eye, the River Thames, and Waterloo Station, with an abundance of cultural attractions, restaurants, and amenities on the doorstep.

Features

- Over 600 Sq Ft
- Split Level Living Space
- Separate Kitchen
- Residents' Gym
- 24 Hour Concierge
- Chain Free Sale

Belvedere Road,
London, SE1



Total area (approx.): 56.2 sq. m (604.9 sq. ft)