



WELMAR MEWS, SW4

£1,100,000

Superb mews house
Vaulted ceilings
Gated development
Roof terrace
Off street parking
Energy rating: c

@marshandparsons
marshandparsons.co.uk

MARSH &
PARSONS



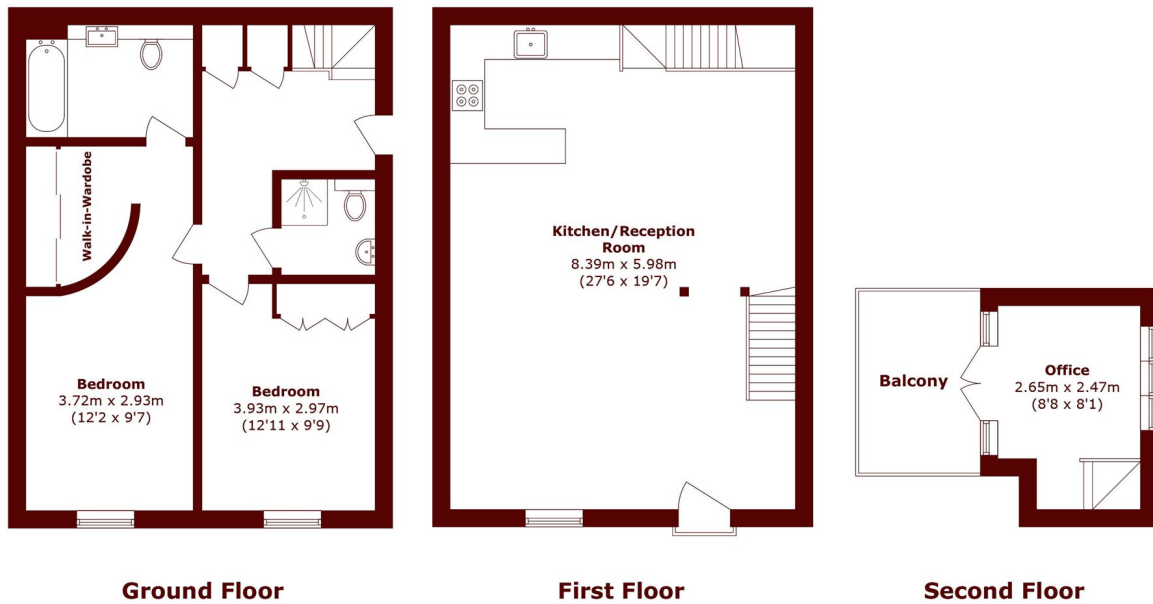
ABOUT THE PROPERTY

Stunning mews house set within a private gated development, offering 1,174 sq ft of well-designed living space, vaulted ceilings with an abundance of natural light, a private terrace, and the added benefit of off-street parking.

This superb property features an impressive open-plan reception room with polished wooden floors and high ceilings, as well as a luxurious principal bedroom suite with walk-in wardrobes and an en suite shower room. The property further benefits from a modern kitchen, two generous double bedrooms, a contemporary family



STEP INSIDE WELMAR MEWS



Ground Floor

First Floor

Second Floor

Total area (approx.): 109.1 sq. m (1174.3 sq. ft)
Balcony area (approx.): 6.6 sq. m (71.0 sq. ft)

Clapham
020 7501 3666

Energy Rating: C We aim to make our particulars both accurate and reliable. However, they are not guaranteed; nor do they form part of an offer or contract. If you require clarification on any points then please contact us, especially if you're traveling some distance to view. Please note that appliances and heating systems have not been tested and therefore no warranties can be given as to their good working order

**MARSH &
PARSONS**