

# No. 3, £1335pcm

RICHMOND  
VILLAGES

Part of Bupa



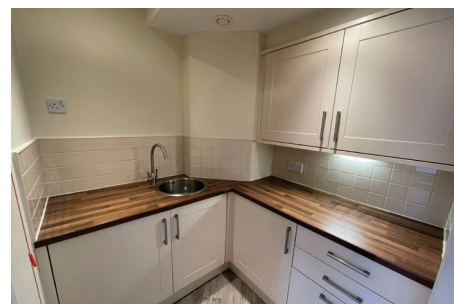
1



1



EPC - C



## 1 bedroom assisted living apartment

We are delighted to offer this well-presented one-bedroom Assisted Living Apartment for rent. The property is conveniently situated within easy access of our lovely on-site facilities including the restaurant, hair salon, beauty treatment room, bowling green and landscaped gardens.

### Specification

- The cosy living room is well proportioned with access to a private balcony and features double French doors, fireplace with attractive surround.
- Modern fitted kitchenette with range of wall and base units, stainless steel sink and drainer, ample work surfaces and built in fridge.
- Double bedroom with built-in wardrobe and access to modern en-suite shower room.
- En-suite shower room with shower, heated shower rail and storage space.
- TV and satellite points\*.
- Well stocked flower borders and lawns maintained by the Village Gardeners.
- Allocated parking space for one car.



\*Satellite subscription not included.

Important Notice: These particulars are intended to give a fair and substantially correct overall description. **Other fees and charges apply**, please contact the Village Advisers for further details. CGI images are used and are not representative of the property for rent.

01270 629080

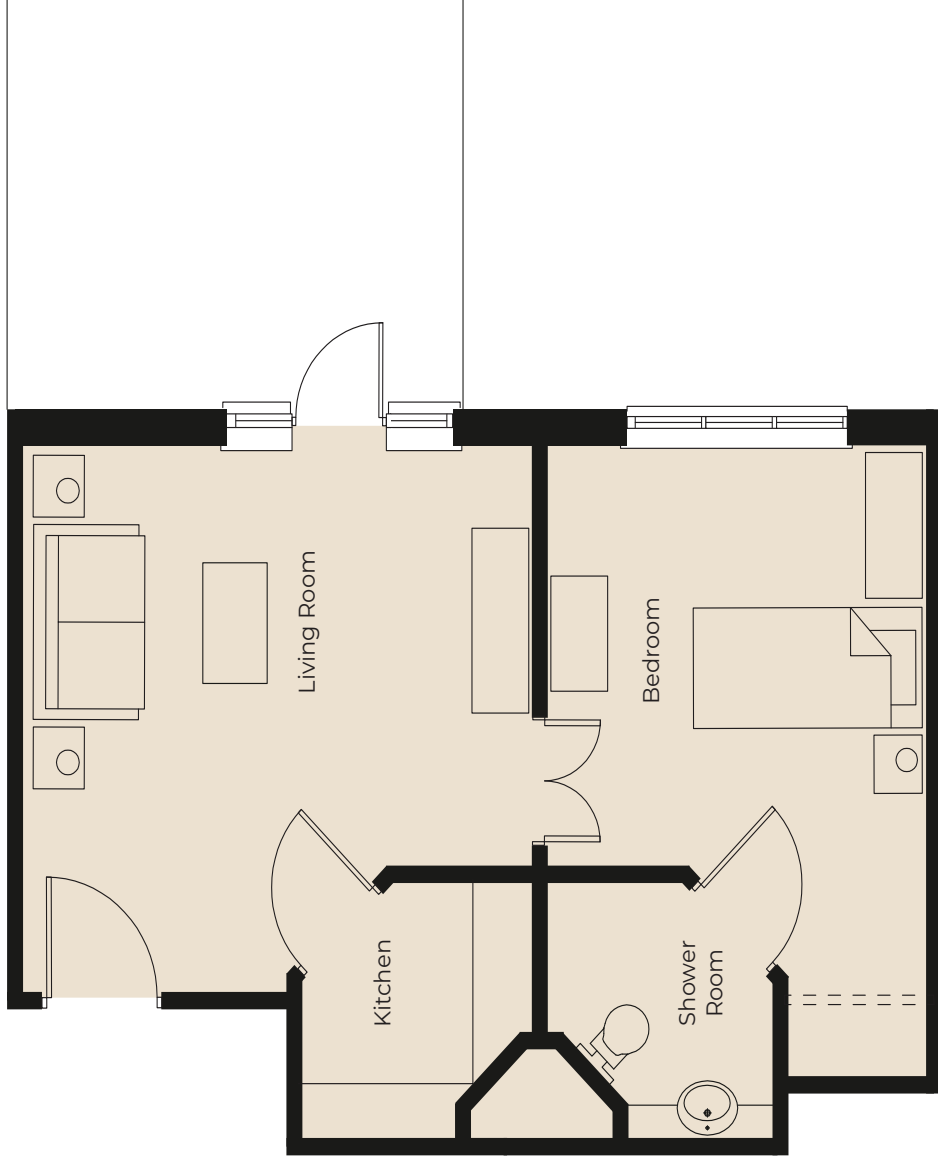
nantwich@richmond-villages.com

Richmond Villages Nantwich,  
St Joseph's Way, Nantwich, Cheshire CW5 6LZ

# No. 3

First Floor | 378ft<sup>2</sup>

- Kitchen**  
6'2" x 6'1"
- Living Room**  
13'5" x 13'1"
- Bedroom**  
14'9" x 10'2"
- Shower Room**  
6'2" x 6'1"



These particulars are intended to give a fair and substantially correct overall description. Measurements have been taken at 1500mm skirting height. All dimensions are approximate. Bedroom measurements include the wardrobe if applicable. Room measurements include bay windows if applicable. Furniture layout is to give an indicative impression. Although all efforts have been made to ensure its accuracy at time of print dimensions, fixtures, fittings, finishes and specifications are subject to change without notice. The properties are sold unfurnished.

