

Aldreds
Estate Agents



Rosedene Church Road, Catfield, NR29 5AS

£375,000



3



2



1



E



Rosedene Church Road

Catfield, NR29 5AS

- Comprehensively Improved & Extended
- Three Double Bedrooms
- Oil Central Heating
- Tucked Away Position
- Popular Broadland Village
- Detached Bungalow
- Master En Suite Shower
- Large Private Driveway & Garage
- Lovely Garden with Deck and Pergola
- Must be Viewed to be Appreciated!

Aldreds are pleased to offer this comprehensively refurbished and extended bungalow, located in a desirable tucked away position in the Broadland village of Catfield. This spacious detached home offers accommodation including an entrance hall, lounge/diner, kitchen/breakfast room, three double bedrooms, master en-suite shower room and a bathroom. The property benefits from modern, high quality fixtures and fittings throughout, and has been re-wired, and had a new central heating system installed by the current owners. Set well back from the road, via a long, private driveway leading to a large parking area and a detached single garage with a delightful enclosed, spacious rear garden. Early internal viewing is strongly recommended to appreciate this well appointed property which is offered with no onward chain.

£375,000



Entrance Hall

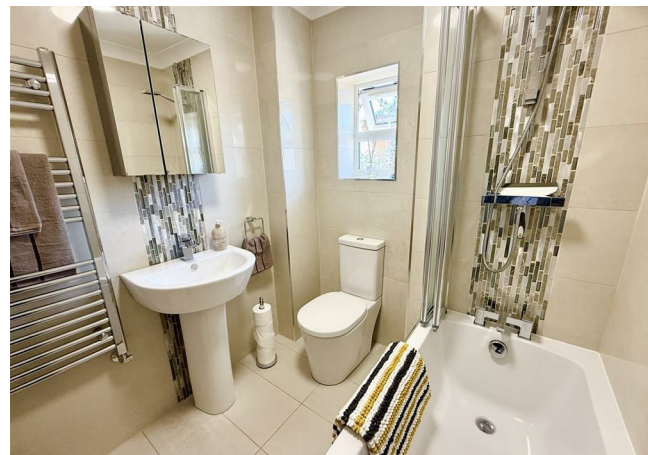
Part glazed solid wood entrance door, radiator, power points, two cupboards, mains smoke detector, doors leading off;

Kitchen Breakfast Room 12'0" x 11'11" at max (3.66m x 3.64m at max)

A spacious double aspect room, beautifully fitted out with a range of modern contemporary units with work surface and tiled splash back, stainless steel sink drainer with mixer tap, integrated breakfast bar, radiator, range cooker with a stainless steel and glass chimney extractor over, integrated fridge-freezer, washing machine and dishwasher, part glazed door giving access to side, LED ceiling inset lighting, telephone point.

Bathroom

Obscure glazed window to front aspect, fully tiled walls and floor, white suite comprising of panelled bath with rainfall shower over and shower screen, low level w.c., pedestal hand wash basin with mono bloc tap, heated towel rail, ventilation.





Lounge 16'7" x 14'7" (5.08m x 4.47m)

A spacious room overlooking the rear garden with glazed French doors with glazed side panels, radiator, power points, television point.

Master Bedroom 11'3" x 10'9" plus doorwell (3.43 x 3.28 plus doorwell)

Window to rear aspect, radiator, power points, built-in cupboard, door giving access to;

En-Suite Shower Room

With fully tiled walls and floor, double size shower cubicle with rainfall showerhead, LED inset ceiling lighting, ventilation, low level w.c., hand wash basin within a fitted vanity unit with mono bloc tap, heated towel rail.

Bedroom 2 11'10" x 10'11" (3.61 x 3.33)

Window to front aspect, radiator, power points, television point.

Bedroom 3 11'3" x 11'0" at max (3.43 x 3.35 at max)

Currently used as a second sitting room/office, glazed French doors to side, power points, telephone point, television point.

Directions

From Aldreds Stalham Office proceed towards Great Yarmouth along the A149. Turn right sign posted Catfield and Ludham and proceed into the village of Catfield bearing round to the right, take the right hand turn just before the Post Office into Church Road where the property can be found on the left hand side, accessed via the long shingle driveway.



Outside

The property sits well back from Church Road, accessed via a long private shingle driveway through a timber five bar gate to a large parking and turning area with additional gate to side and driveway leading on to a single garage. The property offers a delightful spacious rear garden, nicely enclosed with close board panel fencing to boundaries, mainly laid to lawn, timber summerhouse and a selection of well-stocked beds and borders. A particular feature of the garden is the recently installed, large timber deck and pergola by Dunster House - a wonderful space to sit and enjoy the garden. To the side of the property, there is a shingled area with a uPVC oil storage tank and an external oil fired combination boiler for hot water and central heating (approx three years old), small patio area. External lighting and water supply.

Garage 19'1" x 9'4" (5.84m x 2.87m)

Front facing up and over door, side service door, windows to side and rear, power points.

Tenure

Freehold.

Services

Mains water, electric and drainage.

Council Tax

North Norfolk District Council - Band: 'C'

Energy Performance Certificate (EPC)

EPC Rating: E - (A number of improvements and extension to the property have taken place, including replacement windows and central heating system since the last EPC assessment)

Location

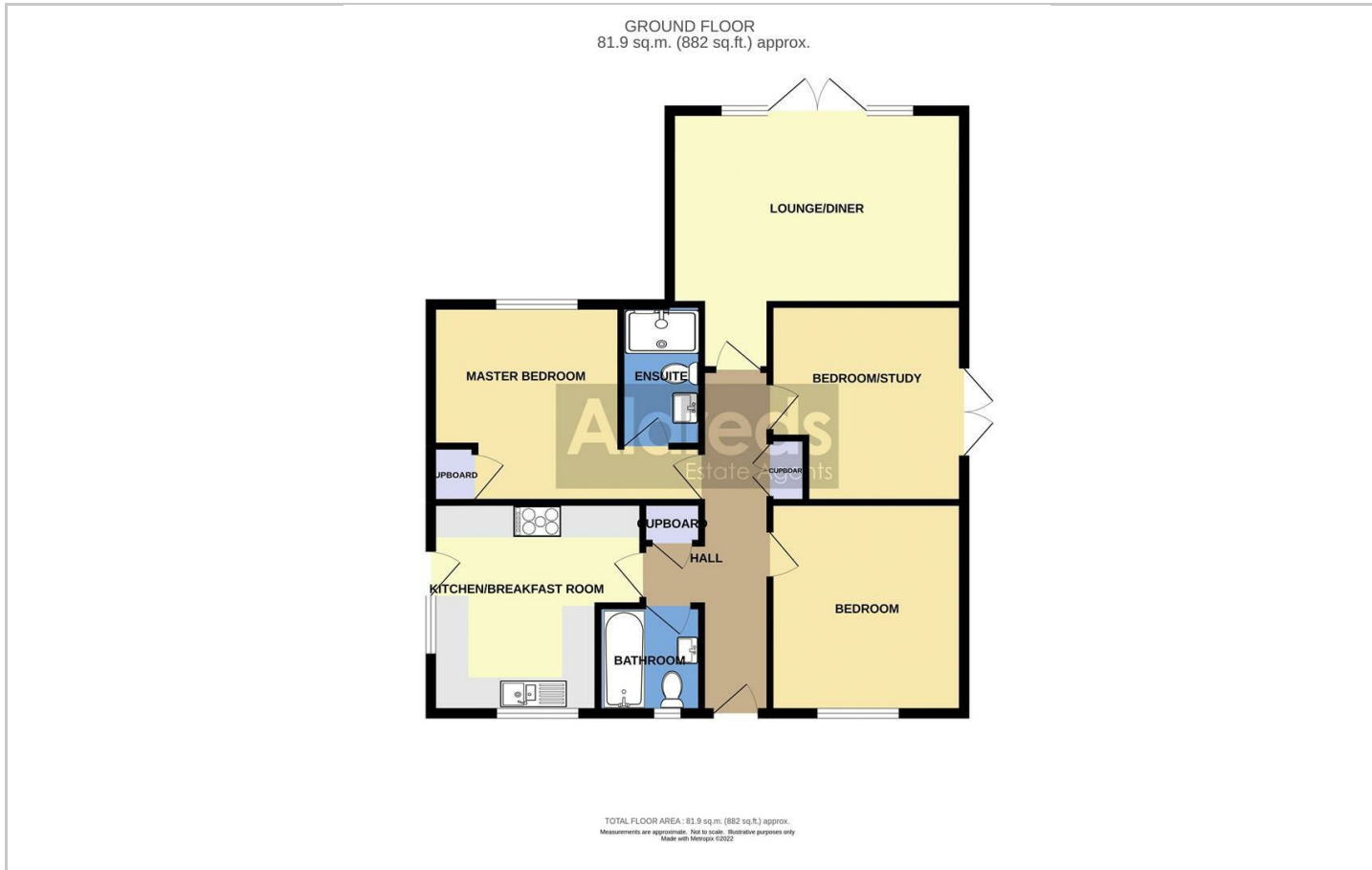
Catfield is a semi rural Broadland village with facilities including Post Office/Store, First School, Church, Bus Service and a Public House. The village lies conveniently between the Rivers Ant and Thurne. Catfield Staithe offers boating access to Hickling Broad and the River Thurne beyond. The nearby Broadland town of Stalham offers a full range of amenities and is approximately 3 miles distant, with Norwich and Great Yarmouth both approximately 14 miles.

Reference

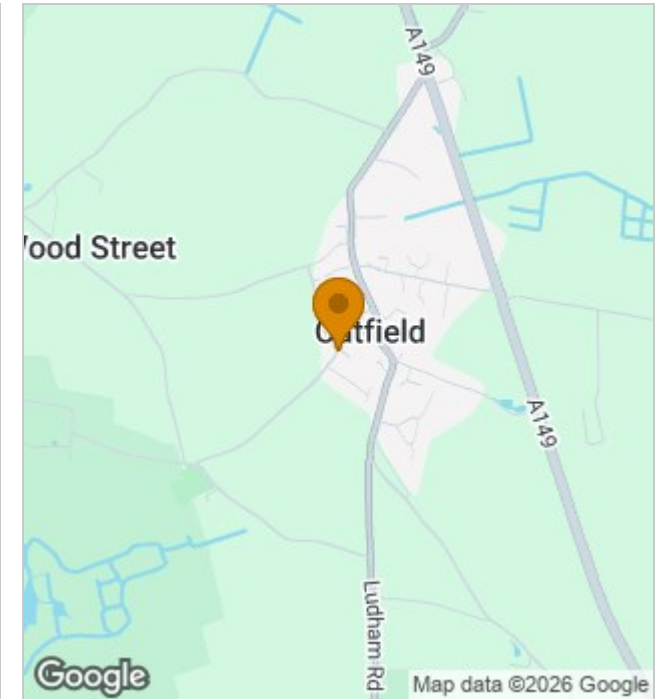
PJL/S9930



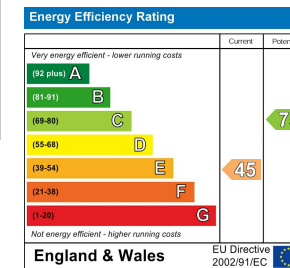
Floor Plans



Location Map



Energy Performance Graph



Viewing

Please contact our Aldreds Stalham Office on 01692 581089 if you wish to arrange a viewing appointment for this property or require further information.

Disclaimer

These particulars are issued on an understanding that all negotiations shall be conducted through Messrs. Aldreds. Please note: Messrs. Aldreds for themselves and for the vendors or lessors of this property whose agents they are given notice that: 1. Particulars are set out as a general outline only for guidance of intending purchasers or lessees, and do not constitute nor constitute part of, an offer or contract. 2. All descriptions, dimensions, references to condition and necessary permissions for use and occupation, and other details are given without responsibility and any intending purchasers or tenants should not rely on them as statements or representations of fact but must satisfy themselves by inspection or otherwise as to the correctness of each of them. 3. No person in the employment of Messrs. Aldreds has any authority to make or give any representation or warranty whatever in relation to this property. 4. If you are proposing to visit the property and are travelling some distance please check with Aldreds on the issue of availability prior to travelling. 5. Aldreds Property Consultants and associated services may offer additional services to the prospective purchaser for which they will be entitled to receive a commission. Aldreds are pleased to be working with Mortgage Advice Bureau. They're an award-winning mortgage broker with over 1,400 advisers across the UK, and have access to over 12,000 mortgage products from over 90 lenders. Aldreds Estate Agents Ltd receive a commission of £200 on each completed case. Your home may be repossessed if you do not keep up repayments on your mortgage. The actual amount you pay will depend upon your circumstances. The fee is up to 1%, but a typical fee is 0.3% of the amount borrowed. Mortgage Advice Bureau is a trading name of Mortgage Seeker Limited which is an appointed representative of Mortgage Advice Bureau Limited and Mortgage Advice Bureau (Derby) Limited which are authorised and regulated by the Financial Conduct Authority. Mortgage Seeker Limited Registered Office: Lovewell Blake, Sixty Six North Quay, Great Yarmouth, Norfolk, NR30 1HE. Registered in England Number: 03721415. 6. Potential purchasers should check with their providers that the broadband and mobile phone coverage they would require is available.

55 High Street, Stalham, Norfolk, NR12 9AH
Tel: 01692 581089 Email: stalham@aldreds.co.uk <https://www.aldreds.co.uk/>

Registered in England Reg. No. 08945751 Registered Office: 66 North Quay, Great Yarmouth, Norfolk NR30 1HE Directors: Mark Duffield B.S.c. FRICS, Dan Crawley MNAEA Paul Lambert MNAEA