



THE
PROPERTY
QUARTER



6 Grove House Cadwell Lane, Hitchin, SG4 0AH
£115,000



6 Grove House Cadwell Lane, Hitchin, SG4 0AH

£115,000

INVESTMENT OPPORTUNITY. The Property Quarter are pleased to offer this excellent investment opportunity in a popular location close to various shops, parks and other local amenities including Hitchin's mainline station for fast commuter service into Central London.

This light and spacious One Bedroom apartment is situated on the first floor of a small purpose built block with secure parking located at the rear.

The interior accommodation is in need of modernisation throughout but has the potential to become either an ideal home for a first time buyer or a fantastic rental investment.

Only Cash Buyers can apply as the lease term is currently at 63 years with an estimate cost of circa £25,000 to extend by a further 90 years.



Features

- One Bedroom
- First Floor
- In Need of Modernisation
- Off Street Parking.
- Popular location
- Excellent Investment Opportunity
- Low Lease / Cash Buyers Only
- Chain Free



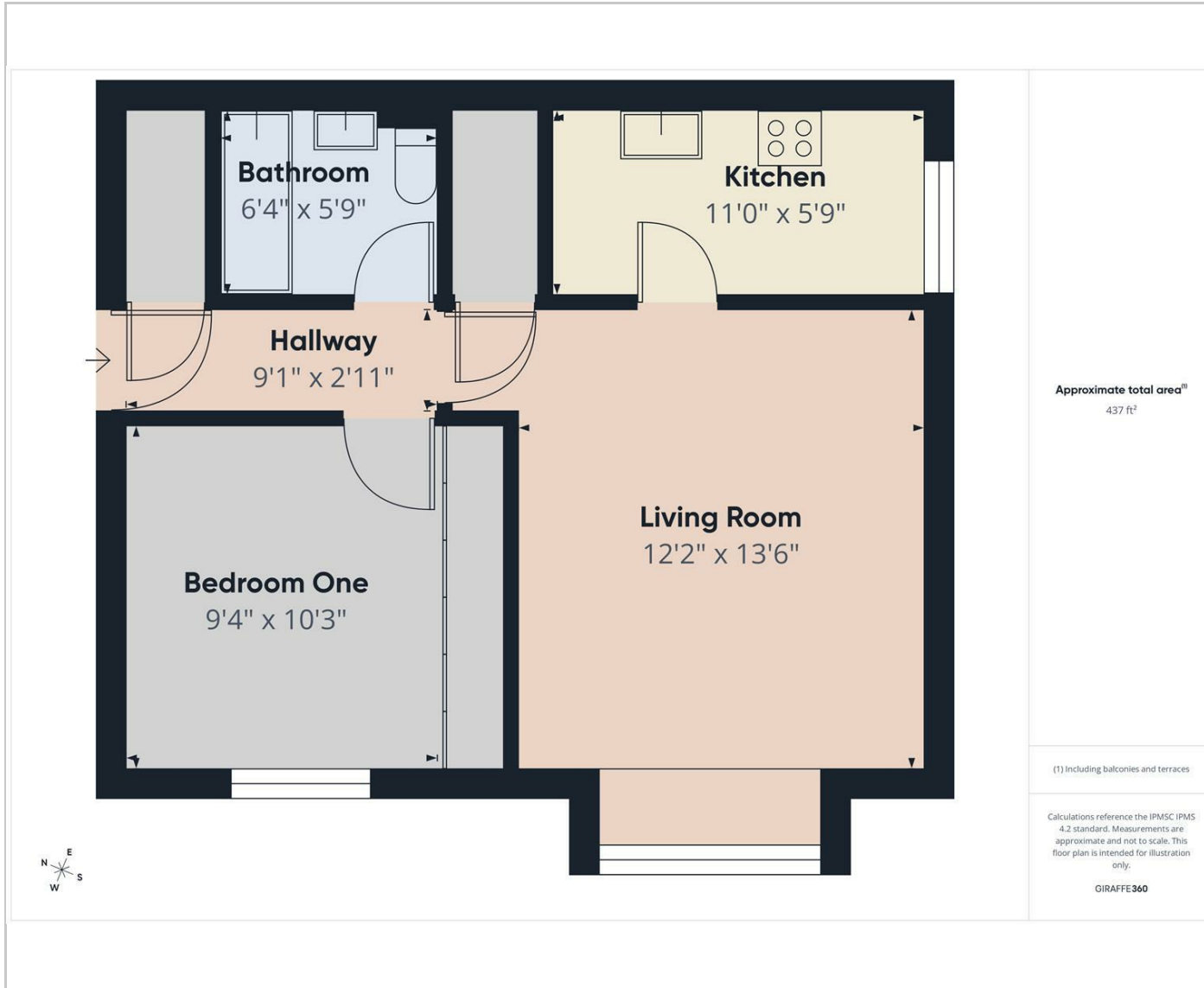
Council Tax Band: B

Floor Area: 473.62 sq ft

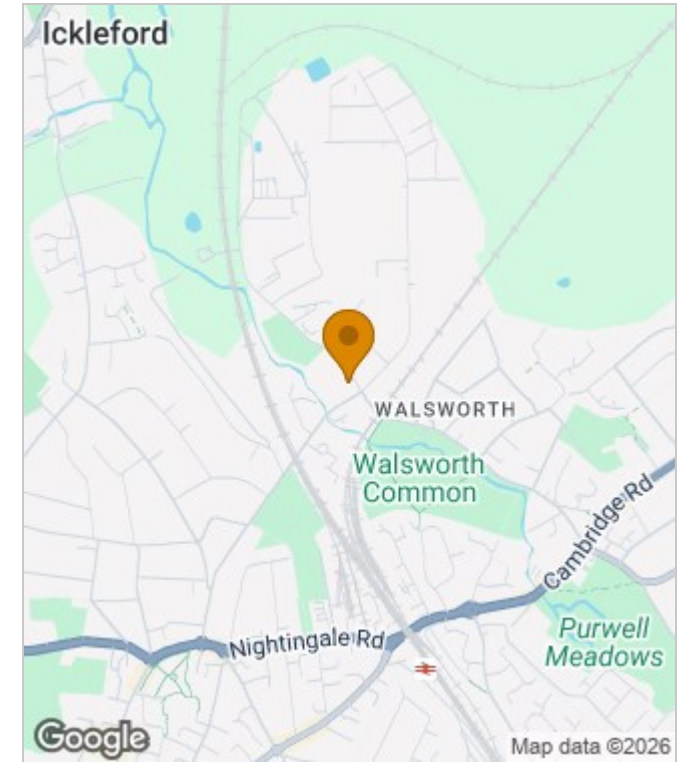
EPC Rating:

Tenure: Leasehold

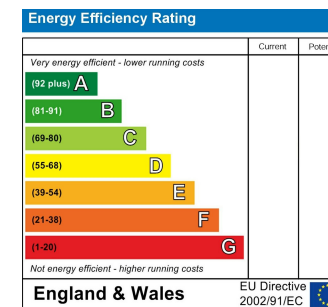
Floor Plans



Area Map



Energy Performance Graph



These particulars, whilst believed to be accurate are set out as a general outline only for guidance and do not constitute any part of an offer or contract. Intending purchasers should not rely on them as statements of representation of fact, but must satisfy themselves by inspection or otherwise as to their accuracy. No person in this firm's employment has the authority to make or give any representation or warranty in respect of the property.