

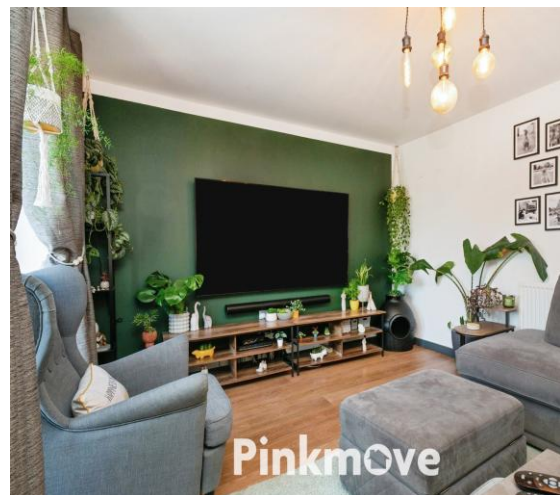


Pinkmove

Heol Senni

Guide Price £360,000 - £370,000

- Guide Price: £360,00 - £370,000
- Popular Fox Gloves development in Bettws
- Modern open-plan kitchen/dining & family area
- Large rear garden with pub-style entertaining space
- Driveway for three vehicles plus single garage
- EPC Rating: Awaited



4 2 2

Pinkmove

01633 746088
team@pinkmove.co.uk



Pinkmove

About the property

We are pleased to offer for sale this immaculately presented detached family home, located within the popular Fox Gloves development in Bettws. The property is ideally situated close to local amenities, well-regarded schools and excellent motorway links, making it perfect for commuters travelling to Cardiff, Bristol or Newport City Centre.

To the front is a well-maintained garden with mature plants, while a long side driveway provides off-road parking for up to three vehicles and access to the single garage, which benefits from an electric remote-controlled door and internal lighting.

Inside, a bright and spacious hallway gives access to all ground-floor rooms. There are two generous reception rooms to the front, both featuring bay windows and plenty of natural light. To the rear is a modern open-plan kitchen and dining/family area, fitted with gloss wall and floor units and offering ample space for both dining and seating. A utility room, downstairs WC and large cloakroom complete the ground floor.

The exceptionally sized rear garden provides a children's play area and an impressive pub-style entertaining space, ideal for social gatherings.

Upstairs, there are three double bedrooms, including a principal bedroom with en-suite, a further single bedroom, and a good-sized family bathroom.

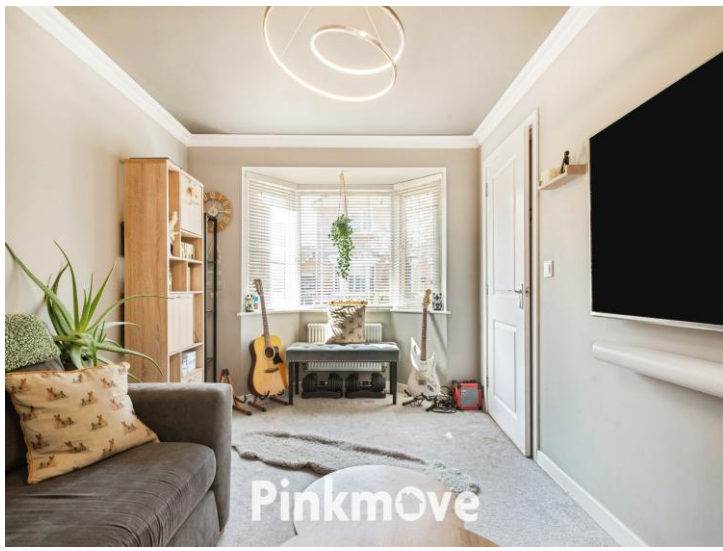
Viewing is highly recommended to fully appreciate the space, condition and location of this impressive home.



Pinkmove



Pinkmove



Accommodation

Lounge

Study

Living Room

Kitchen

Utility

Bedroom 1

En-Suite

Bedroom 2

Bedroom 3

Bedroom 4

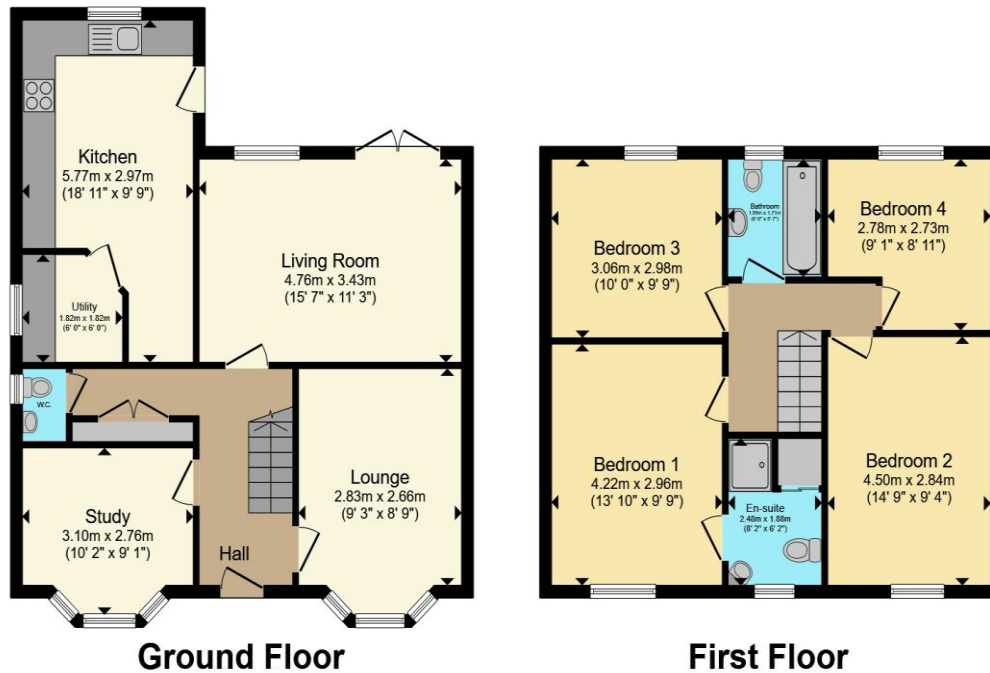
Bathroom

01633 746088

team@pinkmove.co.uk

Pinkmove

Floorplan



Ground Floor

First Floor

Total floor area 123.2 sq.m. (1,326 sq.ft.) approx

This floor plan is for illustrative purposes only. It is not drawn to scale. Any measurements, floor areas (including any total floor area), openings and orientation are approximate. No details are guaranteed, they cannot be relied upon for any purpose and they do not form part of any agreement. No liability is taken for any error, omission or misstatement. A party must rely upon its own inspection(s). Powered by www.localagent.com

Pinkmove

Important Information

Note while we endeavour to make our sales details accurate and reliable, if there is any point which is of particular interest to you, please contact the office and we will be pleased to confirm the position for you. We have not personally tested any apparatus, equipment, fixtures, fittings or services and cannot verify they are in working order or fit for their purposes. Nothing in these particulars is intended to indicate that carpets or curtains, furnishings or fittings, electrical goods (whether wired or not). Gas fires or light fittings or any other fixtures not expressly included form part of the property offered for sale. This computer generated Floorplan, if applicable, is intended as a general guide to the layout and design of the property. It is not to scale and should not be relied upon for dimensions. Tenure: We cannot confirm the tenure of the property as we have not had access to the legal documents. The buyer is advised to obtain verification from their solicitor or surveyor.

Peter Alan Limited is registered in England and Wales under company number 2073153, Registered Office is Cumbria House, 16-20 Hockliffe Street, Leighton Buzzard, Bedfordshire, LU7 1GN. VAT Registration Number is 500 2481 05. For activities relating to regulated mortgages and non-investment insurance contracts, Peter Alan Limited is an appointed representative of Connells Limited which is authorised and regulated by the Financial Conduct Authority. Connells Limited's Financial Services Register number is 302221. Most buy-to-let

