



**HENDERSON
CONNELLAN**
ESTATE AGENTS

St. Josephs Close, Kettering, NN15

“Making A House A Home”

3 1 1



"Making A House A Home"

This three-bedroom semi-detached home is in need of updating, creating the perfect opportunity to add your own stamp and call it your home, offered to the market with NO CHAIN. Situated in this desirable Cul De Sac on the very sought after Ise Village, shops, schools, bus routes, amenities and parklands walks are all within easy reach.

The interior includes entrance vestibule, living room, and Kitchen. There is a wet room and three good sized bedrooms, the principal room with built in wardrobes and airing cupboard. Outside there is parking for one car on a block paved driveway which leads to a tandem length garage, the fore garden is arranged with easy care in mind and the private rear south facing rear garden has a patio area, with good privacy from mature hedging and trees.

Living Room - 4.85m x 3.91m (15'11" x 12'10")

Kitchen - 3.05m x 2.79m (10'0" x 9'2")

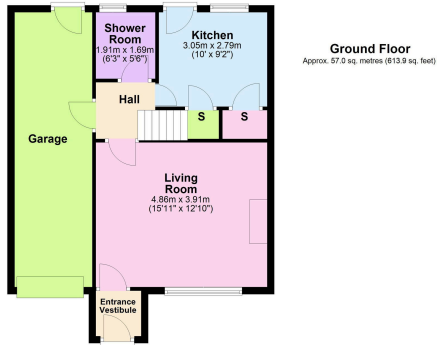
Shower Room

Bedroom 1 - 4.7m x 2.79m (15'5" x 9'2")

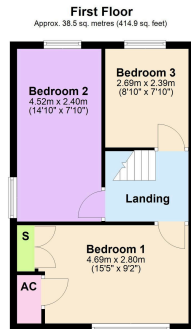
Bedroom 2 - 4.52m x 2.39m (14'10" x 7'10")

Bedroom 3 - 2.69m x 2.39m (8'10" x 7'10")





Total area: approx. 95.6 sq. metres (1028.8 sq. feet)



- NO CHAIN
- Semi Detached
- Three double Bedrooms
- Downstairs Wetroom
- Off road parking
- Over sized single garage
- South facing private garden
- Sought after location in the Ise Lodge
- EPC RATING: PENDING
- COUNCIL TAX: B



Disclaimer: These particulars do not form part of any offer or contract and should not be relied upon as statements or representations of fact. Any areas, measurements of distances are approximate. The text, photographs and plans are for guidance only and are not necessarily comprehensive.

15-16 Market Place, Kettering,
Northamptonshire, NN16 0AJ

